

YOU'RE HOME



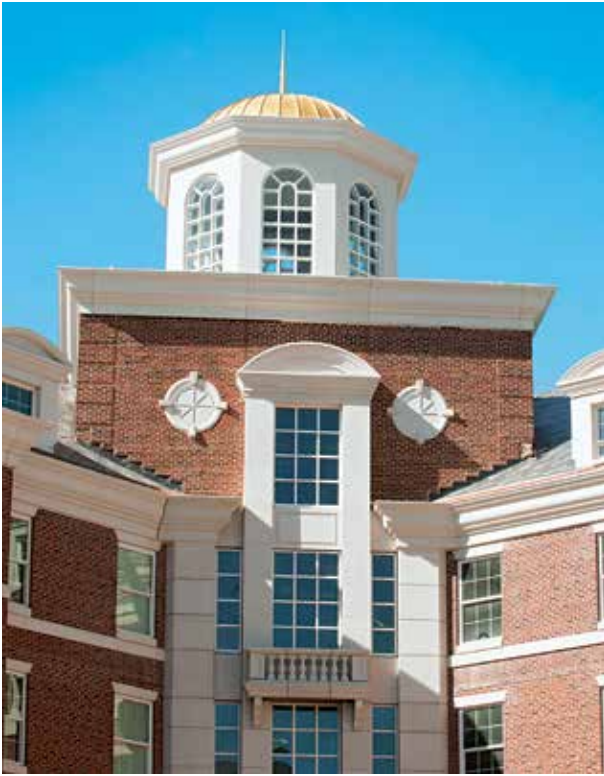
SMU | STUDENT
AFFAIRS

Residence Life & Student Housing

WELCOME TO SMU LIVING



At SMU, we've transformed residential life for students through our Residential Commons model, which integrates the academic, residential and social experience. Living in one of the 11 on-campus Residential Commons during your first two years at SMU, you'll find it's easier to make friends and transition smoothly to university life in a supportive environment. Living and interacting with students from across the United States and the world enriches you and prepares you to be a world changer in today's global society. Our Residential Commons thrive on the individual perspectives, skills and talents of every student resident.



Make the SMU Life Your Own

University life in your Residential Commons is centered on your personal growth and exploration, expanding your view of the world and your place in it. You'll be challenged by new experiences and learn more about yourself, others and the world around you.

The Residential Commons at SMU are more than just on-campus housing – they are a vital part of the University's academic mission. Each Commons fosters an academically focused community of students from every major and varied backgrounds, from all over the country and around the world. Living among such diverse neighbors is a learning experience in itself. From conversations with your Faculty in Residence (FiR) who lives down the hall to cultural activities and community service projects with your neighbors, living in a Commons will fuel your desire to learn. Your Commons will support your education with access to classrooms in or near your building along with the latest technological resources. And you can get advice or just chat with faculty and staff who live and work in your Commons. You'll also join the ranks of the next generation of world changers and leaders by serving on Commons Councils, volunteering and exploring other service opportunities in your Commons.

Learning Happens Everywhere

Your interactions and learning experiences outside class are an important part of the whole college experience. To this end, each Commons has a team of faculty and staff who work together to create a community with an academic focus and social opportunities. The team includes a live-in faculty member (called a Faculty in Residence or FiR), a Residential Community Director (RCD), as well as Resident Assistants (RAs) and Faculty Affiliates.

The Faculty in Residence is an SMU professor who lives in his or her Commons and serves as the intellectual leader in the community. FiRs help elevate the intellectual environment by hosting events and participating in impromptu discussions. A true member of the community, the FiR lives and works in his or her Commons. Faculty Affiliates support the FiR and residential life staff in shaping the academic atmosphere and attending events and activities.

The Residential Community Director is a full-time professional with a master's degree who is experienced in residence hall living and student life issues. Your RCD is responsible for the overall management of your Commons, including supervising the Resident Assistant staff, coordinating programs, supervising student conduct and advising the Commons Council.

Each residential community is staffed by Resident Assistants – usually one RA per floor. RAs are students who work to foster a sense of community. They are valuable resources for help in problem solving, conflict mediation and your transition to the University, or just to listen when you need to talk. They coordinate social and educational programs, facilitate Commons and campus involvement and assist with the overall management of your Commons.



"I've enjoyed helping create unique traditions in my Residential Commons and making it a community where everyone feels included."

Olivia Buerkle '17
Boaz Commons



"Students and faculty learn from one another - the grace of the dancer, the inventiveness of the engineer, the determination of the athlete, the language skills of the orator, the expressiveness of the poet. I want to be a part of that."

Rita Kirk, Faculty in Residence, Armstrong Commons

Director of the Cary M. Maguire Center for Ethics and Public Responsibility
Professor of Communication Studies
Meadows School of the Arts





"It is incredibly important that SMU students experience a young, powerful and positive family of color. For many students, creating positive relationships with an African-American man, a Mexican woman and two biracial children can be transformative."

Will Power, Faculty in Residence, Kathy Crow Commons
Artist-in-Residence, Theatre in Meadows School of the Arts

Home Base for Leadership

Each Residential Commons has a Commons Council to help coordinate activities for residents. Most Commons Councils have committees that work with the Faculty in Residence to help build a strong sense of belonging within the Residential Commons. By serving on a committee, you can help plan and enjoy a variety of group activities, such as the Residential Commons Olympics, Commons banquets and cultural events.

The Assembly of Residential Housing is the umbrella organization that represents all students living in SMU Residential Commons and upperclass residence halls. Through The Assembly, SMU seeks student input on decisions and issues important to campus life, including policy changes, facility improvements or other ways to enhance on-campus living.

Serving on your Commons Council and The Assembly is a great way to get involved and actively enhance the quality of your residential experience. Leadership in your Commons will help lay a foundation for involvement and leadership in other student activities and make a difference in your home away from home.

Shared Spaces

Sharing your living space with another student can teach you about yourself and others. In some cases you already may know your roommate, but in most cases you won't. "Roommate anxiety" is something we understand, and we'll work with you to get things off to a positive start – like completing a Roommate Agreement, which walks you through basic living issues you'll encounter and guides you to a common understanding of mutual expectations. Most rooming arrangements require a period of adjustment, and we find that, in time, friendships among roommates usually develop, and many of those friendships evolve into lifelong connections.







"The best part of living on campus is being at the heart of the school."

Olivia Varah '17
Morrison-McGinnis Commons



House Rules

SMU works collaboratively with students to create and maintain an atmosphere that promotes academic success, personal growth and social awareness. Safety and security are shared responsibilities among residents and the University. Strong communities require the participation and cooperation of every resident. As a member of your community, you assume responsibility for what you do. In the interest of all residents, rooms are inspected each term for fire safety and maintenance standards. To enhance security, our Residential Commons have electronic entry systems. You can access your building only by using your encoded SMU ID card at the electronic reader at the building's entrance. Residential policies require that guests be escorted by their hosts at all times. As a member of the residential community, you assume responsibility for what you do, including

showing courtesy to others and respect for property in SMU residential facilities. Our policies, given to all residents at check-in and available online, outline reasonable expectations for conduct. We trust that you will make choices that promote a strong community and uphold these standards. Those who do not will be held accountable for their actions and could be removed from on-campus housing.

The Home Stretch

SMU's Residential Commons create a meaningful community experience for students, with a particular focus on the first two years on campus. Upperclass students also remain linked to their Commons, no matter where they live, and can participate in academic programs, community service and social events. Thus, first-years and sophomores can benefit from the wisdom of their upperclass mentors. At SMU, the close-knit community you establish during your first two years on campus will enhance your entire college experience, regardless of whether you live on campus all four years.

Mutual Respect

The University welcomes a heterogeneous population – a variety of backgrounds, beliefs, nationalities and cultures. Roommates are not assigned or reassigned according to race, color, religion, national or ethnic origin, age, sexual orientation or disability.



"I'm with my peers all the time, and that creates this shared experience of what it means to be a Mustang."

Elliott Bouillion '16
Crum Commons



UNCOMMON EXPERIENCES



Residents of Ware Commons meet Richard Ware '68 during a pinning ceremony serving as their official welcome. Each Residential Commons not only has its own pinning ceremony, but also its own unique features – mottos, crests, special events and more.



Before Opening Convocation, first-year students process through the back doors of Dallas Hall, across the Rotunda and onto the Main Quad as new members of the SMU student body.



Residents gather with Paul B. Loyd, Jr. '68 at the Anita and Truman Arnold Dining Commons for a banquet inspired by the "High Table" tradition at Oxford, where faculty and students engage in intellectual exchanges over a formal dinner.



The competition and camaraderie of Residential Commons Olympics stir up an Olympic-size rivalry among competing Commons in games ranging from Bubble Soccer to Connect Four, Dodgeball and Human Battleship.

SPACE FOR LIVING

The Residential Commons, the center of residential life at SMU, offer an array of academic and social programs to enhance your undergraduate experience. SMU is committed to maintaining a diverse learning environment shaped by a convergence of ideas and cultures. Our residents are encouraged to embrace new experiences, and our Residential Commons promote exposure to a multitude of cultures, perspectives and personal values. No matter which Commons you live in, you are assured of a truly transformative experience that will broaden your horizons and enhance your view of the world around you.

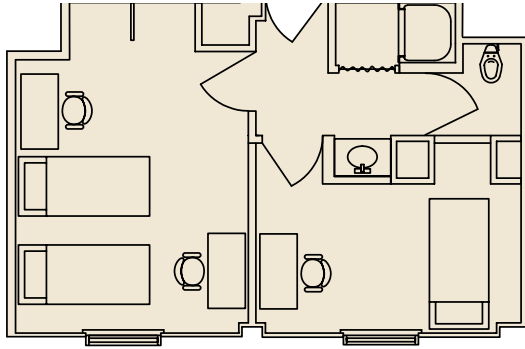
- All incoming first-year students are equally distributed among our 11 Residential Commons, making each Commons a smaller community that is a microcosm of the University.
- Although each Commons is architecturally distinctive, each room is furnished similarly – with a bed, desk, chair, dresser and closet space for each resident. Beds are extra-long, 80-inch twin-size.
- Bathrooms vary by building and typically are shared by four to eight students. Bathrooms in a community configuration are cleaned daily, and those in a suite configuration are cleaned weekly.
- Single rooms are available to first-year students on a space-available basis. Students should indicate preference for a single room when applying for housing.
- Area service desks are located in Armstrong Commons, McElvaney Commons and Virginia-Snider Commons. Area desks are resources for information, maintenance requests and lockouts.
- Dining plans are required of all students living in a Residential Commons.
- Dining centers located in Arnold Dining Commons and Umphrey Lee Center are open to all.

Features

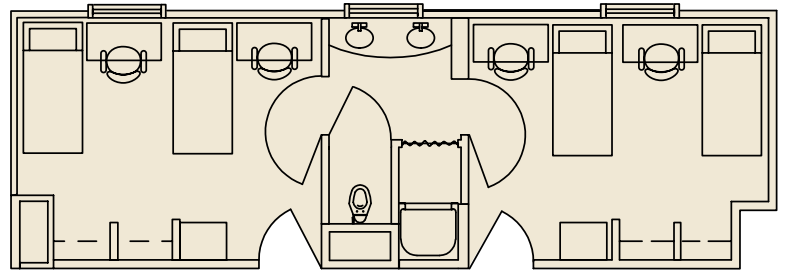
- Air conditioning
- Laundry facilities
- Community TV lounge
- Cable in student bedrooms
- Secure card-access entry at exterior doors
- Lounges, classrooms and common areas for study and socializing
- Carpeted corridors and rooms
- Microwaves in common areas, not in individual rooms
- Ethernet and wireless connections
- All residential facilities are smoke-free, as are all University buildings



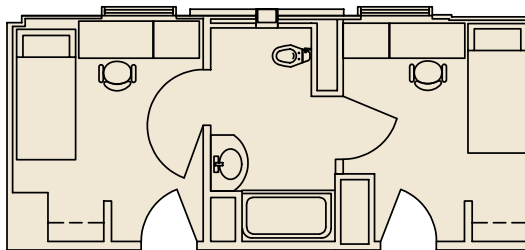
Take a peek at some sample floor plans.



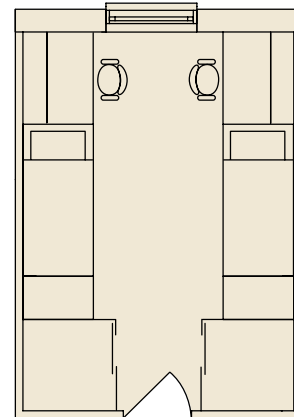
Double- and Single-Occupancy Rooms
with Bath
Square Footage: 185-250



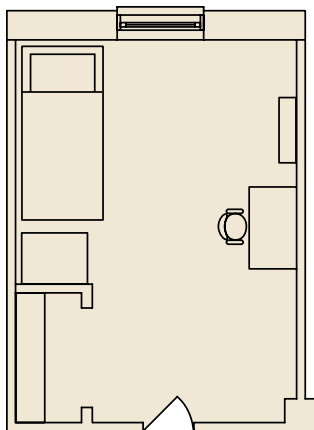
Double-Occupancy Rooms with Bath
Square Footage: 185-250



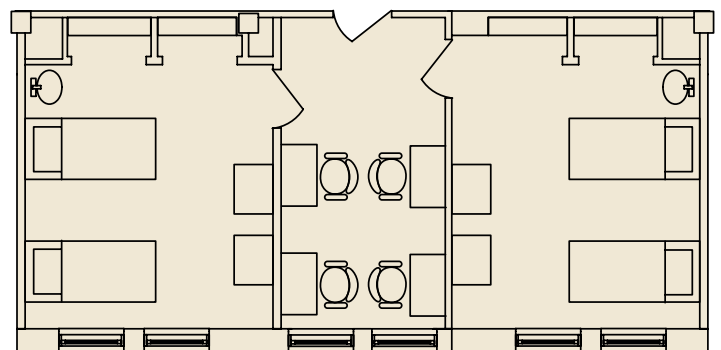
Single-Occupancy Rooms with Bath
Square Footage: 80-120



Double-Occupancy Room
Square Footage: 196-243



Single-Occupancy Room
Square Footage: 90-160



Double-Occupancy Rooms with Common Area
Square Footage: 182-193



"I am a regular guy with hobbies, aspirations and dreams - just like my students. By living among them, I witness the amazing drive, passion and dedication they bring to this campus. My understanding of my students' lives outside the classroom has made me a better teacher."

Mark Fontenot, Faculty in Residence, Loyd Commons
Lecturer and Undergraduate Advisor
Computer Science and Engineering
Lyle School of Engineering



DINING WITH STYLE

As part of the on-campus experience, all students living in a Residential Commons are required to have a dining plan membership. Memberships are designed to make your life easier and provide you with many convenient options. First- and second-year resident student dining plans provide seven-day, all-access dining in both Umphrey Lee Center and Arnold Dining Commons. Indicate your choice of dining membership when you apply for housing; your plan will be added to your student account.

Dining plans may be used in either Umphrey Lee (affectionately called “Umph”) or Arnold Dining Commons, regardless of where you live. With just a swipe of your SMU ID card, you will have access to the all-you-care-to-eat establishments. Whether you have a taste for international fare, fresh salads, brick oven pizza, freshly prepared pasta, made-to-order deli and omelet stations or sweet treats from our in-house bakery, SMU Dining offers it all. The flexibility, late-night options and opportunities to socialize with friends are just some of the reasons why SMU students love their dining memberships.

At SMU, we believe in making smart choices as part of an overall healthy lifestyle. SMU is at the forefront of empowering students to make healthy choices, including the free consultations made available with our Registered and Licensed Dietitian. SMU Dining’s award-winning “Healthy on the Hilltop” station features complete vegan and made-without-gluten meals to assist you in nourishing your body with the essentials for good health.

On the Menu

- Themed events include State Fair Night, Fry the Frogs BBQ, Feast of Thanks, Mediterranean Night and many more!
- Award-winning chefs prepare fresh meals every day.
- Dallas’ most popular food trucks visit campus every Tuesday and Thursday throughout the school year.
- Ranked in the “75 Best Colleges for Food in America for 2014”



In addition to traditional residential dining, all plans include an add-on Flex Dollars option. The discounts associated with Flex Dollars vary by add-on amount – the more you add, the more you save! Flex Dollars can be used at all on-campus retail dining locations, including popular eateries such as Chick-fil-A, Café 100 (We Proudly Brew Starbucks), Subway, Einstein Bros. Bagels, eS MUcho (Tex-Mex fare) and Sushic (freshly prepared sushi made right on campus!), as well as all on-campus convenience stores.

Flex Dollars carry over from fall to spring semester.



Make Yourself at Home

As soon as you are sure SMU is your choice, you will need to pay your Orientation, Housing and Matriculation deposit to the Office of Undergraduate Admission. The \$100 nonrefundable advance housing deposit is included in the University deposit. After your University deposit is processed, you will receive an email with instructions on how to complete the online Housing Application and Housing License Agreement. Be sure to enter all information as requested and read the Housing License Agreement when completing the housing application process.

Incoming first-year students are required to live on campus for their first two years at SMU and are guaranteed accommodation on campus. Although housing is guaranteed for the first two years, students must complete the housing application process after submitting the University deposit.

When applying for housing, you will indicate your roommate preferences and/or request a single-occupancy room, and complete the Housing License Agreement. If you're under 18 when applying for housing, you will complete the co-signer information for the License Agreement as well. If you have a request for a disability accommodation, be sure to include the information in your application and contact the Disability Accommodations office.

Living at home? Exceptions to the two-year residence requirement may be granted for Dallas-area students who will live at home with a parent or guardian in his or her primary residence. Requests for exceptions may be made by completing the Request to Live at Home form after paying the University deposit. Decisions are made by the dean of Residence Life & Student Housing.

Assignment Process

Assignment to the Residential Commons is made in late May and early June for students who pay their admission deposit by May 1. Assignments are made on a space-available basis, and specific Residential Commons may not be requested. You'll be notified of your Commons assignment in late June, prior to new student orientation.



Roommate requests must be completed in the online application by June 1 and must be mutual in order to be granted. You will need your roommate's SMU ID to make the request. Requests without an SMU ID cannot be processed. Specific roommate requests made after June 1 are not guaranteed.

Make Your Move

Ready to make your home at SMU? Reserve your place in the Class of 2019 at **smu.edu/deposit**. Then look for an email with instructions on how to complete the online housing application.

SMU Residence Life & Student Housing

smu.edu/housing

housing@smu.edu

214-768-2407

fax 214-768-4005

