



A Promise Neighborhood

Contributors

- Annie Wright, PhD
- Celeste Fernandez, PhD
- Jessica Miller-LaSalle, MSW
- Karen Medina, Jubilee Park

Mission

Jubilee Park's mission is to be a **catalyst for community revitalization in Southeast Dallas.**



Jubilee's Education Programs

- Served **329** K-12 students in 2024
- Afterschool and Summer programming** provided at no cost to families
- Afterschool programs at **three sites**: OM Roberts Elementary, Mount Auburn Elementary, and Jubilee's Community Center
- Head Start Programs** on Jubilee's campus serve 200 students per year
- Wraparound services** such as a food pantry, rental/mortgage assistance, health clinic, youth sports, adult education classes and more **provide multi-generational support to students and their families**
- Strong Partnerships** with Head Start, Dallas ISD, Parkland Health, Dallas Police Department, and others enhance Jubilee's reach

Major Educational Disparities Begin Early On

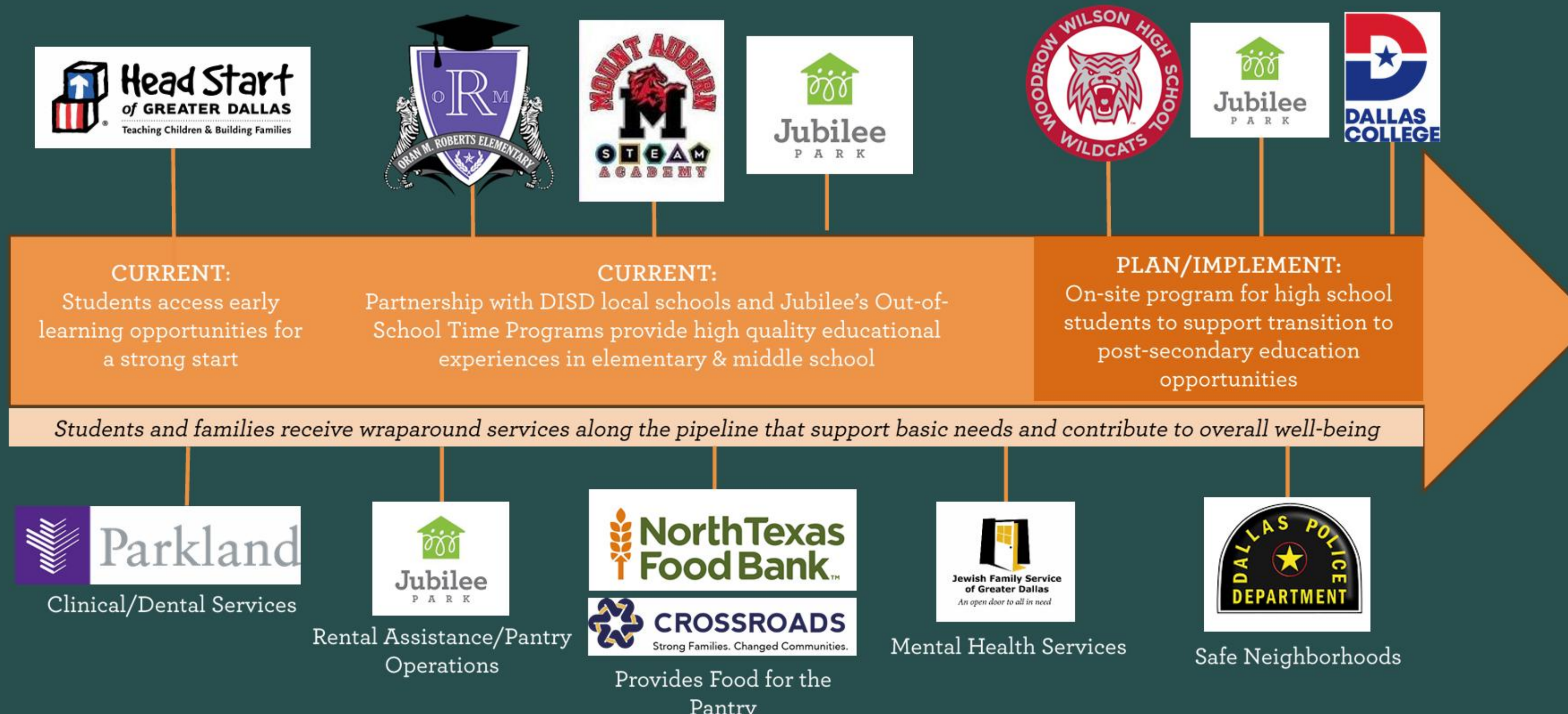
- In Jubilee's feeder pattern, one of Dallas ISD's top-performing elementary schools is only a few miles from one of its lowest-performing, **creating vastly different outcomes** for students by the time they get to high school.
- There are **notable differences** in outcomes for Jubilee students and comparison schools in areas such as Kindergarten Readiness, Math and Reading STAAR scores and mobility rates (CORE, 2025).
- Many of these factors are driven by socioeconomic inequities which Jubilee addresses through wraparound programming: Parkland Center for Clinical Innovation (PCCI) found that Jubilee's census tract is in the **99th most vulnerable** when it comes to 29 social determinants of health (Community Vulnerability Index, 2025).



The Promise Neighborhood Grant

- Awarded in December 2024 by the US Department of Education**
- One of the first awarded in Texas in over a decade
- Funds will be used to support existing out-of-school time programming and to build out programming for Woodrow Wilson High School students that live in the Jubilee Park neighborhood
- The program will be co-designed by partners to enhance post-secondary outcomes
- Jubilee will report on 10 population "GPR" (Government Performance Results Act) indicators—more than half of these will utilize academic data provided by CORE

Strengthening the Cradle-to-Career-Pipeline



Strengthening the Pipeline for Post-Secondary Success

- Jubilee Park sees differences in student post-secondary outcomes: while Jubilee residents **attend college at about the same rate** as their Dallas County peers, **they are much less likely to graduate with a four-year degree** (6% of residents have a bachelor's degree versus 24% of Dallas County residents) (ESRI, 2025).
- Only 5%** of P-TECH graduates at WWHS in the last two years were from the Jubilee Park neighborhood (Dallas College, 2025).
- Only 1%** of 2023 graduates at WWHS were enrolled in Dual Credit classes compared to the district (**27%**) (CORE, 2025).

Data-Driven Results

What Makes a Difference for Students?

Jubilee Park will **focus on supporting academic outcomes for neighborhood students** across the pipeline. In partnership with CORE, Jubilee will report on data across educational milestones and contexts:

- Kindergarten Readiness
- Academic Proficiency in core subjects (3rd-8th grade)
- Attendance rates (6th-9th)
- 4-year graduation rates
- Graduates that obtain a postsecondary degree or credential
- Student perceptions of school safety

