

Exploratory Evaluation of EAGLE Scholars' Outcomes Over Time

Authors

Timothy Lindsey, MPP
 Storm Simonin, candidate for MS in Counseling
 Annie Wright, Ph.D.
 Janet Morrison-Lane, Ed.D, VMYDF Exec. Director

Introduction

The Vickery Meadows Youth Development Foundation (VMYDF) partnered with CORE to conduct an exploratory evaluation of VMYDF's EAGLE Scholars (VMES) program, a to-and-through 4-year college access program. The focus of this mixed-methods evaluation is EAGLE Scholars' post-secondary education (PSE) enrollment and attainment as well as Scholars' program and PSE experiences.

Objective

The purpose of this evaluation was three-fold:

- CORE **verified impact** of VMES' intervention
- Sought to **understand and explain** motivations for staying in/deviating from the program pathway
- And worked to **support and improve** VMYDF's practices to better support Scholars, the organization, and the Vickery Meadows community

Methodology

Quantitative:

- Descriptive analysis: identify and describe PSE enrollment trends
- Comparative analysis: explore PSE enrollment differences between EAGLE Scholars and comparable DISD students

Qualitative:

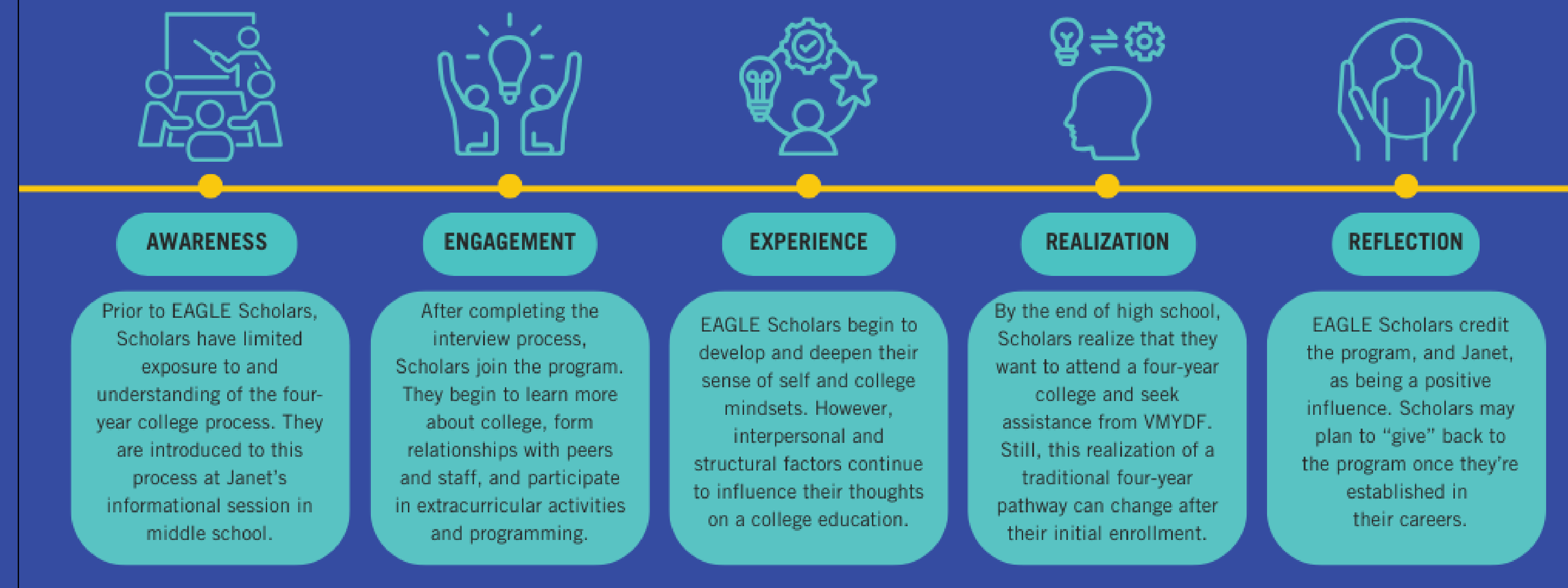
- ≤1-hour interviews
- Coded findings based on EAGLE Scholars' program and PSE experiences

The EAGLE Scholar Journey, n=4

UNDERSTAND AND EXPLAIN - QUESTION 2A

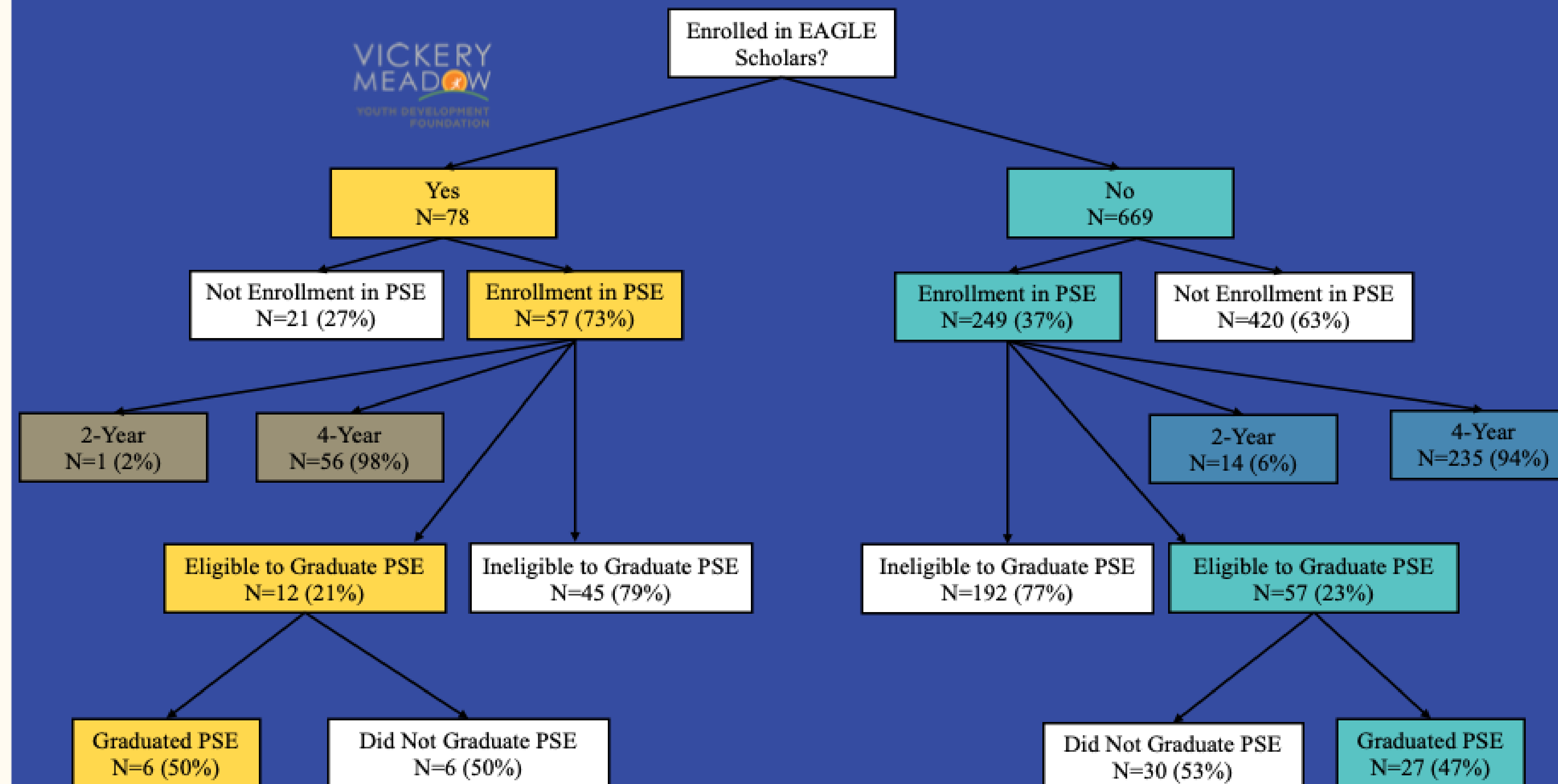
The EAGLE Scholar Journey

The EAGLE Scholar journey is the process through which Scholars becomes aware of, engages with, and interacts with the EAGLE Scholars program at the Vickery Meadows Youth Development Foundation (VMYDF). The journey can vary for each Scholar based on varying interpersonal and structural barriers. EAGLE Scholars and VMYDF strive to provide a positive and seamless experience at each step to help Scholars have a positive postsecondary trajectory.



In a comparative analysis of Scholars and non-Scholars, **73% of EAGLE Scholars (n=78)** enrolled in a PSE program in the fall following their high school graduation!

Comp. of PSE Outcomes, n=78 and n=669



Results

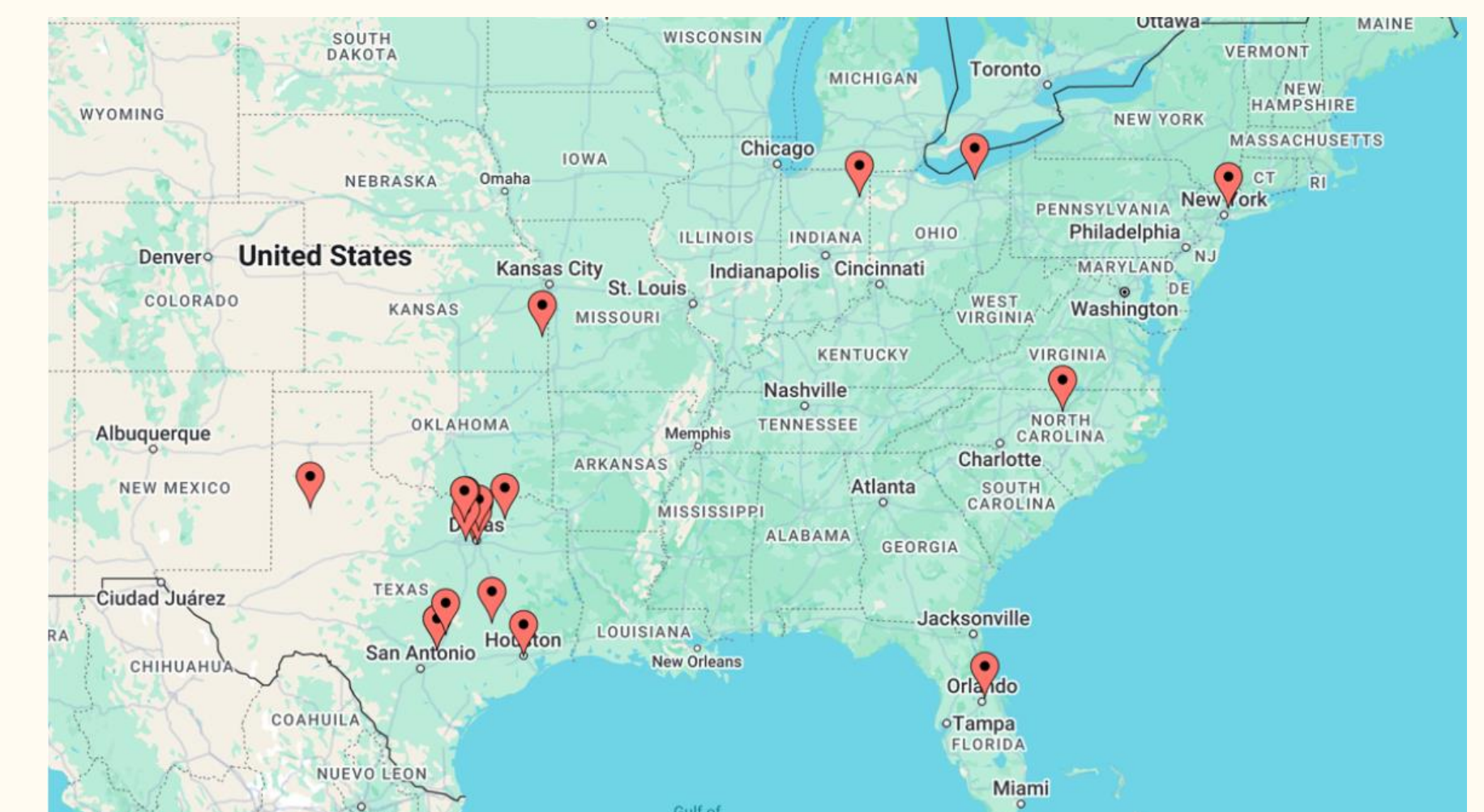
EAGLE Scholars are enrolling in PSE at a higher rate than non-Scholars. Most Scholars are choosing to enroll in a four-year program. However, both Scholars and non-Scholars are graduating from college at around the same rate.

Key Findings about EAGLE Scholars Sample:

- n=72 (73%) of Scholars out of n=103 enrolled in any PSE
- Of the n=72 Scholars enrolled in PSE, a total of n=25 (35%) are eligible to graduate
- Of the n=25, n=17 graduated PSE, indicating a 68% graduation rate within the program

Discussion

- EAGLE Scholars are enrolling in PSE settings at a much higher rate than non-Scholars (73% compared to 37%) but are graduating at approximately the same rate (~50%)
- The VMES program is succeeding in assisting Scholars get to college, but continued measurement, programming, and support is likely warranted to get Scholars through college



(n=22) institutions attended by EAGLE Scholars

