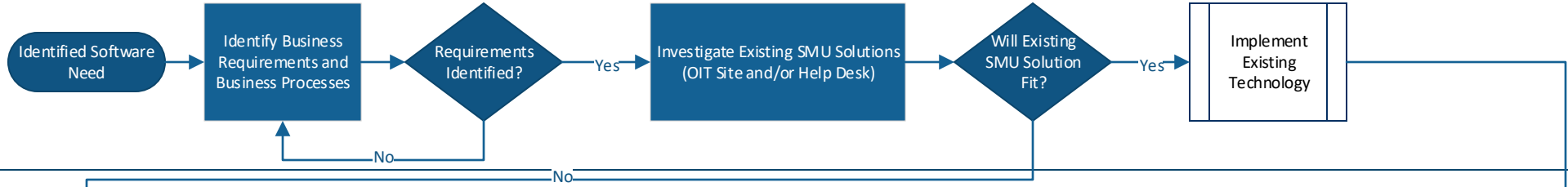
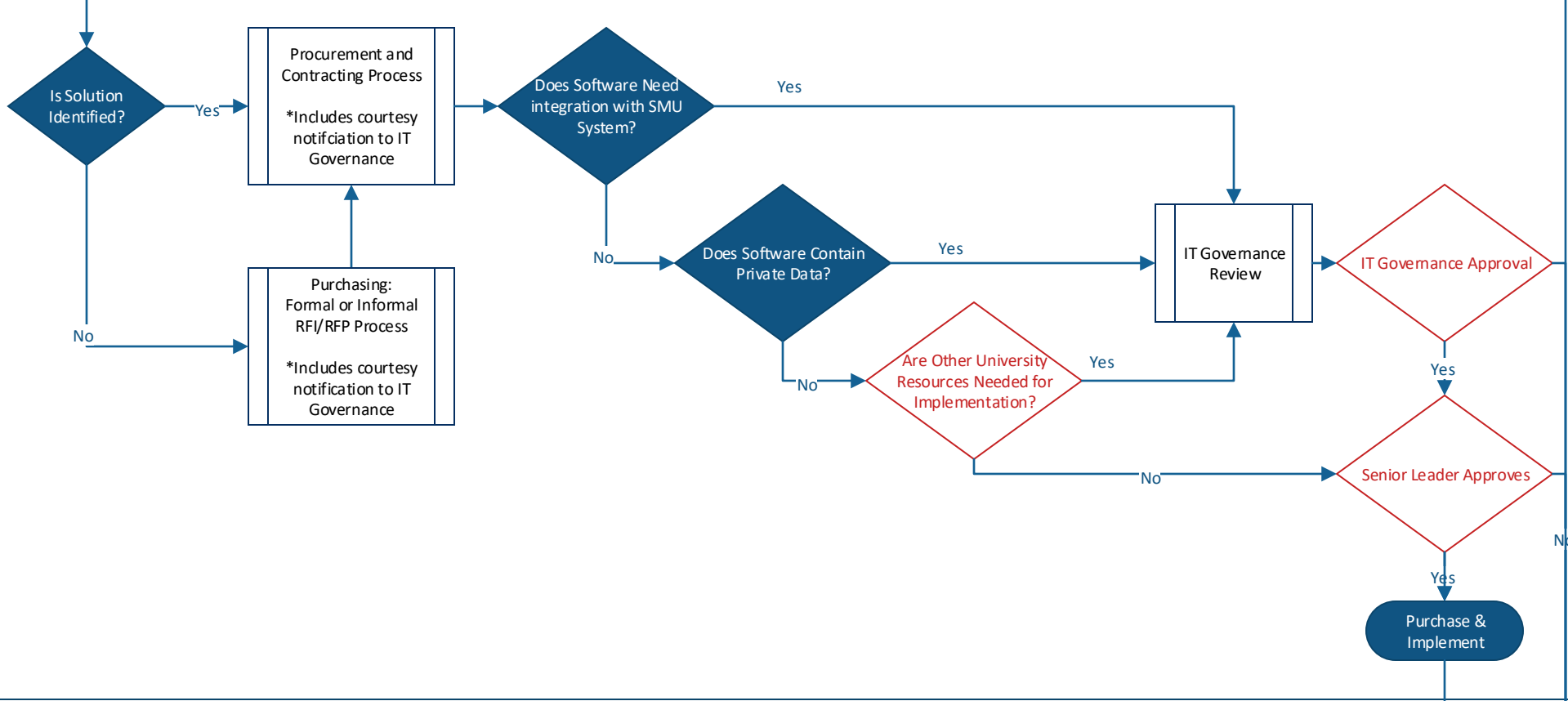


Investigation



Solution Identification



Guidance

- | | | |
|--|---|---|
| <p>Does Software Need Integration with SMU System?</p> <ul style="list-style-type: none"> • Authentication (e.g. Single Sign on or Other). • Data from Other SMU Systems (e.g. my.SMU.) • Data Import. | <p>Does Software Contain Restricted Data?</p> <p>Refer to the Data Governance Policy.</p> <p>Does the system use sensitive or protected data? Examples include SSN, SMU ID, Credit Card, FERPA, HIPAA.</p> | <p>Are Other University Resources Needed for Implementation</p> <ul style="list-style-type: none"> • Who is needed from unit to implement? • Who will operate the system? • Are other resources needed to Implement? • Are OIT resources needed? • Consider Training. |
|--|---|---|

