

# THE INTERNATIONAL STUDENT HANDBOOK

Southern Methodist University | 2025-2026



## LETTER FROM THE EXECUTIVE DIRECTOR



On behalf of the International Office team, I would like to welcome you to Southern Methodist University. You have chosen to attend one of America's premier comprehensive universities, and we are pleased that you are part of the SMU family.

The SMU campus and community provide a variety of resources to ensure that your time here as a student, scholar, or faculty is productive on both a personal and academic level. The International Office team is committed to facilitating and enriching your experience both before you arrive on campus and while you are here in the United States.

All members of the International Office team work diligently to provide the best and most useful resources prior to your arrival through a comprehensive pre-arrival information packet designed to assist with the visa application process. Once you arrive on campus, we welcome you through various immigration orientations to inform you of the visa compliance regulations you must follow in order to maintain your status as an international student and scholar.

Our team is responsible for reporting all compliance-related events concerning our international population to the federal government. For this reason, it is important that you check your SMU email daily, as regulations may change.

Upon arrival, we encourage you to take advantage of every opportunity to participate in our programming and events. Our office coordinates several events throughout the year to celebrate the diverse cultures and contributions of our international community. Our staff consists of dedicated professionals who are prepared to respond to your unique needs through our comprehensive immigration advising system. We are also here to help you navigate the many resources SMU offers to support your academic success and your research goals.

Once again, welcome to SMU. We are happy that you are with us. Please contact any member of the International Office team if you have questions or concerns. If we do not know the answer to your questions, we will do our best to find someone who does. We are eager to contribute to your success.

Go Mustangs!

Dr. Claudia Sotomayor Hart

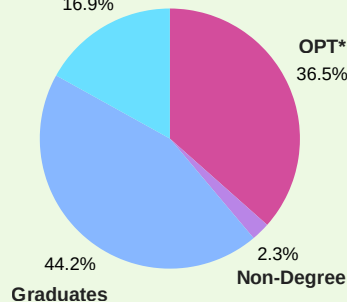
## POPULATION BY COUNTRY, REGION

Albania	1	Egypt	15	Libya	1	South Africa	10
Algeria	2	El Salvador	3	Lithuania	1	Spain	7
Angola	1	Eswatini	1	Malawi	1	Sri Lanka	20
Argentina	2	Ethiopia	3	Malaysia	2	Suriname	2
Australia	10	Finland	1	Mexico	67	Sweden	2
Bangladesh	16	France	4	Mozambique	1	Switzerland	5
Barbados	1	Germany	13	Myanmar	1	Thailand	2
Belarus	2	Ghana	7	Nepal	16	Tunisia	1
Belgium	3	Greece	4	Netherlands	6	Turkey	14
Bhutan	1	Guatemala	21	New Zealand	7	Uganda	1
Bolivia	3	Honduras	20	Nicaragua	2	Ukraine	1
Brazil	25	Hungary	2	Nigeria	32	United Kingdom	21
Bulgaria	1	India	334	Norway	3	Venezuela	4
Canada	43	Indonesia	4	Pakistan	27	Viet Nam	28
Chile	1	Iran	36	Panama	4	Zimbabwe	8
China	391	Ireland	4	Paraguay	3		
Hong Kong	4	Israel	1	Peru	10		
Taiwan	20	Italy	5	Poland	4		
Colombia	22	Japan	4	Portugal	2		
Congo, The	2	Jordan	8	Russia	7		
Democratic Republic of		Kazakhstan	2	Rwanda	3		
Costa Rica	2	Kenya	6	Saudi Arabia	24		
Cote D'Ivoire	9	Korea, (Rep. of)	33	Senegal	3		
Denmark	4	Kuwait	1	Singapore	3		
Ecuador	4	Latvia	1	Slovakia	1		
		Lebanon	2	Slovenia	2		

# 91

## COUNTRIES, REGIONS REPRESENTED

Undergraduates  
16.9%

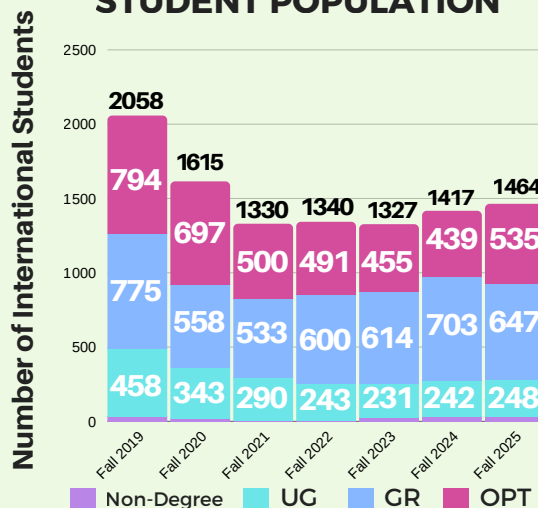


Non-Degree (IEP and others)	34
Undergraduate	248
Graduate	647
Optional Practical Training**	535

\*\*Students working in their field of study

**TOTAL 1,464**

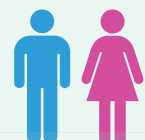
## INTERNATIONAL\* STUDENT POPULATION



## TOP COUNTRIES, REGIONS REPRESENTED

1. CHINA
2. INDIA
3. MEXICO
4. CANADA
5. Iran

56.1% male



43.9% female

# What's Inside?



## Get to Know Your New Home

Life in Dallas, Texas .....	5
Q&A with International Mustangs .....	6
Becoming a Part of the SMU Community .....	7
Our Favorite SMU Traditions .....	8

## Getting Ready for Your Arrival

Welcome New Students .....	9
Steps to Receive your I-20 .....	10
Getting Ready for Your Arrival .....	11
How to Pack for SMU .....	12
Packing Must Haves .....	13

## Navigating Living in the U.S.

Once You've Arrived in the U.S. ....	14
International Office .....	15
Transportation in the U.S. ....	16
U.S. Laws and Safety .....	17
Emergencies: Know What To Do .....	18

## Student Success and Useful Information

Health and Wellness .....	19
Achieving Academic Success at SMU .....	20
SMU Honor Code .....	21
Student Tips for Class Registration .....	22
Job Prep and Employment .....	23
On-Campus Dining Facilities .....	24
Eating Vegetarian at SMU .....	25
Ethnic Grocers and Restaurants.....	26
On-Campus Mail Facilities .....	27
Banking in the U.S. ....	28
Phones in the U.S. ....	29
Important Contact Information .....	30

# Life in Dallas, Texas



**POPULATION:** Dallas is the **9th largest city** in the US and the third largest in Texas with a population of 1,300,000.



**LOCATION:** Dallas is located in the Central Time Zone in North Central Texas, 35 miles east of Fort Worth, 245 miles north, northwest of Houston and 300 miles north of the Gulf of Mexico.



**CLIMATE:** Spring (Mar–May) and fall (Sep–Oct) are warm. Summer (Jun–Aug) is hot. Winter (Nov–Feb) is cool to cold.

Average annual snow days: 1.3

Average rain days: 81 days



**BUSINESS CLIMATE:** The Dallas area is home to 21 Fortune 500 companies including Exxon Mobil, JC Penney, AT&T, Texas Instruments, and others.



**SPORTS & RECREATION:** Dallas is home to five professional sports teams: The Dallas Cowboys (NFL); Dallas Stars (NHL); Dallas Mavericks (NBA); Dallas Wings (WNBA); FC Dallas (MLS) and the Texas Rangers (MLB) plus NASCAR and Indy racing.

## DID YOU KNOW?

- The 52 foot 'Big Tex' statue that greets visitors at the annual State Fair of Texas is the tallest cowboy in Texas.
- With the roof enclosed, the entire Statue of Liberty could fit into the AT & T Stadium.
- The first convenience store, 7-Eleven, got its start in Dallas, and the corporation is headquartered there today.



# Q&A with International Mustangs



Rasiq H.  
India  
Software Engineering



Amanda B.  
Brazil  
Accounting

## What do you do on weekends in Dallas?

I generally like to hang out with my friends. We binge watch shows, play poker, and have dinner parties. Sometimes I try to emulate a new recipe that I came across during the course of the week and test it on my friends. If the weather is not unforgiving, we play soccer near my apartment complex. I also try to get done with my errands such as laundry, grocery runs, meal prep and if time permits, I go record player shopping.

I love trying new restaurants! Dallas is filled with places from different cuisines and cultures. I also have a membership to the Arboretum, which is a botanical garden that you can walk around to see the different flowers; there is also events and cool picnic spots there. Lastly, the Farmer's Market is my favorite place to go on the weekends for breakfast and shops.

## What helped you make friends at SMU?

I reached out to a lot of people at SMU on LinkedIn before I came, the ones that responded connected me to the other students who had reached out to them as well. So, I had a good mix of a network that was new and old to SMU. The people I met at the Orientation and Welcome Party are still my best buddies. I made a lotta friends at events and also while working at the International Office.

To me, at first it was hard to make friends because I was so nervous and still adapting to the culture here. But once I joined different organizations on campus - International Leadership Program and the Brazilian and Portuguese Speakers Association - I was able to meet the people that became my support group. I also gained the confidence to meet other people at events on campus and at the library.

## What's your favorite restaurant in the area?

I honestly wish I could select one, but Dallas is such a heavenlike place for people who like diverse cuisines. I have tried so many new cuisines here such as Thai, Pakistani, Iraqi, Italian, French and Tex-Mex. If I had to, I think I would put it between Deccan Grill or Olivella's. The former because it reminds me of home, and the latter because I think they make the best pizza in the world.

I enjoy trying different restaurants but here are some of my favorites: Delucca Gaucho Pizza is an all you can eat Brazilian pizza for a really affordable price. Hibiki Sushi and Vidora (Tex-Mex food) are both at Deep Ellum, a spot in Dallas with a bunch of restaurants and local shops. Honey Berry Pancakes is awesome for breakfast and has a huge menu - their Nutella pancake is amazing!

## What helped if you felt homesick?

Luckily, I haven't felt homesick because I never really isolated myself from people. Making new friends is hard, but if you just try a little to ask people around campus or events about their degree or where they come from, I'm sure that will go a long way in helping you feel more at home. Because every time you see that person on campus, you have someone to talk to, share experiences with, and maybe go out with them. It takes time, some will want to, some won't. But that doesn't mean you stop trying to socialize.

I regularly call and Facetime my family and friends. The distance is harder during special occasions like birthdays and holidays, but it made me more appreciative of the present and helped me learn to enjoy the little things. I also made my own chosen family here, they helped me through tough times and celebrated every milestone with me! Some of my friends are from Brazil as well, so it helped a lot with homesickness. Now, I have two places to call home and I am so grateful for that.

# #YouAreWelcomeHere



## Get Involved!

Getting involved on campus is a great way to get connected to the SMU community! There are **over 200 student organizations** at SMU including academic, athletic, cultural, and interest groups! Some of these organizations include...

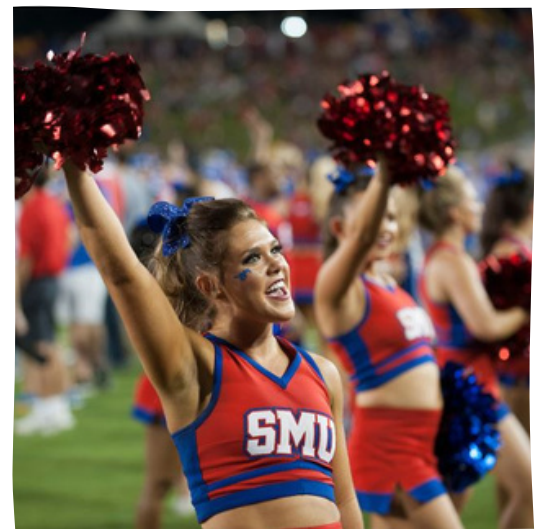
- International Leadership Program
- K-pop Club
- Intramurals Sport Clubs
- Indian Student Association
- Virtual Reality Club
- Asian Council
- Esports Club
- Outdoor Adventures

Discover all the organizations at SMU at:  
[smu360.smu.edu](http://smu360.smu.edu)



Check out the [SMU International Office Channel](#) for our packing video.

# Our favorite SMU Traditions



“We don’t tailgate, we boulevard” is one of the most common phrases that comes up when talking about SMU tradition. A day or two before each football game, beautiful white tents are put up all along the Boulevard and the lawn in front of Dallas Hall. Then, three hours before the game, SMU students, faculty, alumni and friends come out to enjoy food and games on the Boulevard.

**At the beginning of each school year there are many events to enjoy and make new friends. Usually there is also a chance to get free food too! The New Student Welcome Party hosted by the International Office has always been a good one!**

**Homecoming is always a big tradition at SMU. There is banner making, window painting, Peruna painting, and float building. Then there is also the much-anticipated Homecoming court in which each organization nominates a candidate for homecoming queen and king. The week culminates in the Homecoming parade, where students showcase the floats they’ve worked on.**

The Celebration of Lights! Every year in December, thousands of lights are displayed on Dallas Hall and its surrounding area. SMU students come out to sing, listen to groups perform, and hear President Hartzell read The Christmas Story. The night’s finale is always the lighting of the Christmas tree, Dallas Hall, and the surrounding trees with more than 100,000 twinkling lights, which help everyone feel the holiday spirit.

# WELCOME NEW STUDENTS!

Here's what to expect from now until your arrival in Dallas, Texas.

## 1 Pre-Arrival

Pay close attention to your SMU email address inbox. The International Office and other campus offices will be reaching out to you with important information. We will also have webinars available to help you get ready for your arrival and life at SMU.

## 2 Immigration Compliance Course & Government Document Check-In

All **F-1 or J-1 visa holders** are required to complete the Immigration Compliance Course. Then, you must complete the **mandatory government document check-in** once you arrive at SMU.

## 3 Campus Welcome

We are looking forward to welcoming you to the SMU community. We'll host opportunities for you to develop new friendships, become familiar with U.S./Texas culture, and help prepare for the next stage of your professional life. These include: Orientation, Welcome Party, and More!

You are **welcome** here.

For details visit the International Office website and review "[New Student Information](#)"

# STEPS TO RECEIVE YOUR SMU I-20

In order to receive your SMU I20 please follow the steps below. Contact your admitting department directly for instructions on how to submit the required documents.

## STEP 1: Have a photocopy of valid passport ready

## STEP 2: Prepare financial documents

- Funds available must meet or exceed cost for 1 year of student expenses
- Dated no more than 6 months prior to submission
- Printed on bank or financial institution letterhead
- Must be printed in English
- Includes account holder name and account information
- Financial Commitment Form - this will only apply if funds are not personal funds
- Funds must be liquid without restrictions

### Student Loans

Student loan applications are not accepted. Approved loans with a dollar amount will be accepted.

### Financial Documentation not accepted:

Stocks or Bonds, Life Insurance, Property or Land, Proof of Employment or Tax Documents

[For more information about the estimated tuition, fees and other expenses for your program please visit the \*Estimated Expenses for I-20\* page on the International Office website.](#)

## STEP 3: If requesting an F-2 Dependent Visa

The F-2 dependent visa is a nonimmigrant visa which allows dependent spouses and children (unmarried, under 21 years old) of F-1 student visa holders to enter into the U.S. The following is required if your dependents will apply for an F2 visa and travel to the U.S. with you:

- Photocopy of Valid Passport for all dependents
- Photocopy of Marriage Certificate (translated in English) for dependent spouse
- Copy of Birth Certificate (translated in English) for dependent children
- F1 must provide additional funds for each dependent

## STEP 4: Receiving your I-20 Form

The I-20 forms are sent directly to students via their SMU email accounts. Students should monitor their SMU inbox for their I-20 documents. Students should then print and sign the form in ink.



# GETTING READY FOR YOUR ARRIVAL



**Request an I-20**



**Verify information on I-20/DS2019 is accurate.** If you see any errors contact International Office immediately at [intloffice@smu.edu](mailto:intloffice@smu.edu)



**Pay SEVIS fee \***



**Apply for New Visa, F or J \***

Prepare for your visa interview and take the following documents with you:

- SEVIS Fee Receipt
- Letter of Admission
- Form I-20/DS-2019
- Passport
- Proof of funding and/or educational sponsorship documents reflected on I-20/DS-2019



**Check your SMU email regularly for updates related to class registration, orientation, and notices from campus departments**



**Register for health insurance & complete immunizations** to ensure there are no holds on your account. You can register through [my.SMU.edu](http://my.SMU.edu). For more information visit the SMU Health Center website.



**Complete the International Student Compliance Course**



**Plan for housing and an SMU meal plan if required**



**Book your flight and plan travel to campus.** Be sure to enter the U.S. with your F-1 or J-1 student visa; do not enter the U.S. with a tourist visa. You are allowed to enter U.S. up to 30 days prior to program start date listed on I-20/DS-2019



**Prepare for payment of tuition** for more information visit the [SMU Bursars Office website](#)

A guide from students, for students

# How to Pack for SMU

Packing for a long trip can be stressful and that's okay. We're here to help.



## Top 4 Packing Tips

### 1. Bring Just the Essentials

A lot of items can be purchased locally upon arrival and saves room in your suitcase.

### 2. Plan Ahead

Get to know what the weather is like in Dallas to plan your clothes accordingly.

### 3. Bring a Few Sentimentals

Have a few pictures or small mementos that remind you of home.

### 4. Don't Forget Anything

Make a packing list and check it twice. Include what you plan to buy here in the states!

# How to Pack for SMU

## Must-have items:



Wallet & Money



Passport



Printed Compliance Course



Important Documents



Medical & Immunization Records



Emergency Contact

## Clothing and Accessories



Clothes



Glasses



Shoes



Under Clothes

## Recommended

Small Towels



Electronics & Chargers



Universal Adapter



Medicine

Hygiene Products

Snacks

Protective Lotions





# ONCE YOU'VE ARRIVED IN THE U.S.

**We hope you had safe travels!**



**Continue checking your SMU email regularly.** You will be receiving updates related to expectations upon arrival and other important information.

---



**Update your U.S. residence address and U.S. phone number in your My.SMU account.** Department of Homeland Security requires you to update your U.S. local address and phone number within 10 days of any change.

---



**Manage holds on your account.** Please be sure to complete any remaining tasks to clear your enrollment holds, so you can register for classes. You can review your holds by accessing your Student Center through your My.SMU account; any active holds will be listed at the top right-hand side of the screen.

---



**Ensure that you have completed the International Student Compliance Course on SMU Canvas** [smu.instructure.com](https://smu.instructure.com). Log-in with SMU ID number and password.  
*\*video tutorial is available on the International Office website under "[New Student Information](#)"*

---



**Complete Mandatory Document Check-In.** Link is available on the website under Students Tab > "[New Student Information](#)" > Mandatory Government Check-in

---



**Review SMU shuttle, parking services and transportation options** [at parking.smu.edu](https://parking.smu.edu)

---



**Pay your tuition and fees through the Bursar's Office**  
<https://www.smu.edu/EnrollmentServices/Bursar>

---

# International Office

No matter where you are across the globe, the International Office team is here to support you. The office provides services to help you maintain your immigration status and promote your success here at SMU. Stay up to date via our website [www.smu.edu/enrollmentservices/international](http://www.smu.edu/enrollmentservices/international).

## Laura Lee Blanton Building, Suite 101

6185 Airline Rd, Dallas, TX 75205

214-768-4475

intlooffice@smu.edu

## Document Pick-Up Hours:

Monday - Friday:

9:00 AM - 4:00 PM

Wednesdays:

10:00 AM - 4:00 PM

## Advising Hours:

Monday to Thursday:

### Virtual Zoom Advising

9:00 AM - 11:00 AM

### In-person Advising

2:00 PM - 4:00 PM

Follow us:



@smuinternational



# TRANSPORTATION IN THE U.S.



Concerned about how you are going to get around when you come to Dallas? Don't worry- there are a lot of options!

## On-Campus

### Walk

Most students walk to class. Just make sure you leave with enough time to make it to class! Google Maps works great in the area and on campus.

### Bikes

When going to a university, lots of students may bring a bicycle for transportation around campus. SMU provides various areas to keep your bikes, just bring your lock.

Look into purchasing a bike at popular stores such as Walmart, Target, Dick's Sporting Goods, or Academy Outdoors!

### Passio GO

If you feel uncomfortable walking alone after a long night in the library, you can request a safe ride through the app Passio GO. An SMU security officer will pick you up in a golf cart and transport you to any location on campus.



**Pro Tip:** It's a good idea to consider how far away your classes are from each other when selecting them, especially since most classes are 10 minutes apart

## Off-Campus

### Ride Share Services

The most popular options for transportation around Dallas are ride sharing services such as Uber and Lyft. Just download the apps and input your destination! Always make sure the license plate matches!

### DART

The *Dallas Area Rapid Transit* service is a railway that travels around the Dallas area including to the airport and NorthPark Mall. Conveniently, across the street from SMU campus is a DART station! SMU students are eligible for a free SMU DART transit pass by enrolling through the Parking and ID Card Services Office with a valid U.S. phone number. DART is typically much cheaper than ride sharing options.



**Pro Tip:** While the DART is typically safe it would be smart to travel with a friend and avoid riding the DART late at night.

### SMU Express

The SMU Express is a DART operated bus that goes on campus and makes stops at nearby apartments, shopping centers, and restaurants.

For more information visit [the SMU Parking and ID Services Office website.](#)



## Transportation from the airport upon arrival in the U.S.

Most students use ride sharing options such as Uber or Lyft for their commute from the airport to campus, but others may use DART.

# U.S. LAWS & SAFETY

## Did You Know?



### Emergency Blue Lights

There are over 55 emergency Blue Light phones across SMU's Campus, typically placed outside or in parking garages. If you are in danger, find the nearest blue light phone, press the emergency button, and you will be connected with the police department and an officer will be dispatched.

### SMU Alerts

In the case of a campus wide safety threat, SMU will send out alerts through the Emergency Notification System (ENS) to alert everyone on campus that there is a threat. Alerts will also be posted on all official SMU social media sites, emailed, and in buildings alarms will sound.

### Legal Ages in the U.S.

**Drinking Age:** 21+  
**Tobacco Age:** 21+

### Seatbelts

In the U.S. it is **required** to wear a seatbelt in a vehicle, regardless of whether you are driving or not.

### Smoking on Campus

Smoking is prohibited within twenty-five (25) feet of any entrance to buildings on campus.

### Drinking and Driving

In the U.S. it is not permitted to operate a vehicle under the influence of alcohol. If you do, you will jeopardize your student visa status.

### Alcohol on Campus

Alcohol is not permitted in any public area on SMU's campus including the residence halls regardless of your age.

# EMERGENCIES AT SMU- KNOW WHAT TO DO

In the case of an on-campus emergency, alarms will sound across campus buildings with audio instructions on what to do. Students will also get an emergency alert to their emails and phones with updates on the situation.

## Emergency Guidelines

### Lockdown

#### When

You will receive this notice if there is an active shooter or other violence on campus

#### Actions

Depending on the situation: run away, or hide where you are, under furniture; lock or barricade doors; turn out lights; remain quiet. As a last resort fight to defend yourself.

Call 911 if you have information for the police.

Warn others if possible.

Wait for official notice to resume normal activities.



### Evacuate

#### When

You will receive this notice if there is danger inside or near the building.

#### Actions

Leave the building - do not use elevators.

Assist the disabled.

Take your cell phone, keys, and valuables with you.

Proceed to assembly area outside.

Wait for official notice before attempting to re-enter the building.



### Seek Shelter

#### When

Outdoor sirens signal severe weather or an environmental danger outside

#### Actions

Seek shelter inside a building and remain there.

Go to the lowest level of the building, stay in interior hallways, away from glass doors and windows.

Monitor TV or website news, if possible.

Wait for official notice to resume normal activities.





# HEALTH AND WELLNESS

## Dr. Bob Smith Health Center

The health center is an on campus clinic that provides students with access to medical, counseling, and dental services.

Also, the health center has a pharmacy and offers student health insurance.

<https://www.smu.edu/studentaffairs/health-center>

## Office of the Chaplain & Religious Life

“Inspiring the Expression of Religious Faith and Discourse in the University”

The Office of the Chaplain works to ensure that SMU is a place that welcomes religious diversity while offering student support.

<https://www.smu.edu/studentaffairs/religious-life>

## Dedman Center for Lifetime Sports

The recreation center offers a free-weight and cardio gym as well as basketball, volleyball, and tennis courts. You will also find indoor and outdoor pools and countless fitness classes including spin and yoga!



Check out the [SMU International Office Channel](#) for our packing video.

# ACHIEVING ACADEMIC SUCCESS AT SMU

## Altshuler Learning Enhancement Center (A-LEC)

The ALEC offers *free* peer tutoring, writing center, academic counselors, and academic success workshops to undergraduates.

[smu.edu/alec](http://smu.edu/alec)

## Disability Accommodation and Success Strategies (DASS)

The DASS office advocates, assists, and accommodates students with physical or learning disabilities. DASS also provides mentoring, self-advocacy, time management, and other success strategies to aide in the academic success of students with disabilities.

<https://www.smu.edu/provost/saes/academic-support/disability-accommodations>

## ESL (English Second Language)

The Department of Intensive English Program partners with the International Office regarding free classes for students who are having academic difficulties due to the English language.

[smu.edu/Dedman/Resources/Students/ESL](http://smu.edu/Dedman/Resources/Students/ESL)

## Fondren Library

### Online Databases

Fondren offers an extensive online library database to aide students in their research.

### Study Spaces

Need a quiet place to study? Reserve a private study room or visit the Centennial Reading Room. Additionally, the Fondren Library offers a variety of spaces for you and your friends to study!

### Research Support

Need help navigating research, finding scholarly sources, or creating citations? Fondren library offers support both online and in-person in these areas.

[smu.edu/libraries/fondren](http://smu.edu/libraries/fondren)



**Pro Tip:** Don't forget to go to your professors office hours with any questions about lectures, due dates, grades, or anything at all. Professors are there to help you so make sure you take advantage!

# Understanding SMU's Honor Code

## WHAT IS ACADEMIC DISHONESTY?

SMU's Student Handbook defines academic dishonesty in five different ways...

1. **Academic Sabotage:** Intentionally taking any action that negatively affects the academic work of another student.
2. **Cheating:** Intentionally using or attempting to use unauthorized materials, information, or study aids in any academic exercise.
3. **Fabrication:** Intentional and unauthorized falsification or invention of any information related to an academic exercise.
4. **Facilitating Academic Dishonesty:** Intentionally or knowingly helping or attempting to help another to violate any provision of the Honor Code.
5. **Plagiarism.** Intentionally or knowingly representing the words or ideas of another as one's own in any academic exercise.

*Note: This includes ghostwriters.*

## WHAT ARE POSSIBLE SANCTIONS?

1. Informal Warning: Not a part of the student's formal conduct record.
2. Formal Conduct Warning: Part of the student's formal conduct record.
3. Conduct Probation: A warning before:
  - a. Deferred Suspension
  - b. Suspension
  - c. Expulsion

To learn more about Academic Dishonesty and Conduct Proceedings, [please view the SMU Student Handbook at smu.edu/StudentAffairs/officeofthedeanofstudents/StudentHandbook](http://smu.edu/StudentAffairs/officeofthedeanofstudents/StudentHandbook)

# STUDENT TIPS FOR CLASS REGISTRATION



Sohyun 'Juni',  
Accounting

1

## Review All Your Options

**University course catalog, major track, and [ratemyprofessors.com](https://www.ratemyprofessors.com)**

If you have decided your major, browse through the university course catalog and major track to learn about your required courses. If not, you still have plenty of time to discover your interests and passions by taking advantage of all the diverse classes that SMU has to offer. I personally like to check out the course overview on the university course catalog and instructors' reviews on the [ratemyprofessors.com](https://www.ratemyprofessors.com) website.

2

## Make Your Own Schedule

**"Wunderlist", "Class Timetable", "Coursele"**

As an undergraduate, I usually enroll in 4 to 6 classes and try to evenly spread them out over the week. Remember that as international students we are required to enroll full-time every fall and spring semester. If possible, try to have a day off from a school to dedicate for your work, internship, exam prep, and more. You can utilize apps like Wunderlist and Class Timetable that will help you visualize your college schedule.

3

## Talk To Your Academic Advisor

**This will vary depending on your academic level and department**

*New undergraduate students* will be able to schedule an appointment with an academic advisor from the University Advising Center (UAC) for assistance with class selection and registration. *New graduate students* have a difference process based on the academic department. Something I found helpful when deciding between classes was to contact the instructor of the class to ask if you can be added or just simply for class information. You can always find the instructor's contact information on the SMU faculty website.

4

## Be Strategic Selecting Classes

**Excel templates for college courses**

Create an excel file to keep track of a list of courses you need to take at SMU per semester at a glance. While still making sure to keep a balanced life, I worked on getting the core classes and University Curriculum (UC) credits out of the way as soon as possible. Note: Undergraduates can satisfy 2-4 UC requirements at once! Keep an eye out for these cross-functional courses, they are a timesaver that allows you to clear graduation checklist much faster!

5

## Complete all Requirements Needed to Complete Class Registration

**Set a reminder for the time/date you can register for classes**

Make sure to put classes in the cart to make the registration process smooth and fast. Remember that before you can register, you will need to complete the Immigration Compliance Course on SMU Canvas. Then upon arrival at SMU, attend the Mandatory Government Document Check-in to remain in good visa status. Be sure to register in advance for the document-check-in on the International Office website.



# JOB PREP AND EMPLOYMENT *at SMU*

## Job Preparation

- SMU's **Hegi Career Development Center** offers career fairs and other career resources including resume building, cover letter writing, job research tips, interview tips, career counseling, and even professional headshots!

[Learn more at smu.edu/StudentAffairs](https://www.smu.edu/StudentAffairs)

- **12twenty** is an employment search engine that connects students to potential off-campus employers and on-campus job opportunities.

<https://www.smu.edu/studentaffairs/hegi-career-center/twelve-twenty/students>



## On-Campus Employment

- International students may get an on-campus job
  - **Note:** F-1 and J-1 visa holders are not eligible for federal work study positions.
- Students who obtain employment are **REQUIRED** to visit the International Office and get permission **BEFORE** you begin your job for authorization.

## Off-Campus Employment

- Students who have maintained their status for one academic year are eligible to apply for Curricular Practical Training (CPT) or Optional Practical Training (OPT) which allows them to work off-campus.

[Learn more at smu.edu/EnrollmentServices/international](https://www.smu.edu/EnrollmentServices/international)



**Pro Tip:** Meet with a Hegi Career Center advisor to create a U.S. style resume and form a strong career plan!

## The Market in Hughes-Trigg Student Center

Mon - Thu 9:00AM - 8:00PM  
 Fri 9:00AM - 4:00PM  
 Sat 9:00AM - 4:00PM  
 Sun 2:00PM - 6:00PM

## Arnold Dining Hall

<p><b>Breakfast</b>                  Mon - Fri                  7:00AM - 10:30AM</p> <p><b>Dinner</b>                  Mon - Thu.                  5:00PM - 9:00PM</p>	<p><b>Brunch</b>                  Sat - Sun                  9:30AM - 2:00PM</p> <p><b>Dinner</b>                  Fri. and Sat.                  5:00PM - 7:00PM</p>	<p><b>Lunch</b>                  Mon - Sun                  11:00AM - 2:00PM</p> <p><b>Dinner</b>                  Sunday                  5:00PM - 8:00PM</p>
--	---	--

## Umphrey Lee Dining Hall

<p><b>Breakfast</b>                  Mon - Fri                  7:00AM - 10:30AM                  Sat - Sun                  9:30AM - 2:00PM</p>	<p><b>Lunch</b>                  Mon - Fri                  11:00AM - 2:00PM</p>	<p><b>Dinner</b>                  Mon - Fri, Sun                  5:00PM - 8:00PM                  Saturday                  5:00PM - 7:00PM</p>
--	--	--

## Other On-Campus Dining Options

- Starbucks** - Fondren Library
- Lawyer's Inn** - Law School Quad
- La Maison Bleue** - Law School Quad
- Chick-Fil-A** - Hughes-Trigg Student Center
- Panera** - Hughes-Trigg Student Center
- Sushic** - Hughes-Trigg Student Center
- ShakeSmart** - Dedman Center for Lifetime Sports
- Mac's Place** - McElvaney Commons
- Sclafani's Bagels and Sandwiches** - Cox School Of Business



# Eating Vegetarian at SMU

## In Dallas

Being vegetarian can feel daunting in situations when it seems hard to find options to fill one's appetite. However, the proximity of SMU to downtown Dallas provides students with a greater variety of choices.

Every corner gives rise to a new discovery of small restaurants with unique styles and food. Right across the North East dorms there is the *Sinder Plaza* which is a common place for students to hangout while studying or to visit restaurants or ice cream shops.

If one wants to go further off campus, there is an abundance of opportunities to explore new and wonderful flavors on the weekends by planning an adventure with your friends to downtown Dallas using the DART (Dallas Transit) which is free for all SMU students

## At SMU: Dining Halls

### Umphrey Lee

The brownies at the Vegan Dessert Section at Umph are delicacies and if you are an SMU student the Umph cookies have a fame of their own. If you consume dairy products and have a sweet tooth, the Umph Dessert Section is a blessing.

Another captivating feature is the make-your-own sandwich and salad area at Umph, it provides you with the flexibility to choose your own ingredients to make your own veggie salad or sandwich.

### Arnold

Arnold, has their own make-your-taco section which again, could be made vegetarian with only a red bean paste filling.

Arnold also has a Mongolian grill station where students can make their own grill with rice or noodles hence, vegetarians have the ability to personalize their food.

## Other Options on Campus

Something notable about **Mac's place** is that it offers *Beyond Meat* style burgers for us vegetarian lovers. Another favorite are the salads here! Though they are made available in the menu with meat it could be replaced while you are placing your order. A vegetarian or vegan is in for a treat at the **Food Market!** There is a whole section dedicated to vegan versions of food. It ranges from vegan ice creams to vegan oven cooked food and biscuits. It is my haven.

We also have restaurants on campus such as Chick-fil-a, Lawyer's Inn and Cinco Taco. While at Chick-fil-a there are not many vegetarian options, it is a go-to for french fries. The potato tots at Lawyer's Inn are my vegetarian choice.

## Tips from Upperclassmen

- **Tread with Caution!** It might be hard to differentiate between the meat option and vegetarian options sometimes, so when in doubt check with the staff and double check yourself!
- **Double Check!** Check before consuming boiled or cooked vegetables since sometimes in the cooking process butter is added.
- **Take Advantage!** If you're at the SMU dining halls, there are a variety of fruit options available to take and it is a healthy snack between meals and classes to keep around. So grab a fruit on your way out!



**Dedeepya 'Deepu' Chinnam**

Business, Economics, and  
Statistics

# Ethnic Grocers and Restaurants

## African

### Maru Grocers

8353 Park Ln Dallas, TX  
75231

### Affribean Market

2717 E Belt Line Rd Apt 109,  
Carrollton, TX  
9724160701

### Desta Ethipoian

12101 Greenville Ave Ste  
105 Dallas, TX 75243

## Asian

### Hong Kong Market

9780 Walnut St Dallas, TX  
75243

### Thai Oriental Food Store

5615 Sears St Dallas, TX  
75206

### Patel Brothers

8150 Walton Blvd Irving, TX  
75063

### Gui-Rock Korean BBQ

2625 Old Denton Rd Ste 700  
Carrollton, TX 75007

### Royal Thai

5500 Greenville Ave Ste 608  
Dallas, TX 75206

## European

### Cafe Madrid

4501 Travis St Dallas, TX  
75205

### Bavarian Grill

221 W Parker Rd Ste 527  
Plano, TX 75023

### Wooden Spoon

### Scandinavian Shop

1617 K Ave Plano, TX 75074

## Middle Eastern

### Cafe Istanbul

7300 Lone Star Dr Ste 160  
C Plano, TX 75024

### Ali Baba Mediterranean Grill

2103 N Central Expy  
Richardson, TX 75080

### Jasmine Market & Café

820 S Sherman St, Richardson, TX  
75081  
9724374522

### Haji Foods Market & Deli

4621 W Park Blvd Ste 108  
Plano, TX 75093

## Latin

### El Rio Grande Latin Market

5308 Maple Ave Dallas, TX  
75235

### Fiesta Mart

5334 Ross Ave Dallas, TX  
75206

### Nazca Kitchen

8041 Walnut Hill Ln Ste 854  
Dallas, TX 75231

### La Michoacana Meat Market

6770 Greenville Ave, Dallas, TX  
75231

### Brazil Latino Market

4727 Frankford Rd, Dallas, TX  
75287



For more  
information and  
reviews of Dallas  
Restaurants,  
please visit: Yelp,  
Zomato, or Guide  
Live

## Post Office

SMU has a conveniently located mail center in Hughes-Trigg Student Center where you can send letters, and if you live on-campus, you can pick-up packages. The on-campus post office also offers international shipping and mailing supplies such as envelopes, stamps, and boxes.

### Front Counter Hours

Monday - Friday  
8:00 AM - 4:30 PM

### Mail Pick Up

Monday - Friday  
8:00 AM - 5:30 PM  
Saturday  
11:00 AM - 2:00 PM

For questions email [postoffice@smu.edu](mailto:postoffice@smu.edu) or call 214-768-4450.

## Copy Center

**The copy center, located next to the Post Office in Hughes-Trigg Student Center, prints posters, yard signs, booklets, resumes, and projects.**

### Copy Services

Monday - Friday  
8:00 AM - 5:00 PM

For questions or job submissions email [copycentral@smu.edu](mailto:copycentral@smu.edu) or call 214-768-7901

Learn more at the [SMU Mail and Copy Center website](#).

# Banking in the U.S.

Below is a list of major banks near the SMU campus:

## *Bank of America*

Snider Plaza, 6901 Hillcrest  
Dallas, TX 75205  
214-987-3658

Monday – Thursday, 9:00am – 4:00pm

Friday, 9:00am – 6:00pm

Saturday, 9:00am – 1:00pm

Sunday, Closed

ATM Open 24 Hours

## *Chase Bank*

6437 Hillcrest Ave.  
Dallas, TX 75205  
214-360-3170

Monday – Friday, 9:00am – 6:00pm

Saturday, 9:00am – 2:00pm

Sunday, Closed

ATM Open 24 Hours

## *Park Cities Bank*

6829 Hillcrest Ave.  
Dallas, TX 75205  
214-378-3011

Monday – Friday, 9:00am – 5:00pm

Saturday – Sunday, Closed

## *Wells Fargo Bank*

5809 E. Lovers Lane (inside Tom Thumb)  
Dallas, TX 75206  
214-692-8193

Monday – Thursday, 10:00am – 7:00pm

Friday, 9:00am – 7:00pm

Saturday, 9:00am – 5:00pm

Sunday, Closed

ATM Open 24 Hours

## *Bank of America*

Park Cities BC  
5500 Preston Pkwy  
Dallas, TX 75205  
214-559-6300

Monday – Thursday, 9:00am – 4:00pm

Friday, 9:00am – 5:00pm

Saturday, 9:00am – 1:00pm

Sunday, Closed

ATM Open 24 Hours

## *BBVA Compass Bank*

6501 Hillcrest Ave.  
Dallas, TX 75205  
214-346-6141

Monday – Thursday, 9:00am – 5:00pm

Friday, 9:00am – 6:00pm

Saturday, 9:00am – 1:00pm

Sunday, Closed

ATM Open 24 Hours

## *Wells Fargo Bank*

6900 Snider Plaza  
Dallas, TX 75205

Monday – Friday, 9:00am – 6:00pm

Saturday, 10:00am – 2:00pm

Sunday, Closed



# Phones in the U.S.

Information about some companies that offer local phone service in the DFW area is provided below.

## **AT&T**

Retailer providing wireless plans & a range of phones, devices & accessories.

[\(214\) 272-8852](tel:(214)272-8852)

5618 E Mockingbird Ln, Dallas, TX 75206

## **Verizon**

Retailer providing wireless plans & a range of phones, devices & accessories.

[\(214\) 273-6669](tel:(214)273-6669)

3820 Lemmon Ave, Dallas, TX 75219

## **T-Mobile**

Wireless provider offering cell phones, data plans, Internet devices & accessories.

[\(214\) 361-2759](tel:(214)361-2759)

8180 Park Ln Ste C349, Dallas, TX 75231

Research more options on Google!



# Important Contact Information

## United States Emergency

**Phone Number:**

**911**

## Campus Police:

214-768-3333

*Campus Police*

*(Non-Emergency):*

214-768-3388

## International Office:

214-768-4475

intlooffice@smu.edu

## Document Pick-Up Hours:

Monday to Friday:

9:00 AM - 4:00 PM

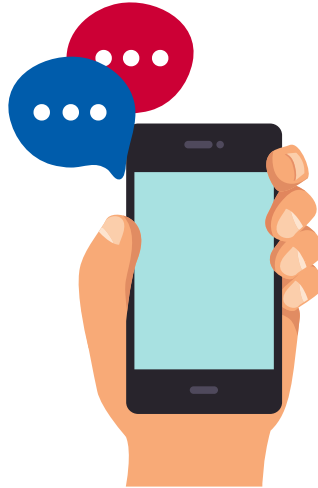
Wednesdays: 10:00 AM - 4:00 PM

## Virtual Advising Hours:

Monday to Thursday:

Virtual: 9:00 AM - 11:00 AM

2:00 PM - 4:00 PM



## SMU IT Help Desk:

214-768-4357

help@smu.edu

help.smu.edu

## Bob Smith Health Center:

*Medical Services:*

214-768-2141

*Nurse Advice:*

214-768-3194

*Pharmacy:*

214-768-2149

*Counseling Services:*

214-768-2277

*Health Education:*

214-768-2393

## Violence Prevention and Support Services:

214-768-4512

## SMU General Helpline:

214-768-2000

## What's the difference between the U.S. emergency number and the campus police?



Campus police are *real* police officers that deal specifically with campus safety. They monitor and patrol campus 24 hours a day to ensure SMU is a safe place! Call the campus police when there is an incident on-campus.

Learn more (including how to report an incident) at [smu.edu/BusinessFinance/Police](https://www.smu.edu/BusinessFinance/Police)

**The International Office is looking forward to welcoming you to SMU. If you have any questions, please do not hesitate to contact us at [intloffice@smu.edu](mailto:intloffice@smu.edu).**

**SMU**

**You Are Welcome Here.**

**SMU** International  
Office