

THE INTERNATIONAL STUDENT HANDBOOK

Southern Methodist University | 2026-2027



LETTER FROM THE ASSISTANT VICE PROVOST FOR INTERNATIONAL AFFAIRS



On behalf of the International Office team, I would like to welcome you to Southern Methodist University. You have chosen to attend one of America's premier comprehensive universities, and we are pleased that you are part of the SMU family.

The SMU campus and community provide a variety of resources to ensure that your time here as a student, scholar, or faculty is productive on both a personal and academic level. The International Office team is committed to facilitating and enriching your experience both before you arrive on campus and while you are here in the United States.

All members of the International Office team work diligently to provide the best and most useful resources prior to your arrival through a comprehensive pre-arrival information packet designed to assist with the visa application process. Once you arrive on campus, we welcome you through various immigration orientations to inform you of the visa compliance regulations you must follow in order to maintain your status as an international student and scholar.

Our team is responsible for reporting all compliance-related events concerning our international population to the federal government. For this reason, it is important that you check your SMU email daily, as regulations may change.

Upon arrival, we encourage you to take advantage of every opportunity to participate in our programming and events. Our office coordinates several events throughout the year to celebrate the diverse cultures and contributions of our international community. Our staff consists of dedicated professionals who are prepared to respond to your unique needs through our comprehensive immigration advising system. We are also here to help you navigate the many resources SMU offers to support your academic success and your research goals.

Once again, welcome to SMU. We are happy that you are with us. Please contact any member of the International Office team if you have questions or concerns. If we do not know the answer to your questions, we will do our best to find someone who does. We are eager to contribute to your success.

Go Mustangs!

Dr. Claudia Sotomayor Hart

What's Inside?



Get to Know Your New Home

Life in Dallas, Texas	5
Q&A with International Mustangs	6
Becoming a Part of the SMU Community	7
Our Favorite SMU Traditions	8

Getting Ready for Your Arrival

Welcome New Students	9
Steps to Receive your I-20	10
Getting Ready for Your Arrival	11
How to Pack for SMU	12
Packing Must Haves	13

Navigating Living in the U.S.

Once You've Arrived in the U.S.	14
International Office	15
Transportation in the U.S.	16
U.S. Laws and Safety	17
Emergencies: Know What To Do	18

Student Success and Useful Information

Health and Wellness	19
Achieving Academic Success at SMU	20
SMU Honor Code	21
Student Tips for Class Registration	22
Job Prep and Employment	23
On-Campus Dining Facilities	24
Eating Vegetarian at SMU	25
Ethnic Grocers and Restaurants.....	26
On-Campus Mail Facilities	27
Banking in the U.S.	28
Phones in the U.S.	29
Important Contact Information	30
Your Global Community on SMU360	31

Life in Dallas, Texas



POPULATION: The Dallas-Fort Worth (DFW) metroplex is the fourth largest metropolitan area in the United States, with Dallas at the center. The Dallas total population of 1.3 million people.



LOCATION: Dallas is located in the Central Time Zone in North Central Texas, 35 miles east of its sister city, Fort Worth. Dallas is 229 miles northwest of Houston, and 187 miles north of Texas's state capitol, Austin.



CLIMATE & WEATHER Dallas has a humid subtropical climate with hot summer temperatures and mild winters. Spring and fall bring pleasant weather but also severe thunderstorms and occasional tornado risk.



INDUSTRY DFW is home to 22 Fortune 500 companies including Exxon Mobil, Southwest Airlines, AT&T, Texas Instruments, and others.



SPORTS & RECREATION: Dallas is home to six professional sports teams: The Dallas Cowboys (NFL); Dallas Stars (NHL); Dallas Mavericks (NBA); Dallas Wings (WNBA); FC Dallas (MLS) and the Texas Rangers (MLB) plus NASCAR and Indy racing.

DID YOU KNOW?

- The 52 foot 'Big Tex' statue that greets visitors at the annual State Fair of Texas is the tallest cowboy in Texas.
- With the roof enclosed, the entire Statue of Liberty could fit into the AT&T Stadium.
- The first convenience store, 7-Eleven, got its start in Dallas, and the corporation is headquartered there today.



Q&A with International Mustangs



Rasiq H.
India
Software Engineering



Amanda B.
Brazil
Accounting

What do you do on weekends in Dallas?

I generally like to hang out with my friends. We binge watch shows, play poker, and have dinner parties. Sometimes I try to emulate a new recipe that I came across during the course of the week and test it on my friends. If the weather is not unforgiving, we play soccer near my apartment complex. I also try to get done with my errands such as laundry, grocery runs, meal prep and if time permits, I go record player shopping.

I love trying new restaurants! Dallas is filled with places from different cuisines and cultures. I also have a membership to the Arboretum, which is a botanical garden that you can walk around to see the different flowers; there is also events and cool picnic spots there. Lastly, the Farmer's Market is my favorite place to go on the weekends for breakfast and shops.

What helped you make friends at SMU?

I reached out to a lot of people at SMU on LinkedIn before I came, the ones that responded connected me to the other students who had reached out to them as well. So, I had a good mix of a network that was new and old to SMU. The people I met at the Orientation and Welcome Party are still my best buddies. I made a lotta friends at events and also while working at the International Office.

To me, at first it was hard to make friends because I was so nervous and still adapting to the culture here. But once I joined different organizations on campus - International Leadership Program and the Brazilian and Portuguese Speakers Association - I was able to meet the people that became my support group. I also gained the confidence to meet other people at events on campus and at the library.

What's your favorite restaurant in the area?

I honestly wish I could select one, but Dallas is such a heavenlike place for people who like diverse cuisines. I have tried so many new cuisines here such as Thai, Pakistani, Iraqi, Italian, French and Tex-Mex. If I had to, I think I would put it between Deccan Grill or Olivella's. The former because it reminds me of home, and the latter because I think they make the best pizza in the world.

I enjoy trying different restaurants but here are some of my favorites: Delucca Gaucho Pizza is an all you can eat Brazilian pizza for a really affordable price. Hibiki Sushi and Vidora (Tex-Mex food) are both at Deep Ellum, a spot in Dallas with a bunch of restaurants and local shops. Honey Berry Pancakes is awesome for breakfast and has a huge menu - their Nutella pancake is amazing!

What helped if you felt homesick?

Luckily, I haven't felt homesick because I never really isolated myself from people. Making new friends is hard, but if you just try a little to ask people around campus or events about their degree or where they come from, I'm sure that will go a long way in helping you feel more at home. Because every time you see that person on campus, you have someone to talk to, share experiences with, and maybe go out with them. It takes time, some will want to, some won't. But that doesn't mean you stop trying to socialize.

I regularly call and Facetime my family and friends. The distance is harder during special occasions like birthdays and holidays, but it made me more appreciative of the present and helped me learn to enjoy the little things. I also made my own chosen family here, they helped me through tough times and celebrated every milestone with me! Some of my friends are from Brazil as well, so it helped a lot with homesickness. Now, I have two places to call home and I am so grateful for that.

#YouAreWelcomeHere



Get Involved!

Getting involved on campus is a great way to get connected to the SMU community! There are **over 200 student organizations** at SMU including academic, athletic, cultural, and interest groups! Some of these organizations include...

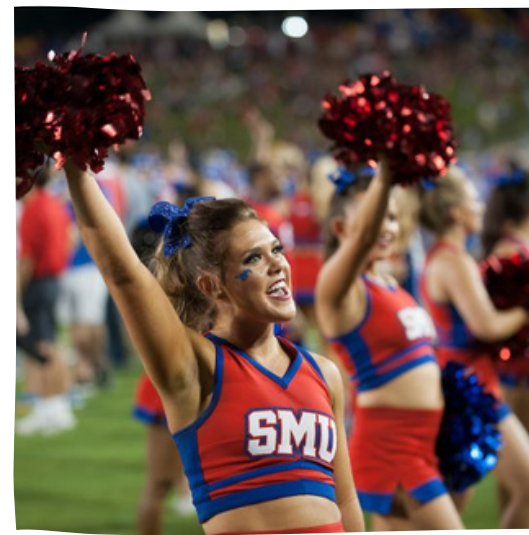
- International Leadership Program
- K-pop Club
- Intramurals Sport Clubs
- Indian Student Association
- Virtual Reality Club
- Asian Council
- Esports Club
- Outdoor Adventures

Discover all the organizations at SMU at:
smu360.smu.edu



Check out the [SMU International Office Channel](#) for our packing video.

Our favorite SMU Traditions



“We don’t tailgate, we boulevard” is one of the most common phrases that comes up when talking about SMU tradition. A day or two before each football game, beautiful white tents are put up all along the Boulevard and the lawn in front of Dallas Hall. Then, three hours before the game, SMU students, faculty, alumni and friends come out to enjoy food and games on the Boulevard.

At the beginning of each school year there are many events to enjoy and make new friends. Usually there is also a chance to get free food too! The New Student Welcome Party hosted by the International Office has always been a good one!

Homecoming is always a big tradition at SMU. There is banner making, window painting, Peruna painting, and float building. Then there is also the much-anticipated Homecoming court in which each organization nominates a candidate for homecoming queen and king. The week culminates in the Homecoming parade, where students showcase the floats they’ve worked on.

The Celebration of Lights! Every year in December, thousands of lights are displayed on Dallas Hall and its surrounding area. SMU students come out to sing, listen to groups perform, and hear President Hartzell read The Christmas Story. The night’s finale is always the lighting of the Christmas tree, Dallas Hall, and the surrounding trees with more than 100,000 twinkling lights, which help everyone feel the holiday spirit.

WELCOME NEW STUDENTS!

Here's what to expect from now until your arrival in Dallas, Texas.

1 Pre-Arrival

Attend Virtual Coffee Hours throughout the summer to prepare for what to expect upon arrival. Check your email often, as The International Office and other campus offices will send important instructions and updates. Before your arrival, please complete the International Student Compliance Course on your SMU Canvas page.

2 Immigration Compliance Course & Government Document Check-In

All new incoming international students are required to complete a government check-in through DocuSign with the International Office. You must be in Dallas to successfully complete the government document check-in. This serves to inform the government that you have arrived in the U.S. with the plan to attend SMU.

3 Attend International Student Orientation

Orientation is mandatory for all incoming international students! Important information will be shared on maintaining visa compliance, student resources at SMU, and life in the United States.

You are **welcome** here.

For details visit the International Office website and review ["New Student Information"](#)

STEPS TO RECEIVE YOUR SMU I-20

In order to receive your SMU I-20 please follow the steps below. Contact your admitting department directly for instructions on how to submit the required documents.

STEP 1: Have a photocopy of valid passport ready

STEP 2: Prepare financial documents

- Funds available must meet or exceed cost for 1 year of student expenses
- Dated no more than 6 months prior to submission
- Printed on bank or financial institution letterhead
- Must be printed in English
- Includes account holder name and account information
- Financial Commitment Form - this will only apply if funds are not personal funds
- Funds must be liquid without restrictions

Student Loans

Student loan applications are not accepted. Approved loans with a dollar amount will be accepted.

Financial Documentation not accepted:

Stocks or Bonds, Life Insurance, Property or Land, Proof of Employment or Tax Documents

[For more information about the estimated tuition, fees and other expenses for your program please visit the *Estimated Expenses for I-20* page on the International Office website.](#)

STEP 3: If requesting an F-2 Dependent Visa

The F-2 dependent visa is a nonimmigrant visa which allows dependent spouses and children (unmarried, under 21 years old) of F-1 student visa holders to enter into the U.S. The following is required if your dependents will apply for an F2 visa and travel to the U.S. with you:

- Photocopy of Valid Passport for all dependents
- Photocopy of Marriage Certificate (translated in English) for dependent spouse
- Copy of Birth Certificate (translated in English) for dependent children
- F1 must provide additional funds for each dependent

STEP 4: Receiving your I-20 Form

The I-20 forms are sent directly to students via their SMU email accounts. Students should monitor their SMU inbox for their I-20 documents. Students should then print and sign the form in ink.



GETTING READY FOR YOUR ARRIVAL



Request an I-20



Verify information on I-20/DS-2019 is accurate. If you see any errors contact International Office immediately at intloffice@smu.edu



Pay SEVIS fee *



Apply for New Visa, F or J *

Prepare for your visa interview and take the following documents with you:

- SEVIS Fee Receipt
- Letter of Admission
- Form I-20/DS-2019
- Passport
- Proof of funding and/or educational sponsorship documents reflected on I-20/DS-2019



Check your SMU email regularly for updates related to class registration, orientation, and notices from campus departments



Register for health insurance & complete immunizations to ensure there are no holds on your account. You can register through my.SMU.edu. For more information visit the SMU Health Center website.



Complete the International Student Compliance Course



Plan for housing and an SMU meal plan if required



Book your flight and plan travel to campus. Be sure to enter the U.S. with your F-1 or J-1 student visa; do not enter the U.S. with a tourist visa. You are allowed to enter U.S. up to 30 days prior to program start date listed on I-20/DS-2019



Prepare for payment of tuition for more information visit the [SMU Bursars Office website](#)

A guide from students, for students

How to Pack for SMU

Packing for a long trip can be stressful and that's okay. We're here to help.



Top 4 Packing Tips

1. Bring Just the Essentials

A lot of items can be purchased locally upon arrival and saves room in your suitcase.

2. Plan Ahead

Get to know what the weather is like in Dallas to plan your clothes accordingly.

3. Bring a Few Sentimentals

Have a few pictures or small mementos that remind you of home!

4. Don't Forget Anything

Make a packing list and check it twice. Include what you plan to buy here in the states!

How to Pack for SMU

Must-have items:



Wallet & Money



Passport



Printed Compliance Course



Important Documents



Medical & Immunization Records



Emergency Contact

Clothing and Accessories



Clothes



Glasses



Shoes



Under Clothes

Recommended

Small Towels



Electronics & Chargers



Universal Adapter



Medicine

Hygiene Products

Snacks

Protective Lotions





ONCE YOU'VE ARRIVED IN THE U.S.

We hope you had safe travels!



Continue checking your SMU email regularly. You will be receiving updates related to expectations upon arrival and other important information.



Update your U.S. residence address and U.S. phone number in your My.SMU account. Department of Homeland Security requires you to update your U.S. local address and phone number within 10 days of any change.



Manage holds on your account. Please be sure to complete any remaining tasks to clear your enrollment holds, so you can register for classes. You can review your holds by accessing your Student Center through your My.SMU account; any active holds will be listed at the top right-hand side of the screen.



Ensure that you have completed the International Student Compliance Course on SMU Canvas smu.instructure.com. Log-in with SMU ID number and password.
**video tutorial is available on the International Office website under [New Student Information](#)*



Complete Mandatory Document Check-In. Link is available on the website under [Students Tab > New Student Information > Mandatory Government Check-in](#)



Review SMU shuttle, parking services and transportation options at parking.smu.edu



Pay your tuition and fees through the Bursar's Office
<https://www.smu.edu/EnrollmentServices/Bursar>

Where to Find the International Office

No matter where you are across the globe, the International Office team is here to support you. Our purpose is to help you maintain your immigration status and promote your success here at SMU. Stay up to date via our website:

www.smu.edu/enrollment-services/international

**Laura Lee Blanton Building
Suite 101**

6185 Airline Rd, Dallas, TX 75205

214-768-4475

intlooffice@smu.edu

Academic Year Advising Hours:

Monday to Thursday:

Virtual Advising

9:00 AM - 11:00 AM

In-person Advising

2:00 PM - 4:00 PM

Summer Break Advising Hours:

Virtual Advising:

Monday & Wednesday:

9:00 AM - 12:00 PM

Virtual Advising:

Tuesday & Thursday:

1:00 PM - 4:00 PM

Advising is not available on Fridays. Walk-ins are not accepted — advising is by appointment only.

Document Pick-Up Hours:

Monday - Friday:

9:00 AM - 4:00 PM

**Office opens at 10am on
Wednesdays**

LET'S STAY CONNECTED!



@smuinternational



TRANSPORTATION IN THE U.S.



On-Campus

Walking On Campus

Most students walk to class. Just make sure you leave with enough time to make it to class! Google Maps works great in the area and on campus.

Biking in the city and at SMU

Biking on campus and around the city is great mode of transportation. SMU provides various areas to keep your bikes, just bring your lock. There are also bike repair stations located around campus for your convenience.

Bikes must be registered with the SMU Police Department. [Click here to register your bike.](#)

Remember to obey traffic laws, yield to pedestrians, and do not leave your bike unattended on any sidewalk, street, fire lane, or pedestrian mall. For more information on biking safety, [click here.](#)

Passio GO

If you feel uncomfortable walking alone after a long night in the library, you can request a safe ride through the app Passio GO. An SMU security officer will pick you up in a golf cart and transport you to any location on campus.

Off-Campus

Ride Share Services

The most popular options for transportation around Dallas are ride sharing services such as Uber and Lyft. Just download the apps and input your destination! Always make sure the license plate matches your requested ride!

DART

The *Dallas Area Rapid Transit* service is a railway that travels throughout and around Dallas. Conveniently, across the street from SMU campus is a DART station! SMU students are eligible for a free SMU DART transit pass by enrolling through the Parking and ID Card Services Office with a valid U.S. phone number. DART is typically much more affordable than ride sharing options.



Pro Tip: While the DART is typically safe it would be smart to travel with a friend and avoid riding the DART late at night.

SMU Express

The SMU Express is a DART operated bus that provides complimentary transportation around SMU's campus, nearby shopping centers, and restaurants. In order to board, remember to have your DART Transit Pass!

For more information visit [the SMU Parking and ID Services Office website.](#)



Transportation from the airport upon arrival in the U.S.

Most students use ride sharing options such as Uber or Lyft for their commute from the airport to campus, but others may use DART.

U.S. LAWS & SAFETY

Did You Know?



Emergency Blue Lights

There are over 55 emergency Blue Light phones across SMU's Campus, typically placed outside or in parking garages. If you are in danger, find the nearest blue light phone, press the emergency button, and you will be connected with the SMU Police department. An officer will be dispatched to the location where the call was made.

SMU Alerts

In the case of an emergency on campus, SMU will send out alerts through the Emergency Notification System (ENS) to alert everyone on campus that there is a threat. Alerts will also be posted on all official SMU social media sites, emailed, and in buildings alarms will sound.

Legal Ages in the U.S.

Drinking Age: 21+
Tobacco Age: 21+

Smoking on Campus

Smoking is prohibited within 25 feet of any campus building entrance.

Seatbelts

In the U.S. it is **required** for both passengers and the driver to wear a seatbelt at all times when operating a vehicle.

Driving Under the Influence

In the US, it is illegal to operate a vehicle under the influence of alcohol or drugs. If you do, you will jeopardize your student visa status.

Alcohol on Campus

Alcohol is not permitted in any public area on SMU's campus including the residence halls regardless of your age.

EMERGENCIES AT SMU- KNOW WHAT TO DO

In the case of an on-campus emergency, alarms will sound across campus buildings with audio instructions on what to do. Students will also get an emergency alert to their emails and phones with updates on the situation.

Emergency Guidelines

Lockdown

When

You will receive this notice if there is an active shooter or other violence on campus

Actions

Depending on the situation: run away, or hide where you are, under furniture; lock or barricade doors; turn out lights; remain quiet. As a last resort fight to defend yourself.

Call 911 if you have information for the police.

Warn others if possible.

Wait for official notice to resume normal activities.



Evacuate

When

You will receive this notice if there is danger inside or near the building.

Actions

Leave the building - do not use elevators.

Assist the disabled.

Take your cell phone, keys, and valuables with you.

Proceed to assembly area outside.

Wait for official notice before attempting to re-enter the building.



Seek Shelter

When

Outdoor sirens signal severe weather or an environmental danger outside

Actions

Seek shelter inside a building and remain there.

Go to the lowest level of the building, stay in interior hallways, away from glass doors and windows.

Monitor TV or website news, if possible.

Wait for official notice to resume normal activities.





HEALTH AND WELLNESS

Dr. Bob Smith Health Center

The health center is an on campus clinic that provides students with access to medical, counseling, and dental services.

Also, the health center has a pharmacy and offers student health insurance.

<https://www.smu.edu/studentaffairs/health-center>

Office of the Chaplain & Religious Life

*Inspiring the Expression of Religious
Faith and Discourse in the University*

The Office of the Chaplain works to ensure that SMU is a place that welcomes religious diversity while offering student support.

<https://www.smu.edu/studentaffairs/religious-life>

Dedman Center for Lifetime Sports

The recreation center offers a free-weight and cardio gym as well as basketball, volleyball, and tennis courts. You will also find indoor and outdoor pools and countless fitness classes including spin and yoga!



Check out the [SMU International Office Channel](#) for our packing video.

ACHIEVING ACADEMIC SUCCESS AT SMU

Altshuler Learning Enhancement Center (A-LEC)

The ALEC offers *free* peer tutoring, writing center, academic counselors, and academic success workshops to undergraduates.

smu.edu/alec

Disability Accommodation and Success Strategies (DASS)

The DASS office advocates, assists, and accommodates students with physical or learning disabilities. DASS also provides mentoring, self-advocacy, time management, and other success strategies to aide in the academic success of students with disabilities.

<https://www.smu.edu/provost/saes/academic-support/disability-accommodations>

ESL (English Second Language)

The Department of Intensive English (IEP) partners with the International Office to offer free classes for students experiencing academic difficulties due to language barriers. IEP can help you navigate new vocabulary in an academic setting, and provide helpful tips on writing college papers.

smu.edu/Dedman/Resources/Students/ESL

Fondren Library

Online Databases

Fondren offers an extensive online library database to aide students in their research.

Study Spaces

Need a quiet place to study? Reserve a private study room or visit the Centennial Reading Room. Additionally, the Fondren Library offers a variety of spaces for you and your friends to study!

Research Support

Need help navigating research, finding scholarly sources, or creating citations? Fondren library offers support both online and in-person in these areas.

smu.edu/libraries/fondren



Pro Tip: Don't forget to go to your professors' office hours with any questions about lectures, due dates, or grades. Professors are always happy to help you so make sure you take advantage!

Understanding SMU's Honor Code

WHAT IS ACADEMIC DISHONESTY?

SMU's Student Handbook defines academic dishonesty in five different ways...

1. **Academic Sabotage:** Intentionally taking any action that negatively affects the academic work of another student.
2. **Cheating:** Intentionally using or attempting to use unauthorized materials, information, or study aids in any academic exercise.
3. **Fabrication:** Intentional and unauthorized falsification or invention of any information related to an academic exercise.
4. **Facilitating Academic Dishonesty:** Intentionally or knowingly helping or attempting to help another to violate any provision of the Honor Code.
5. **Plagiarism.** Intentionally or knowingly representing the words or ideas of another as one's own in any academic exercise.

WHAT ARE POSSIBLE SANCTIONS?

1. **Informal Warning:** Written warning, this warning is not shown on a student's academic record for first time offense of academic dishonesty.
2. **Formal Conduct Warning:** Academic misconduct warning will be shown on a student's academic record upon serious cases of academic dishonesty or continued misconduct.
3. **Deferred Suspension and Honor Code Violation Notation on Transcript:** Student receives a formal warning that any further violation may result in suspension. An Honor Violation notation will be placed on the student's academic transcript.
4. **Expulsion:** Student will be separated from the University on a permanent basis.

To learn more about Academic Dishonesty and Conduct Proceedings, please view the SMU Student Handbook at www.smu.edu/studentaffairs/dean-of-students/student-handbook

STUDENT TIPS FOR CLASS REGISTRATION



Sohyun 'Juni',
Accounting

1

Review All Your Options

University course catalog, major track, and [ratemyprofessors.com](https://www.ratemyprofessors.com)

If you have decided your major, browse through the university course catalog and major track to learn about your required courses. If not, you still have plenty of time to discover your interests and passions by taking advantage of all the diverse classes that SMU has to offer. I personally like to check out the course overview on the university course catalog and instructors' reviews on the [ratemyprofessors.com](https://www.ratemyprofessors.com) website.

2

Make Your Own Schedule

"Wunderlist", "Class Timetable", "Coursele"

As an undergraduate, I usually enroll in 4 to 6 classes and try to evenly spread them out over the week. Remember that as international students we are required to enroll full-time every fall and spring semester. If possible, try to have a day off from a school to dedicate for your work, internship, exam prep, and more. You can utilize apps like Wunderlist and Class Timetable that will help you visualize your college schedule.

3

Talk To Your Academic Advisor

This will vary depending on your academic level and department

New undergraduate students will be able to schedule an appointment with an academic advisor from the University Advising Center (UAC) for assistance with class selection and registration. *New graduate students* have a different process based on the academic department. Something I found helpful when deciding between classes was to contact the instructor of the class to ask if you can be added or just simply for class information. You can always find the instructor's contact information on the SMU faculty website.

4

Be Strategic Selecting Classes

Excel templates for college courses

Create an excel file to keep track of a list of courses you need to take at SMU per semester at a glance. While still making sure to keep a balanced life, I worked on getting the core classes and University Curriculum (UC) credits out of the way as soon as possible. Note: Undergraduates can satisfy 2-4 UC requirements at once! Keep an eye out for these cross-functional courses, they are a timesaver that allows you to clear graduation checklist much faster!

5

Complete all Requirements Needed to Complete Class Registration

Set a reminder for the time/date you can register for classes

Make sure to put classes in the cart to make the registration process smooth and fast. Remember that before you can register, you will need to complete the Immigration Compliance Course on SMU Canvas. Then upon arrival at SMU, attend the Mandatory Government Document Check-in to remain in good visa status. Be sure to register in advance for the document-check-in on the International Office website.



JOB PREP AND EMPLOYMENT

at SMU

Job Preparation

- SMU's **Hegi Career Development Center** offers career fairs and other career resources including resume building, cover letter writing, job research tips, interview tips, career counseling, and even professional headshots! [Learn more at Hegi Career Development Center Webpage](#)
- **12twenty** is an employment search engine that connects students to potential off-campus employers and on-campus job opportunities.

<https://www.smu.edu/studentaffairs/hegi-career-center/twelve-twenty/students>



On-Campus Employment

- International students may get an on-campus job
 - **Note:** *F-1 and J-1 visa holders are not eligible for federal work study positions.*
- Students who obtain employment are **REQUIRED** to visit the International Office and get permission **BEFORE** you begin your job for authorization.

Off-Campus Employment

- Students who have maintained their status for one academic year are eligible to apply for Curricular Practical Training (CPT) or Optional Practical Training (OPT) which allows them to work off-campus.

[Learn more at smu.edu/EnrollmentServices/international](https://www.smu.edu/EnrollmentServices/international)



Pro Tip: Meet with a Hegi Career Center advisor to create a U.S. style resume and form a strong career plan!

The Market in Hughes-Trigg Student Center

Mon - Thu 9:00AM - 8:00PM
 Fri 9:00AM - 4:00PM
 Sat 9:00AM - 4:00PM
 Sun 2:00PM - 6:00PM

Arnold Dining Hall

Breakfast

Mon - Fri
 7:00AM - 10:30AM

Brunch

Sat - Sun
 9:30AM - 2:00PM

Lunch

Mon - Sun
 11:00AM - 2:00PM

Dinner

Mon - Thu.
 5:00PM - 9:00PM

Dinner

Fri. and Sat.
 5:00PM - 7:00PM

Dinner

Sunday
 5:00PM - 8:00PM

Umphrey Lee Dining Hall

Breakfast

Mon - Fri
 7:00AM - 10:30AM
 Sat - Sun
 9:30AM - 2:00PM

Lunch

Mon - Fri
 11:00AM - 2:00PM

Dinner

Mon - Fri, Sun
 5:00PM - 8:00PM
 Saturday
 5:00PM - 7:00PM

Other On-Campus Dining Options

- Starbucks** - Fondren Library
- Lawyer's Inn** - Law School Quad
- La Maison Bleue** - Law School Quad
- Chick-Fil-A** - Hughes-Trigg Student Center
- Panera** - Hughes-Trigg Student Center
- Sushic** - Hughes-Trigg Student Center
- ShakeSmart** - Dedman Center for Lifetime Sports
- Mac's Place** - McElvaney Commons
- Sclafani's Bagels and Sandwiches** - Cox School Of Business



Eating Vegetarian at SMU

In Dallas

Being vegetarian can feel daunting in situations when it seems hard to find options to fill one's appetite. However, the proximity of SMU to downtown Dallas provides students with a greater variety of choices.

Every corner gives rise to a new discovery of small restaurants with unique styles and food. Right across the North East dorms there is the *Sinder Plaza* which is a common place for students to hangout while studying or to visit restaurants or ice cream shops.

If one wants to go further off campus, there is an abundance of opportunities to explore new and wonderful flavors on the weekends by planning an adventure with your friends to downtown Dallas using the DART (Dallas Transit) which is free for all SMU students

At SMU: Dining Halls Umphrey Lee

The brownies at the Vegan Dessert Section at Umph are delicacies and if you are an SMU student the Umph cookies have a fame of their own. If you consume dairy products and have a sweet tooth, the Umph Dessert Section is a blessing.

Another captivating feature is the make-your-own sandwich and salad area at Umph, it provides you with the flexibility to choose your own ingredients to make your own veggie salad or sandwich.

Arnold

Arnold, has their own make-your-taco section which again, could be made vegetarian with only a red bean paste filling.

Arnold also has a Mongolian grill station where students can make their own grill with rice or noodles hence, vegetarians have the ability to personalize their food.

Other Options on Campus

Something notable about **Mac's place** is that it offers *Beyond Meat* style burgers for us vegetarian lovers. Another favorite are the salads here! Though they are made available in the menu with meat it could be replaced while you are placing your order.

A vegetarian or vegan is in for a treat at **The Market!** There is a whole section dedicated to vegan versions of food. It ranges from vegan ice creams to vegan oven cooked food and biscuits. It is my haven.

We also have restaurants on campus such as Chick-fil-a, Lawyer's Inn and Sushic Sushi. While at Chick-fil-a there are not many vegetarian options, it is a go-to for French fries. The potato tots at Lawyer's Inn are my vegetarian choice.

Tips from Upperclassmen

- **Tread with Caution!** It might be hard to differentiate between the meat option and vegetarian options sometimes, so when in doubt check with the staff!
- **Double Check!** Check before consuming boiled or cooked vegetables since sometimes in the cooking process butter is added.
- **Take Advantage!** If you're at the SMU dining halls, there are a variety of fruit options available to take and it is a healthy snack between meals and classes to keep around. So grab a fruit on your way out!



**Dedeepya 'Deepu'
Chinnam**

Business, Economics, and
Statistics

Ethnic Grocers and Restaurants

African

Maru Grocers

8353 Park Ln
Dallas, TX 75231

Afriibbean Market

2717 E Belt Line Rd
Apt 109, Carrollton, TX

Desta Ethiopian

12101 Greenville Ave Ste
Unit 105 Dallas, TX 75243

Asian

Hong Kong Market Place

9780 Walnut St
Unit 360 Dallas, TX 75243

Patel Brothers

8150 Walton Blvd
Irving, TX 75063

Doma Seolleongtang

11441 N Stemmons Fwy
Ste 137 Dallas, TX 75229

Royal Thai

5500 Greenville Ave Ste 608
Dallas, TX 75206

European

Cafe Madrid

4501 Travis St
Dallas, TX 75205

Bavarian Grill

221 W Parker Rd Ste 527
Plano, TX 75023

Wooden Spoon Scandinavian Shop

1617 K Ave
Plano, TX 75074

Kuby's Sausage House

6601 Snider Plaza
Dallas, TX 75205

Middle Eastern

Ali Baba Mediterranean Grill

2103 N Central Expy
Richardson, TX 75080

Cafe Istanbul

7300 Lone Star Dr Ste 160C
Plano, TX 75024

Jasmine Market & Café

820 S Sherman St
Richardson, TX 75081

Haji Foods Market & Deli

4621 W Park Blvd Ste 108
Plano, TX 75093

Latin

El Rio Grande Latin Market

5308 Maple Ave
Dallas, TX 75235

Fiesta Mart

5334 Ross Ave
Dallas, TX 75206

Nazca Kitchen

8041 Walnut Hill Ln Ste 854
Dallas, TX 75231

La Michoacana Meat Market

6770 Greenville Ave
Dallas, TX 75231

Brazil Latino Market

4727 Frankford Rd
Dallas, TX 75287



For more
information and
reviews of Dallas
Restaurants,
please visit: Yelp,
Zomato, or Guide
Live

Post Office

SMU has a conveniently located mail center in Hughes-Trigg Student Center where you can send letters, and if you live on-campus, you can pick-up packages. The on-campus post office also offers international shipping and mailing supplies such as envelopes, stamps, and boxes.

Front Counter Hours

Monday - Friday
8:00 AM - 4:30 PM

Mail Pick Up

Monday - Friday
8:00 AM - 5:30 PM
Saturday
11:00 AM - 2:00 PM

For questions email postoffice@smu.edu or call 214-768-4450.

Copy Center

The copy center, located next to the Post Office in Hughes-Trigg Student Center, prints posters, yard signs, booklets, resumes, and projects.

Copy Services

Monday - Friday
8:00 AM - 5:00 PM

For questions or job submissions email copycentral@smu.edu or call 214-768-7901

Learn more at the [SMU Mail and Copy Center website](#).

Banking in the U.S.

To open a bank account in the US, please be prepared to show government issued identification like a passport or drivers license. You will also need your SSN or ITIN number.

Below is a list of major banks near the SMU campus:

Prosperity Bank

7031 Snider Plaza
Dallas, TX 75205
(972) 461-4870

Chase Bank

6437 Hillcrest Ave
Dallas, TX 75205
(214) 360-3170

Bank of America

5516 Greenville Ave
Dallas, TX 75205
(214) 527-3560

Wells Fargo Bank

4150 Mockingbird Ln
Dallas, TX 75205
(214) 692-8193

InterBank

5307 Mockingbird Ln Unit 110
Dallas, TX 75206
(214) 370-4500

Amegy Bank

3100 Monticelle Ave Unit 100
Dallas, TX 75205
(214) 754-6082

PNC Bank

6501 Hillcrest Ave
Dallas, TX 75205
(214) 346-6141

Frost Bank

6321 Hillcrest Ave
Dallas, TX 75205
(800) 513-7678



Phones in the U.S.

Information about some companies that offer local phone service in the DFW area is provided below.

- **AT&T**

Retailer providing wireless plans and a range of phones, devices and accessories
(214) 272-8852
5618 E Mockingbird Ln, Dallas, TX 75206

- **Verison**

Retailer providing wireless plans and a range of phones, devices and accessories
(214) 273-6669
3820 Lemmon Ave, Dallas, TX 75219

- **T-Mobile**

Wireless provider offering cell phones, data plans, Internet devices and accessories.
(214) 750-6855
8687 N Central Expy Ste 2326, Dallas, TX 75225

Research more options on Google!



Important Contact Information

United States Emergency

Phone Number:

911

Campus Police:

214-768-3333

Campus Police

(Non-Emergency):

214-768-3388

International Office:

214-768-4475

intlooffice@smu.edu

Document Pick-Up Hours:

Monday to Friday:

9:00 AM - 4:00 PM

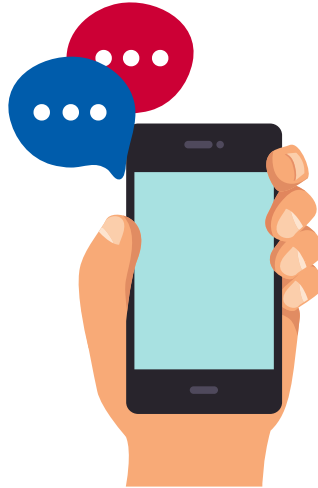
Wednesdays: 10:00 AM - 4:00 PM

Virtual Advising Hours:

Monday to Thursday:

Virtual: 9:00 AM - 11:00 AM

2:00 PM - 4:00 PM



SMU IT Help Desk:

214-768-4357

help@smu.edu

help.smu.edu

Bob Smith Health Center:

Medical Services:

214-768-2141

Nurse Advice:

214-768-3194

Pharmacy:

214-768-2149

Counseling Services:

214-768-2277

Health Education:

214-768-2393

Violence Prevention and Support Services:

214-768-4512

SMU General Helpline:

214-768-2000

What's the difference between the U.S. emergency number and the campus police?

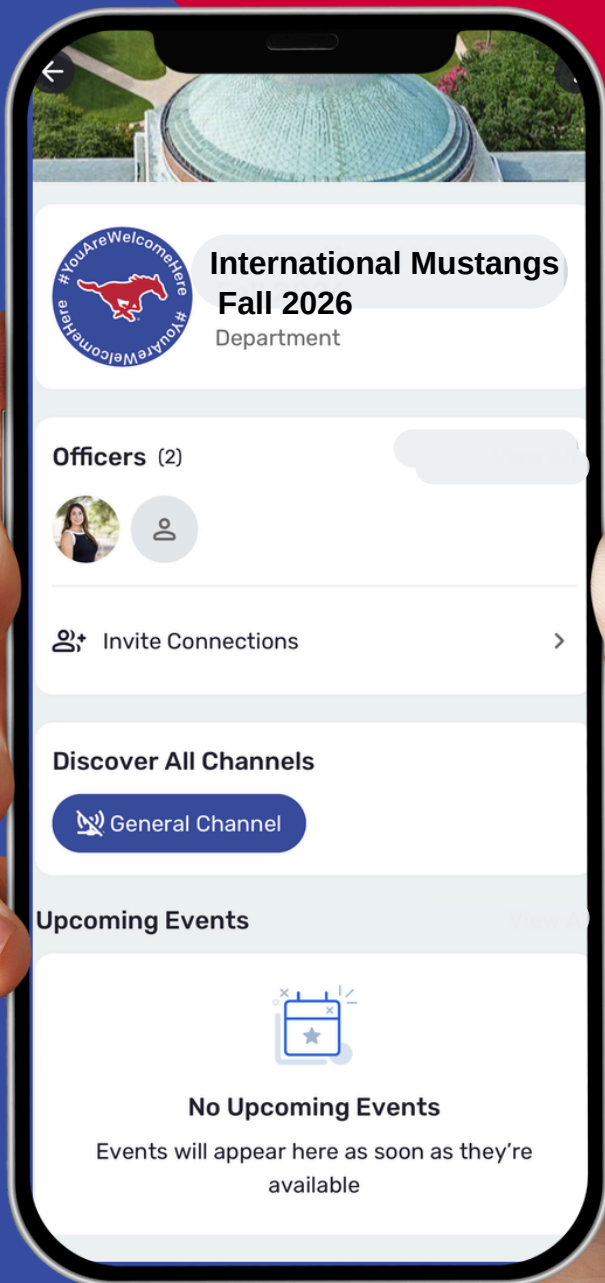


Campus police are *real* police officers that deal specifically with campus safety. They monitor and patrol campus 24 hours a day to ensure SMU is a safe place! Call the campus police when there is an incident on-campus.

Learn more (including how to report an incident) at smu.edu/BusinessFinance/Police

Welcome to SMU Class of 2030!

Download SMU 360 to stay connected to
your global community



The International Office is looking forward to welcoming you to SMU. If you have any questions, please do not hesitate to contact us at intloffice@smu.edu.

SMU

You Are Welcome Here.

SMU International
Office