



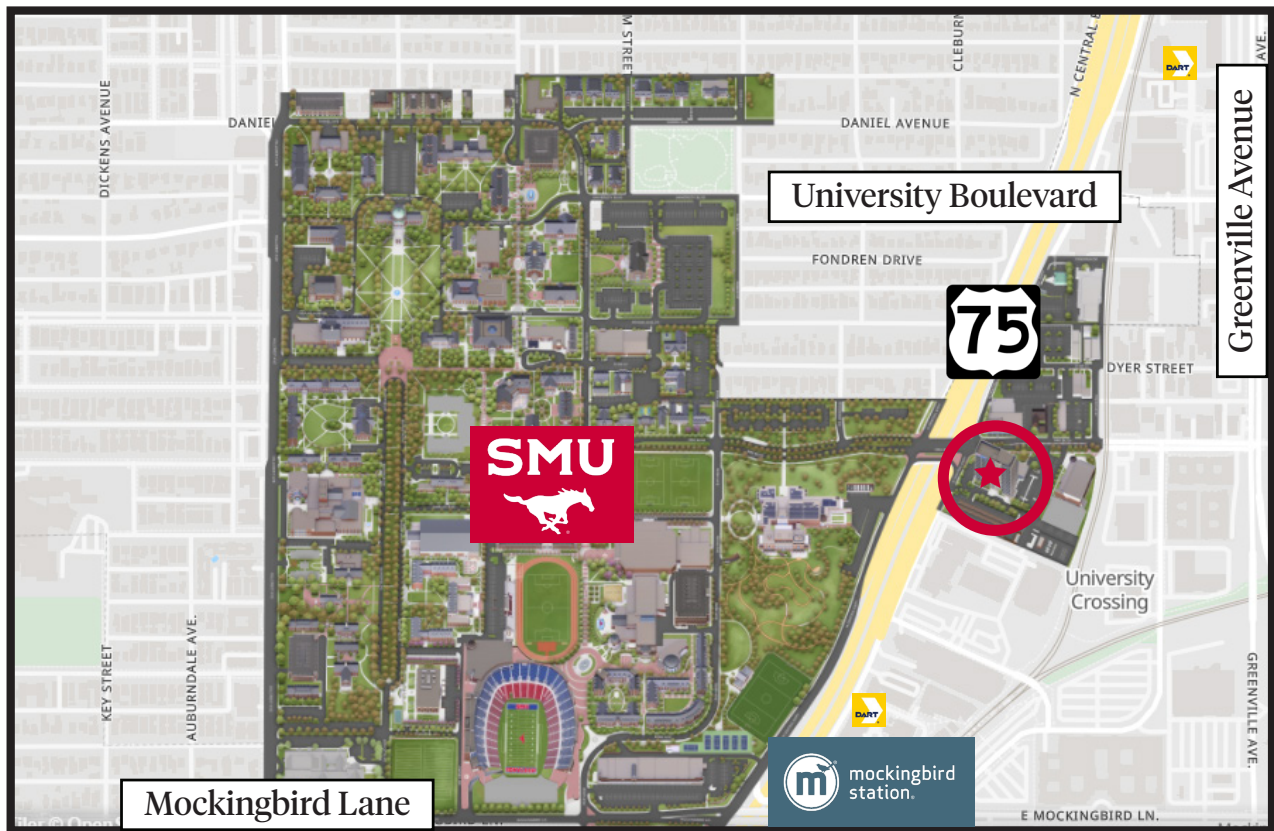
# For Lease - Expressway Tower

6116 N. Central Expressway - Dallas, Texas 75206



OFFICE OF FACILITIES  
PLANNING & MANAGEMENT

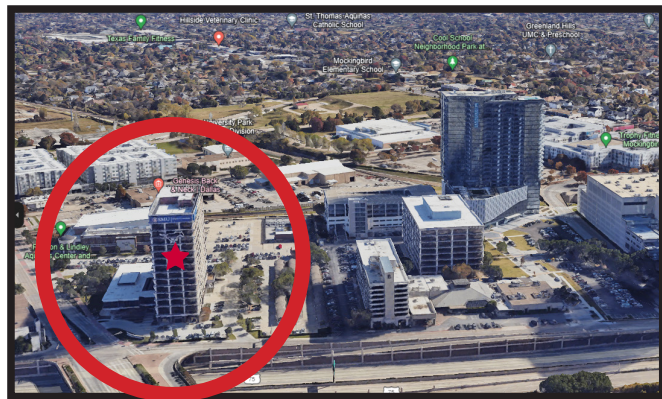




## Expressway Tower

6116 North Central Expressway  
Dallas, TX 75206

- 15 stories- 214,409 SF
- Typical floor plan- 14,000 SF
- Year of construction- 1967
- Owner: Southern Methodist University



## Building and Location Amenities

- On-site security
- Garage, covered, and surface parking
- On-site property management
- Full-service, on-site café
- On-site lactation room
- Excellent ingress/egress to North Central Expressway
- Walkable to DART light rail
- Walkable to Mockingbird Station
- Walkable to many restaurants

Contact: Thomas Hooke - [thooke@smu.edu](mailto:thooke@smu.edu) - (214) 768-6828

Expressway Tower  
6116 North Central Expressway  
Dallas, Texas 75206

**SMU**  
OFFICE OF FACILITIES  
PLANNING & MANAGEMENT





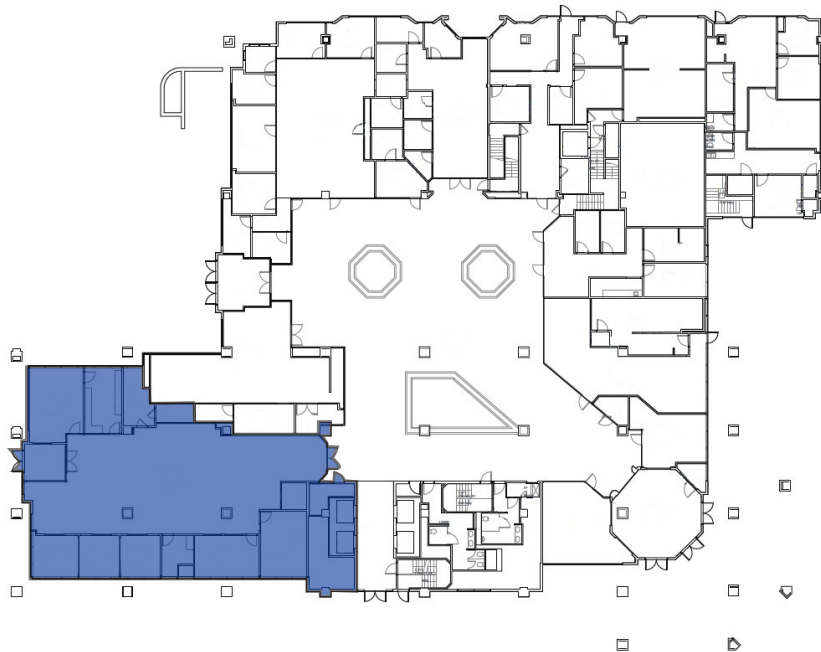
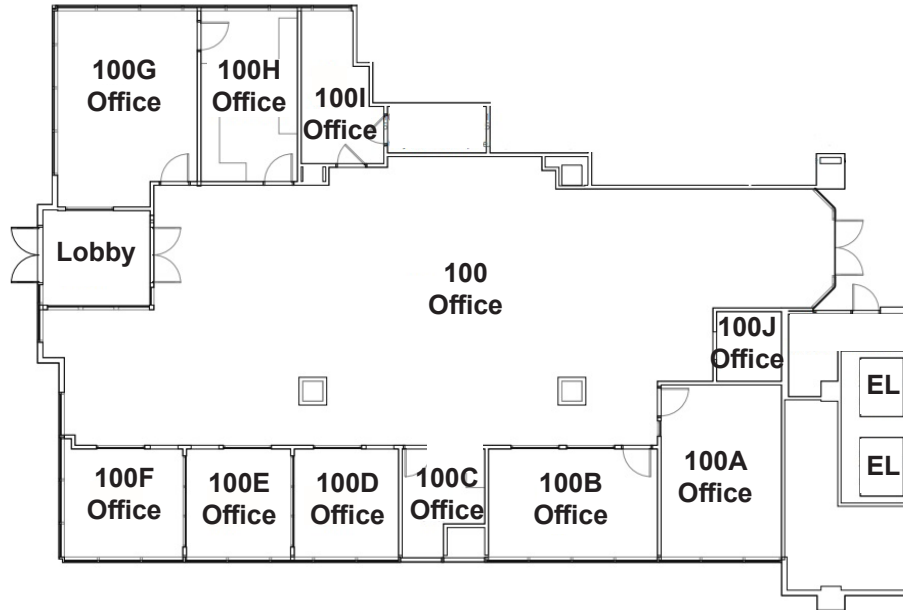
Contact: Thomas Hooke - [thooke@smu.edu](mailto:thooke@smu.edu) - (214) 768-6828

Expressway Tower  
6116 North Central Expressway  
Dallas, Texas 75206

**SMU**  
OFFICE OF FACILITIES  
PLANNING & MANAGEMENT

**AVAILABLE FOR LEASE SOON**

**Suite 100 - 5,133 rsf  
Available In Summer 2024**



Contact: Thomas Hooke - [thooke@smu.edu](mailto:thooke@smu.edu) - (214) 768-6828

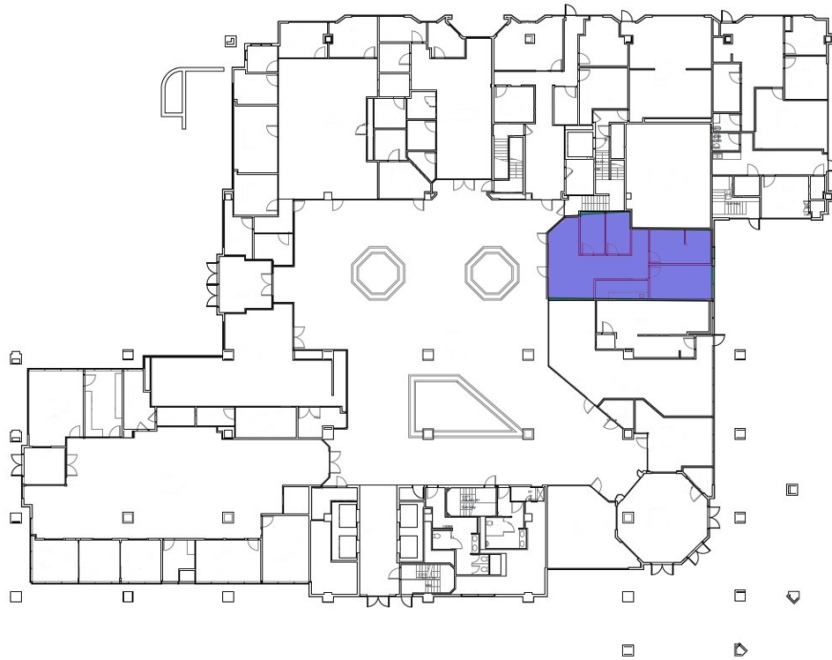
Expressway Tower  
6116 North Central Expressway  
Dallas, Texas 75206

**SMU**  
OFFICE OF FACILITIES  
PLANNING & MANAGEMENT



**AVAILABLE FOR LEASE SOON**

**Suite 160 - 1,260 rsf  
Available August 2024**



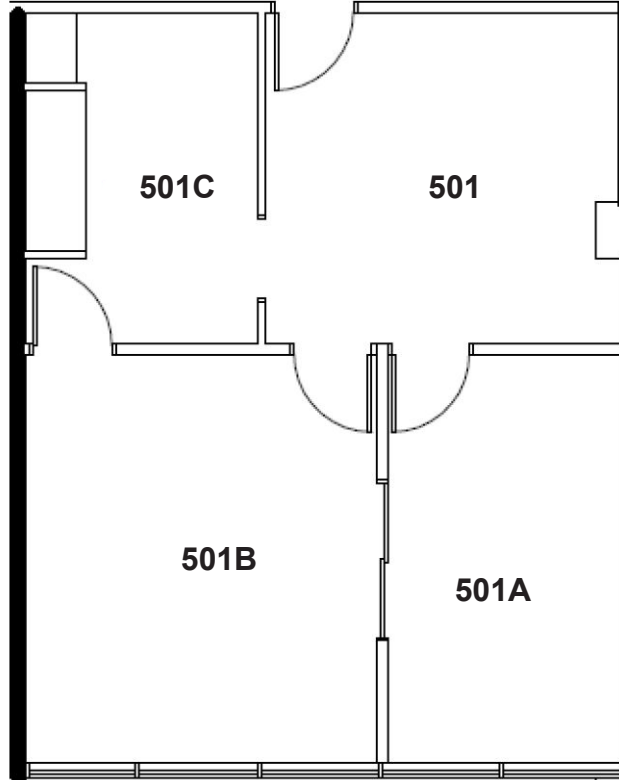
Contact: Thomas Hooke - [thooke@smu.edu](mailto:thooke@smu.edu) - (214) 768-6828

Expressway Tower  
6116 North Central Expressway  
Dallas, Texas 75206

**SMU**  
OFFICE OF FACILITIES  
PLANNING & MANAGEMENT

**AVAILABLE FOR LEASE**

**Suite 501 - 853 rsf**



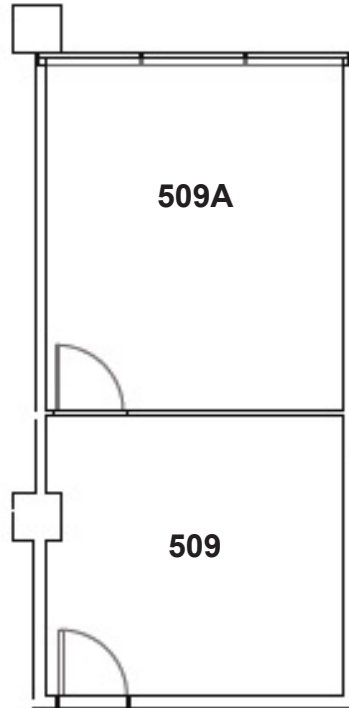
Contact: Thomas Hooke - [thooke@smu.edu](mailto:thooke@smu.edu) - (214) 768-6828

Expressway Tower  
6116 North Central Expressway  
Dallas, Texas 75206

**SMU**  
OFFICE OF FACILITIES  
PLANNING & MANAGEMENT

**AVAILABLE FOR LEASE SOON**

**Suite 509- 511rsf  
Available September 2024**



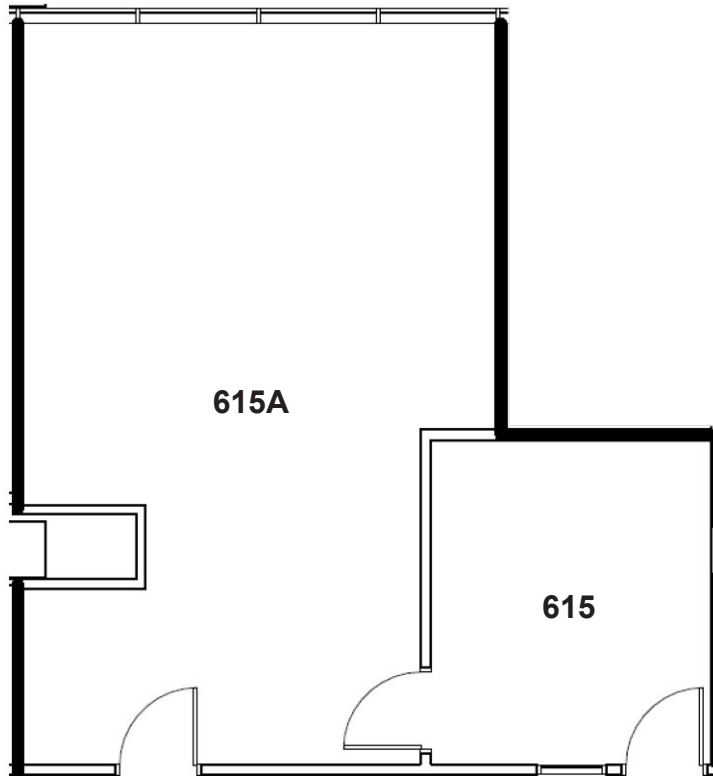
Contact: Thomas Hooke - [thooke@smu.edu](mailto:thooke@smu.edu) - (214) 768-6828

Expressway Tower  
6116 North Central Expressway  
Dallas, Texas 75206

**SMU**  
OFFICE OF FACILITIES  
PLANNING & MANAGEMENT

# AVAILABLE FOR LEASE

## Suite 615 - 828 rsf



Contact: Thomas Hooke - [thooke@smu.edu](mailto:thooke@smu.edu) - (214) 768-6828

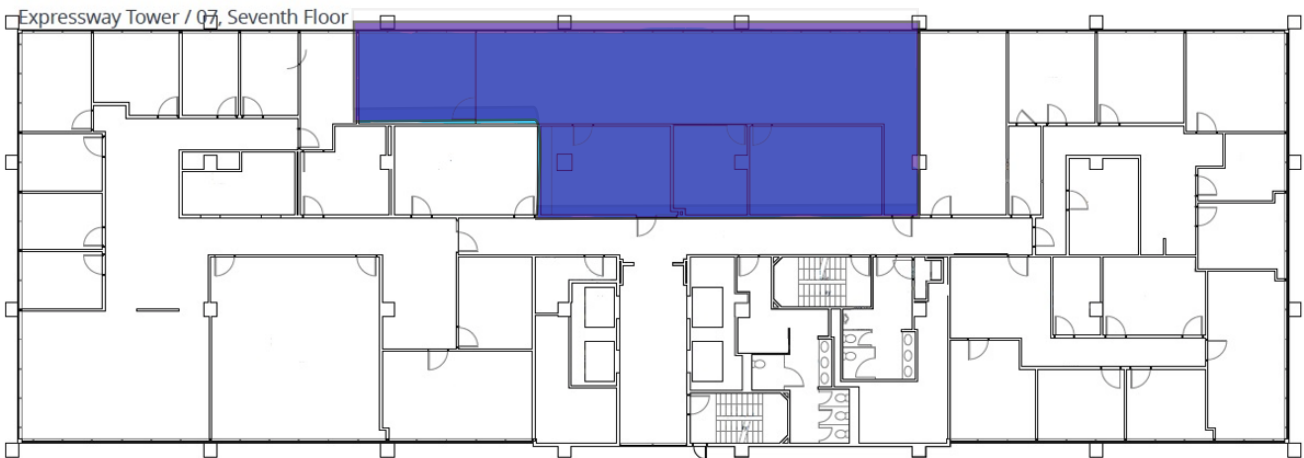
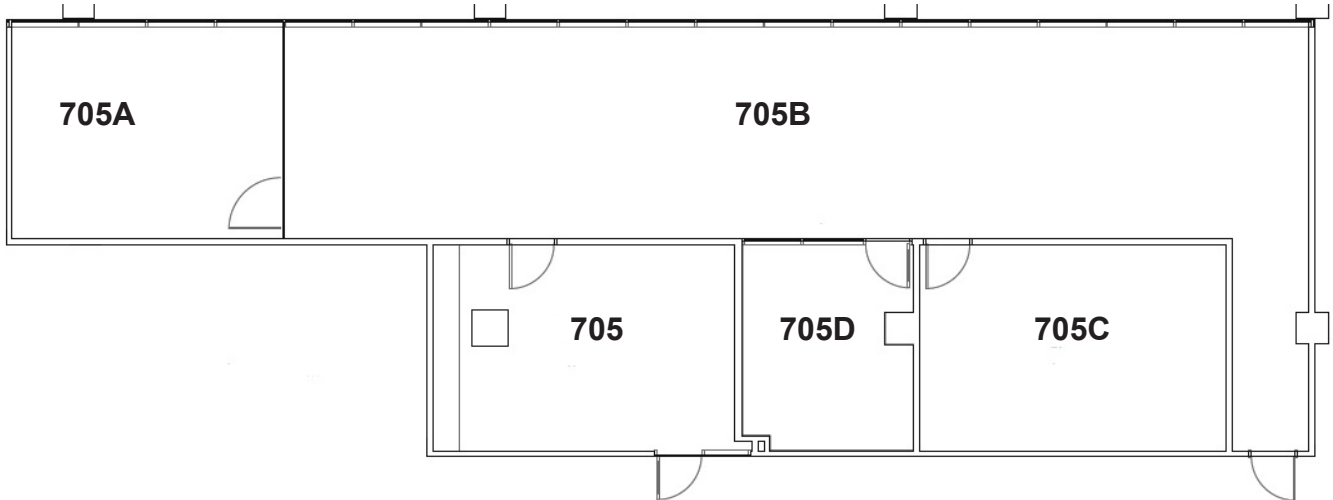
Expressway Tower  
6116 North Central Expressway  
Dallas, Texas 75206

**SMU**  
OFFICE OF FACILITIES  
PLANNING & MANAGEMENT



# AVAILABLE FOR LEASE

## Suite 705 - 2,762 rsf



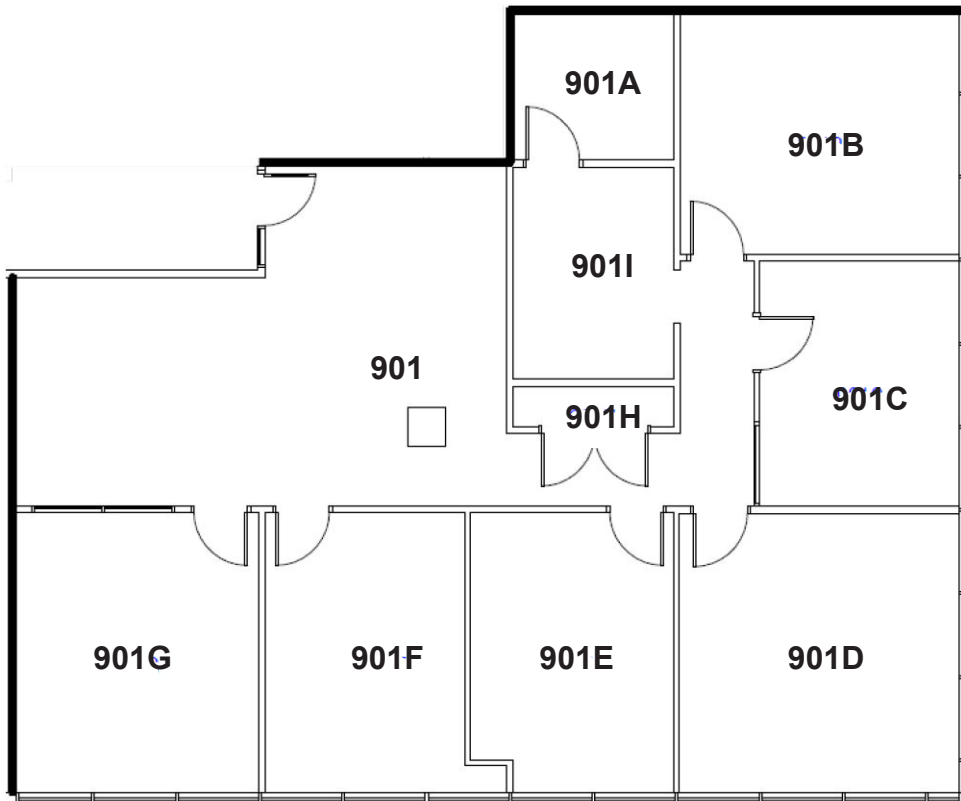
Contact: Thomas Hooke - [thooke@smu.edu](mailto:thooke@smu.edu) - (214) 768-6828

Expressway Tower  
6116 North Central Expressway  
Dallas, Texas 75206

**SMU**  
OFFICE OF FACILITIES  
PLANNING & MANAGEMENT

# AVAILABLE FOR LEASE

## Suite 901 - 2,563 rsf



Contact: Thomas Hooke - [thooke@smu.edu](mailto:thooke@smu.edu) - (214) 768-6828

Expressway Tower  
6116 North Central Expressway  
Dallas, Texas 75206

**SMU**  
OFFICE OF FACILITIES  
PLANNING & MANAGEMENT

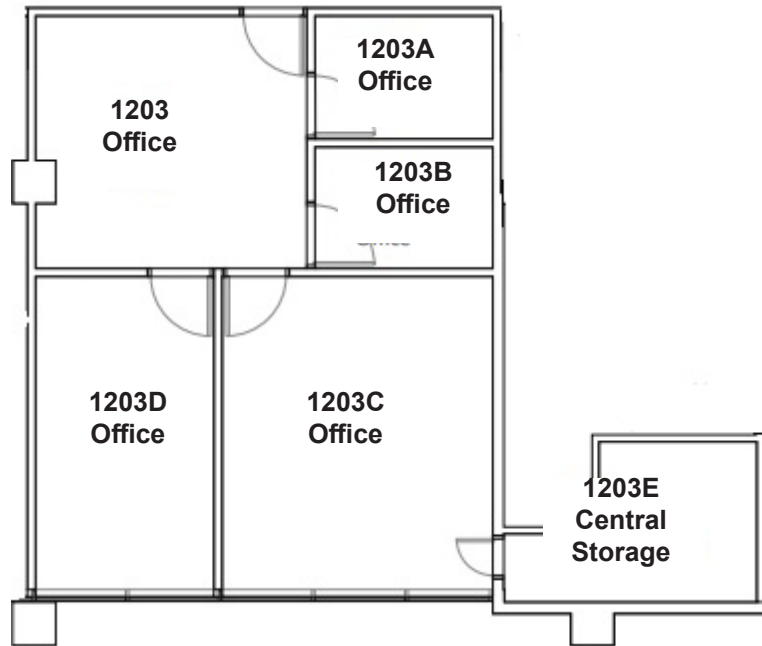






**AVAILABLE FOR LEASE SOON**

**Suite 1203 - 957 rsf  
Available In Summer 2024**



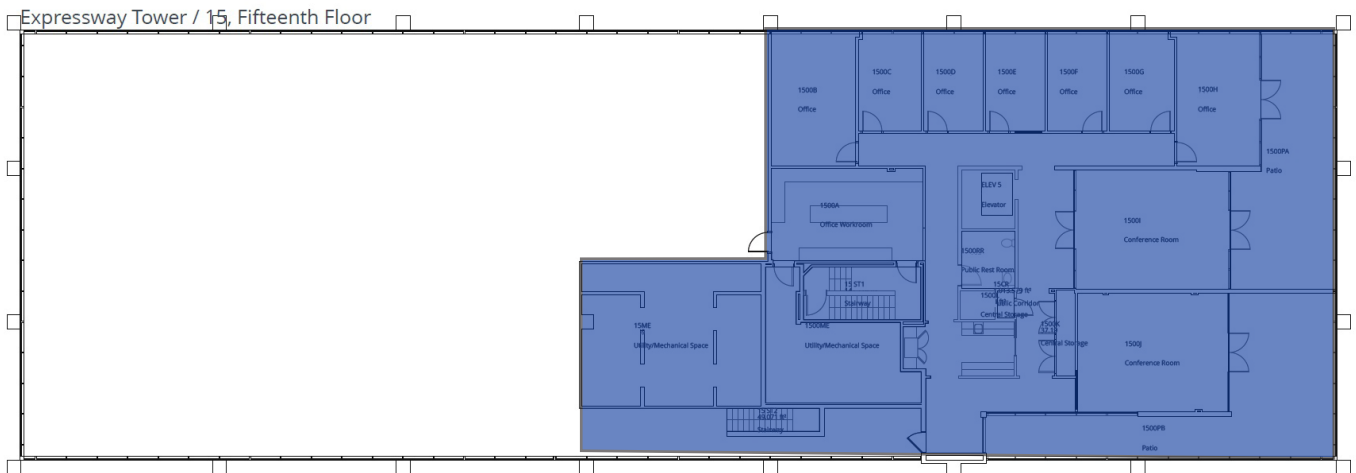
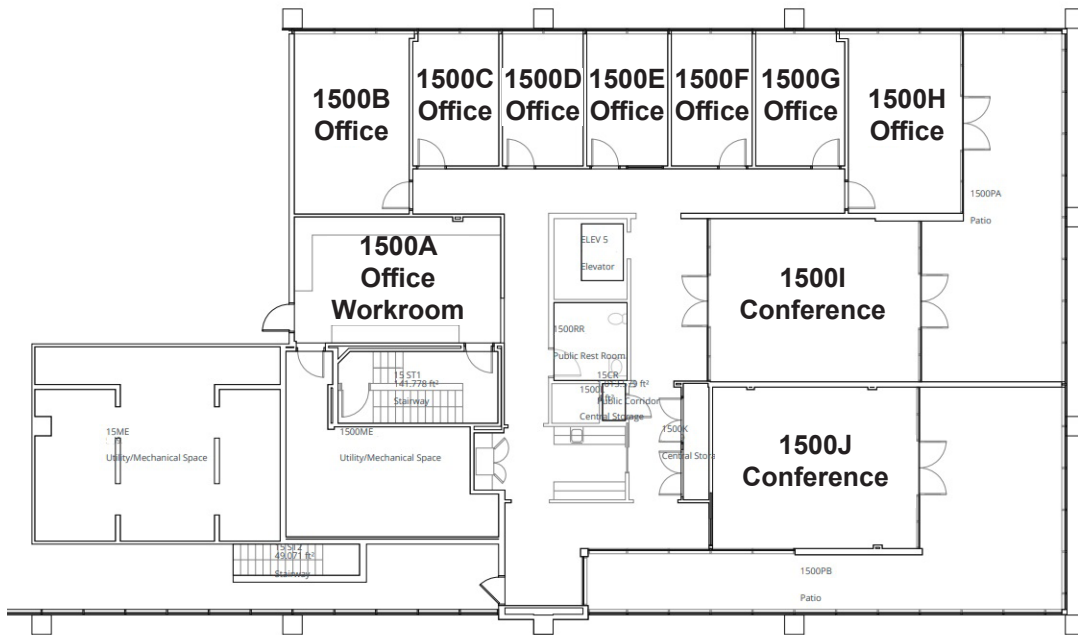
Contact: Thomas Hooke - [thooke@smu.edu](mailto:thooke@smu.edu) - (214) 768-6828

Expressway Tower  
6116 North Central Expressway  
Dallas, Texas 75206

**SMU**  
OFFICE OF FACILITIES  
PLANNING & MANAGEMENT

**AVAILABLE FOR LEASE SOON**

**Suite 1500 - 6,098 rsf  
Available In Summer 2024**



Contact: Thomas Hooke - [thooke@smu.edu](mailto:thooke@smu.edu) - (214) 768-6828

Expressway Tower  
6116 North Central Expressway  
Dallas, Texas 75206

**SMU**  
OFFICE OF FACILITIES  
PLANNING & MANAGEMENT





## Information About Brokerage Services

*Texas law requires all real estate licensees to give the following information about brokerage services to prospective buyers, tenants, sellers and landlords.*

**TYPES OF REAL ESTATE LICENSE HOLDERS:**

- **A BROKER** is responsible for all brokerage activities, including acts performed by sales agents sponsored by the broker.
- **A SALES AGENT** must be sponsored by a broker and works with clients on behalf of the broker.

**A BROKER'S MINIMUM DUTIES REQUIRED BY LAW (A client is the person or party that the broker represents):**

- Put the interests of the client above all others, including the broker's own interests;
- Inform the client of any material information about the property or transaction received by the broker;
- Answer the client's questions and present any offer to or counter-offer from the client; and
- Treat all parties to a real estate transaction honestly and fairly.

**A LICENSE HOLDER CAN REPRESENT A PARTY IN A REAL ESTATE TRANSACTION:**

**AS AGENT FOR OWNER (SELLER/LANDLORD):** The broker becomes the property owner's agent through an agreement with the owner, usually in a written listing to sell or property management agreement. An owner's agent must perform the broker's minimum duties above and must inform the owner of any material information about the property or transaction known by the agent, including information disclosed to the agent or subagent by the buyer or buyer's agent.

**AS AGENT FOR BUYER/TENANT:** The broker becomes the buyer/tenant's agent by agreeing to represent the buyer, usually through a written representation agreement. A buyer's agent must perform the broker's minimum duties above and must inform the buyer of any material information about the property or transaction known by the agent, including information disclosed to the agent by the seller or seller's agent.

**AS AGENT FOR BOTH - INTERMEDIARY:** To act as an intermediary between the parties the broker must first obtain the written agreement of each party to the transaction. The written agreement must state who will pay the broker and, in conspicuous bold or underlined print, set forth the broker's obligations as an intermediary. A broker who acts as an intermediary:

- Must treat all parties to the transaction impartially and fairly;
- May, with the parties' written consent, appoint a different license holder associated with the broker to each party (owner and buyer) to communicate with, provide opinions and advice to, and carry out the instructions of each party to the transaction.
- Must not, unless specifically authorized in writing to do so by the party, disclose:
  - that the owner will accept a price less than the written asking price;
  - that the buyer/tenant will pay a price greater than the price submitted in a written offer; and
  - any confidential information or any other information that a party specifically instructs the broker in writing not to disclose, unless required to do so by law.

**AS SUBAGENT:** A license holder acts as a subagent when aiding a buyer in a transaction without an agreement to represent the buyer. A subagent can assist the buyer but does not represent the buyer and must place the interests of the owner first.

**TO AVOID DISPUTES, ALL AGREEMENTS BETWEEN YOU AND A BROKER SHOULD BE IN WRITING AND CLEARLY ESTABLISH:**

- The broker's duties and responsibilities to you, and your obligations under the representation agreement.
- Who will pay the broker for services provided to you, when payment will be made and how the payment will be calculated.

**LICENSE HOLDER CONTACT INFORMATION:** This notice is being provided for information purposes. It does not create an obligation for you to use the broker's services. Please acknowledge receipt of this notice below and retain a copy for your records.

Licensed Broker /Broker Firm Name or Primary Assumed Business Name	License No.	Email	Phone
Designated Broker of Firm	License No.	Email	Phone
Licensed Supervisor of Sales Agent/ Associate	License No.	Email	Phone
Sales Agent/Associate's Name	License No.	Email	Phone

\_\_\_\_\_  
Buyer/Tenant/Seller/Landlord Initials

\_\_\_\_\_  
Date

**Regulated by the Texas Real Estate Commission**

TXR-2501

Thomas Hooke, 1335 Cloverdale Dr Richardson TEXAS 75080

Thomas Hooke

**Information available at [www.trec.texas.gov](http://www.trec.texas.gov)**

IABS 1-0 Date

Phone: (214)235-1078

Fax:

Blank Template

Produced with Lone Wolf Transactions (zipForm Edition) 717 N Harwood St, Suite 2200, Dallas, TX 75201 [www.lwolf.com](http://www.lwolf.com)

# Expressway Tower

For Leasing Information  
Contact

Thomas Hooke  
thooke@smu.edu  
214-768-6828



**SMU**

OFFICE OF FACILITIES  
PLANNING & MANAGEMENT