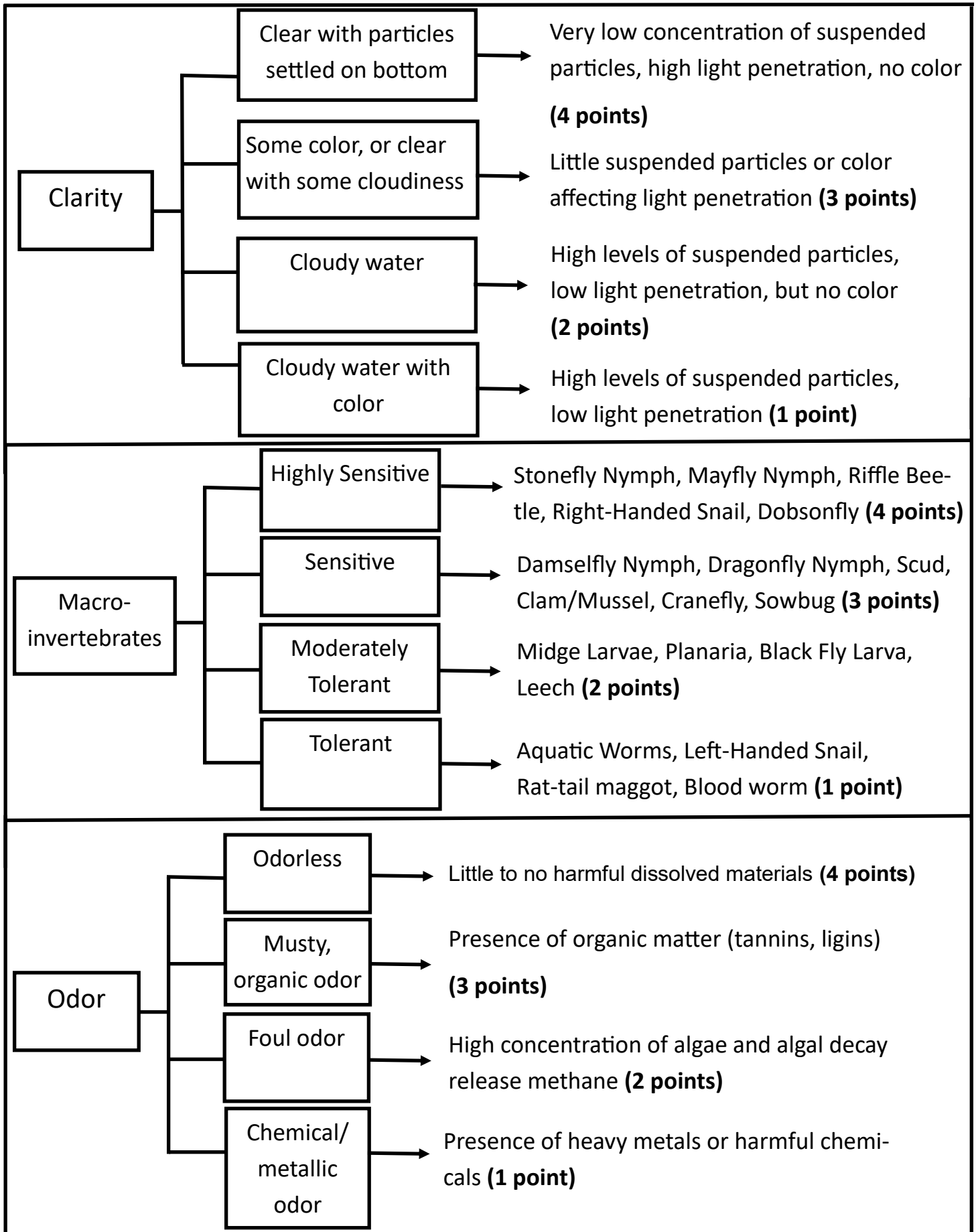


Water Quality Key

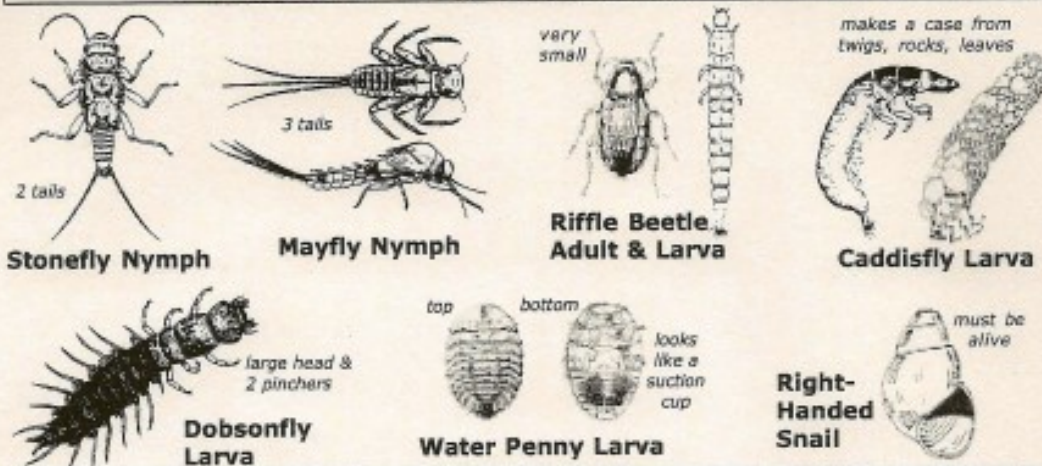


Water Quality Key

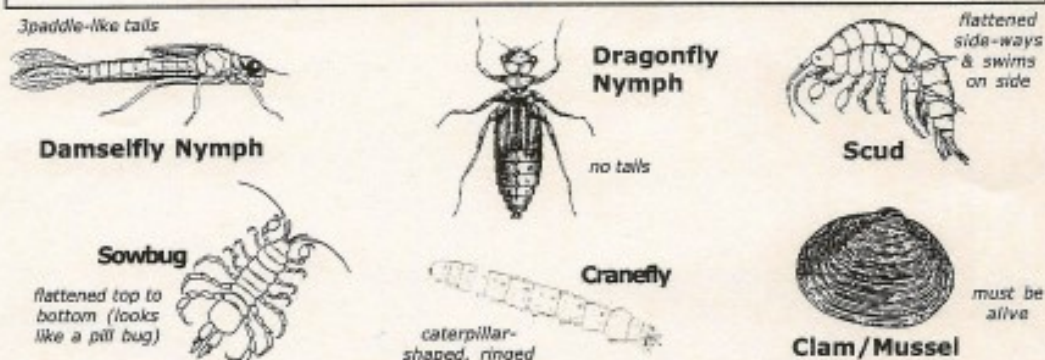
Wildlife	Abundant, varied	Three or more animal species observed. Very healthy water quality (4 points)
	Sparse, less varied	Two species seen or heard. Medium–healthy water quality (3 points)
	Abundant, unvaried	One animal species observed. Poor water quality, able to sustain tolerant animals (2 points)
	Sparse, unvaried	No wildlife seen or heard. Unhealthy water quality, unable to sustain life (1 point)
Vegetation	Abundant, varied	6+ different plants found on water line or in water. Very healthy water quality, Strong ability to filter pollution (4 points)
	Abundant, less varied	4-5 species found on water line or in water. Healthy water quality, some ability to filter pollution (3 points)
	Sparse, varied	2-3 species found on water line or in water. Medium water quality, Low ability to filter pollution (2 points)
	Sparse, unvaried	One species or no species found on water line. Unhealthy water quality, Low to no ability to filter pollution (1 point)
pH	6-8.5	Healthy pH range for fish and aquatic life (4 points)
	8.5-9.5	Slightly alkaline, some species negatively impacted (3 points)
	>9.5 or 5-6	Alkaline or acidic, damaging to aquatic organisms, potentially fatal (2 points)
	<5	Highly acidic, fatal to fish and other aquatic life (1 point)

Macroinvertebrate Identification Key

GROUP 1 – Very Intolerant of Pollution



GROUP 2 – Moderately Intolerant of Pollution



GROUP 3 – Fairly Tolerant of Pollution



GROUP 4 – Very Tolerant of Pollution



Source: National Park Service

<https://www.nps.gov/obed/learn/education/upload/OBED-Lesson-Plan-Aquatic-Macroinvertebrates.pdf>