

A photograph showing a large pile of trash, including plastic bags and crumpled paper, being loaded into the back of a white truck. The truck's rear door is open, and the trash is overflowing. A man in a yellow shirt is visible near the truck. The scene is set outdoors during the day.

# Talking Trash

Photo: MikeDotta via Shutterstock

What activities are part of your everyday life that produce trash?



# Where does your trash go?



# Landfills

- Accepts almost all waste
- Contains trash and can reduce its spread throughout the environment

## Problems:

- If toxic waste is accepted, it will cause pollution that flows off the landfill site
- Take up a lot of space for a longer than human lifespan
- Bad smell and appearance



# Nature

Arrive by wind, water, and littering

## Problems

- Eaten by wildlife and farm animals
- Pollutes our water and land when waste breaks down in nature



# Recycling Plant

- Plastic, glass, metal, and batteries can be recycled into new products
- Less space is needed in landfills
- Less waste travels to the environment
- It costs money to run the machines in recycling plants
- Recycling plants provide jobs



# Composting Center

When plant matter sits for a long time, it breaks down into healthy, fertile soil

Includes scraps from nature (cooking, farming, and yard work)

Less waste goes to the landfill, so less landfills are needed

The soil can be used to grow more food

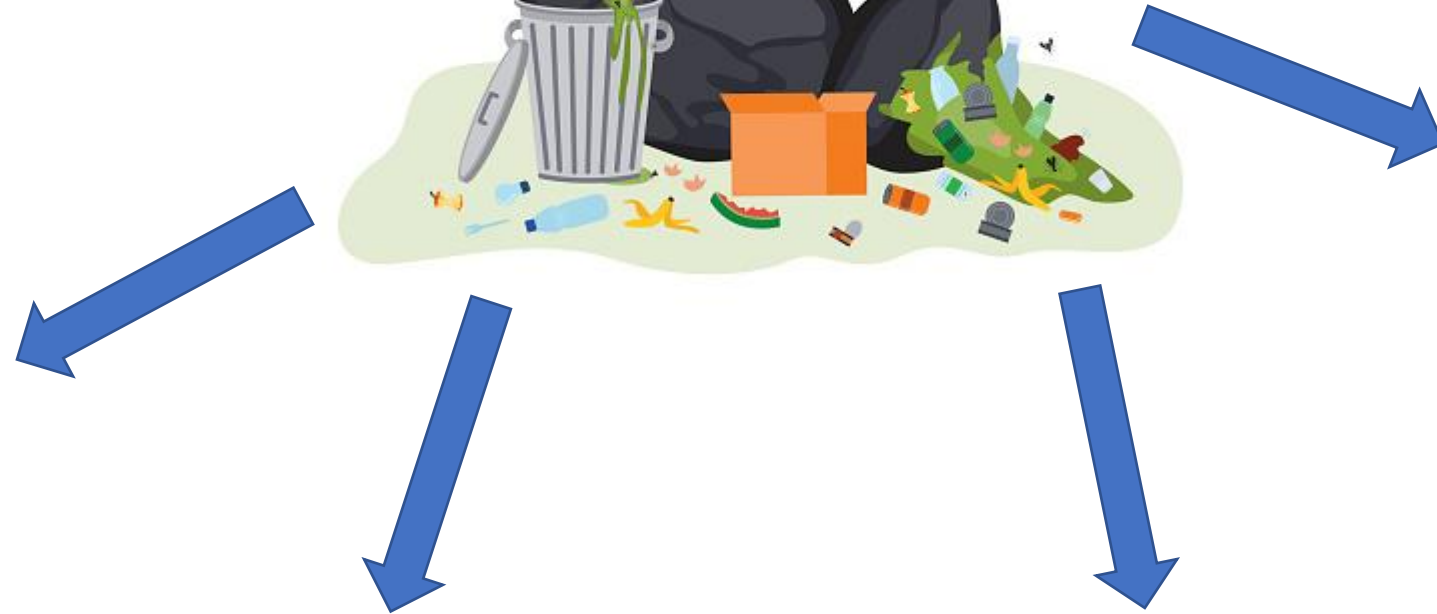
Disadvantage: takes 1 year or more when mixed regularly



TRASH



RECYCLING



NATURE



COMPOST



LANDFILL



# Image Sources

See Lesson Plan for content references

Slide 1 – <http://uspirg.org/blogs/blog/usp/america-has-trash-problem>

Slide 2 - <https://www.dreamstime.com/dirty-garbage-pile-overflowing-smelly-food-waste-plastic-rubbish-black-trash-bags-metal-can-full-junk-isolated-flat-image162697814>

Slide 3 - [https://www.123rf.com/photo\\_29508475\\_stock-vector-trash-can-full-of-rubbish.html](https://www.123rf.com/photo_29508475_stock-vector-trash-can-full-of-rubbish.html)

[https://www.123rf.com/photo\\_117411514\\_trash-can-tin-can-food-and-drink-full-of-cans-on-white.html](https://www.123rf.com/photo_117411514_trash-can-tin-can-food-and-drink-full-of-cans-on-white.html)

<https://evreka.co/managing-of-smart-bin-and-container-collection/>

<https://vinceau.medium.com/dont-talk-trash-about-south-korea-s-waste-management-system-7a11e15ff0e1>

<https://nicholaszahra.wordpress.com/2017/03/06/the-road-is-not-your-trash-can/>

Slide 4 - <https://recyclenation.com/2015/04/out-of-sight-into-landfill/>

<https://www.johnlocke.org/update/laying-waste-to-the-landfill-monopoly/>

Slide 5 - <https://www.texasenvironment.org/plastic-bags-killing-horses-cows-across-state-whats-texas/>

<https://www.dreamstime.com/plastic-bottles-field-environmental-pollution-ecological-disaster-recycling-idea-human-damaging-nature-plastic-bottles-image190751046>

<https://www.cnn.com/2016/07/21/world/turning-plastic-into-fuel/index.html>

Slide 6 - <https://www.pca.state.mn.us/featured/reduce-reuse-and-buy-items-made-recycled-materials>

<https://www.freeimages.com/premium/recycled-plastic-granules-757554>

Slide 7 - <https://www.conserve-energy-future.com/compost-pile-vs-bin.php>

<https://extension.unh.edu/resource/composting-home-gardener-fact-sheet>

<https://www.facebook.com/conectamosvida/about/>

Slide 8 - <https://www.conserve-energy-future.com/compost-pile-vs-bin.php>

<https://www.pca.state.mn.us/featured/reduce-reuse-and-buy-items-made-recycled-materials>

<https://recyclenation.com/2015/04/out-of-sight-into-landfill/>

<https://www.cnn.com/2016/07/21/world/turning-plastic-into-fuel/index.html>

<https://www.dreamstime.com/plastic-bottles-field-environmental-pollution-ecological-disaster-recycling-idea-human-damaging-nature-plastic-bottles-image190751046>