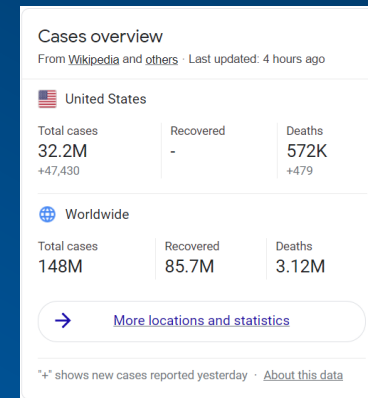
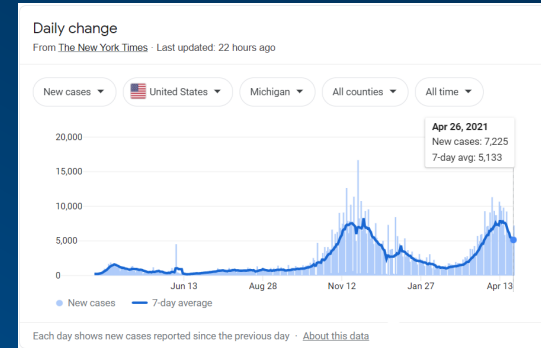


SMU Invents Project Summary



HILLTOP
HYGIENE

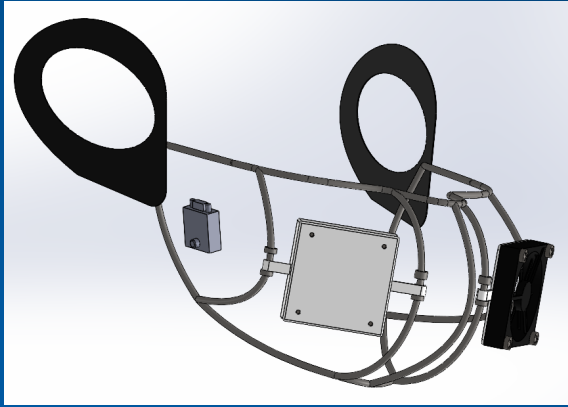
- For over a year, the world has been battling against the spread of SARS-CoV-2
- Masks provide an easy alternative to stop the spread
- SMU invents has striven to design the best mask on the market today by having the most comfortable, best fitting and aesthetic alternative to what is on the market today



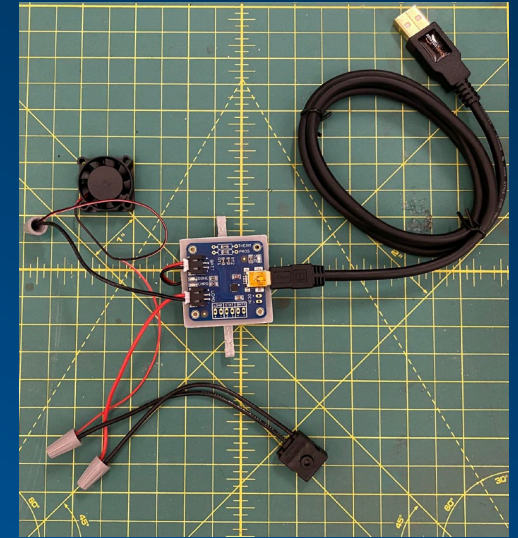
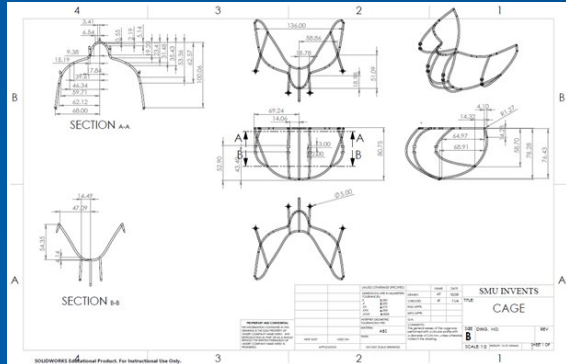
Design Components/ Engineering Specifications



HILLTOP
HYGIENE



- Structure of cage made of ABS(Acrylonitrile butadiene styrene)
- 25mm x 10mm brushless DC Fan
- Lithium-Ion Battery(3.7V, 400mAh)
- SW
- Adafruit LIPO/Li-Ion Charger



Performance Requirements Met



- Mechanical
 - Dome like foundation of mask
 - Prevents "Mask Inhalation"
 - Supports mask hardware
 - Comfortable elastic strap
- Electrical
 - Small fan to provide more air flow
 - >30 mins of battery life for fan
 - Rechargeable battery
 - Ease of access to switch

