



# Welcome to Cockrell-McIntosh Commons

## Faculty-in-Residence Information

Support students by becoming a Faculty-in-Residence (FiR)! SMU faculty members are integrated into the 11 Residential Commons and work with Student Affairs staff and other faculty to facilitate student learning. FiRs provide both formal and informal resident-faculty interactions through educational programming, classes, individual and small-group advising, and casual association. These interactions provide students with opportunities to approach and relate to faculty members on a more personal level, learn about resources, and enhance their confidence and ability to interact with all faculty members.

### Students

- 209 Residents
- 7 Council Positions
- 7 Resident Assistants

### Traditions

- The Cockrell Classic
- Cockrell Culinary Club
- Blvding with the Duhés

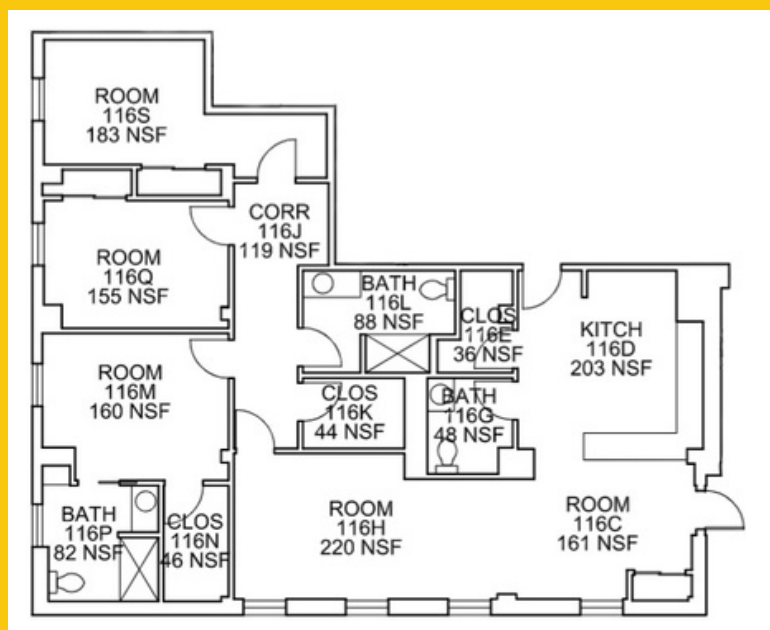
### Contact Info

Dr. Aramis Watson  
Dean of RLSH  
aramisw@smu.edu  
214.768.2407





# Apartment Plan



## Details

- 3 bedrooms
- 2.5 full bathrooms
- ~1,200 square feet
- First floor location
- Exterior and interior entrances
- Large patio
- Large kitchen

# Position Information

**Qualifications:** Full-Time Faculty Status as determined by the Provost, approval from Department Chair and Dean, prior experience engaging students outside of the classroom, interest in the undergraduate residential experience, knowledgeable of general academic requirements, procedures, and campus resources.

**FiR Expectations:** Serve as the intellectual leader of the commons, cultivate new and enhance existing RC Traditions, build relationships with students, be present in the community.

**Specific Responsibilities:** Participate in RA Training and FiR planning days, provide a Welcome Letter, host/facilitate a weekly event, participate in the planning of and attending your commons large scale signature event, participate in Family Weekend, attend all RC Dinners, be present during Move-In Day, attend First Year Convocation, and attend first floor meetings.

**Compensation:** Partially-furnished on-campus apartment, meal plan, up to \$2,500 moving costs, \$4,500 allowance toward living and dining room furniture, \$5,000 compensation OR 1 course load reduction

## Next Steps:

For the full position description and more detailed information, please visit

[www.smu.edu/firrecruitment](http://www.smu.edu/firrecruitment)