



TOPICS



- ◆ ACCOMMODATION LETTERS
- ◆ HDEV 1110- 410
- ◆ DASS OFFICE PROTOCOLS

HDEV 1110: Section 410

Reading and Learning Strategies

Spaces still Available!

- ⇒ Looking to build out your schedule with a low-impact, 1-credit elective that will ease your transition to SMU?
- ⇒ Need a course to satisfy the CC Oral Communication Proficiency?
- ⇒ How about a way to connect with other incoming students with ADHD or Learning Differences?

This 12-week course meets virtually on Tuesdays and Thursdays at 2:00pm, and is designed to improve your reading and learning efficiency and enhance your opportunity for academic success.

HDEV 1110-410 is specifically for students with learning differences and/or ADHD. We consider the challenges and advantages of being a person who learns differently. In class discussions, students share their experiences and the techniques they already use to be successful. In other words, you'll be learning not just from your instructor, but also from each other.

If you have questions or, better yet, if this all sounds good and you want permission to enroll, contact the instructor, David Tylicki, by email at dtylicki@smu.edu or phone (214-768-4773).

SEMESTER REQUESTS = ACCOMMODATION LETTERS

Now is the time to submit a "Semester Request" for the classes you are enrolled in for the fall. Here is the DASS Link login that will take you to your home page:

<https://shibboleth-smu-accommodate.symlicity.com/sso/>

Once on your home page click Accommodation > Semester Request.

This is very important: Review your request by scrolling through every approved accommodation listed and ***only have checked the classes you are going to be enrolled in for the fall.***

2 reasons:

- 1) You only want a letter sent to the professors that will have you in their class.
- 2) It will expediate the approval of your letter being sent to you and your professors.

Very Important:

It is still the student's responsibility to reach out to their instructor and discuss their accommodation needs. Due to the many choices of instruction this semester, remote, F2F, or a mix of both, good communication with your professor will prevent mistakes from occurring with your accommodations.

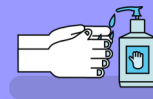
Our office is open and ready to assist our DASS students! Please reach out if you have any questions.

Visiting DASS offices in the LEC ?



Remember to wear a mask at all times. In buildings, hallways, and restrooms.

Social distance of at least 6 ft.



Wash hands frequently or if that is not possible, use the hand sanitizer located all over the campus.

All LEC services are available virtually, and you can schedule to meet with any DASS staff person virtually as well.

Use DASS Link to schedule academic counseling sessions with DASS, or meetings with your Coordinator, if needed. Select "Virtual" for the meeting location.