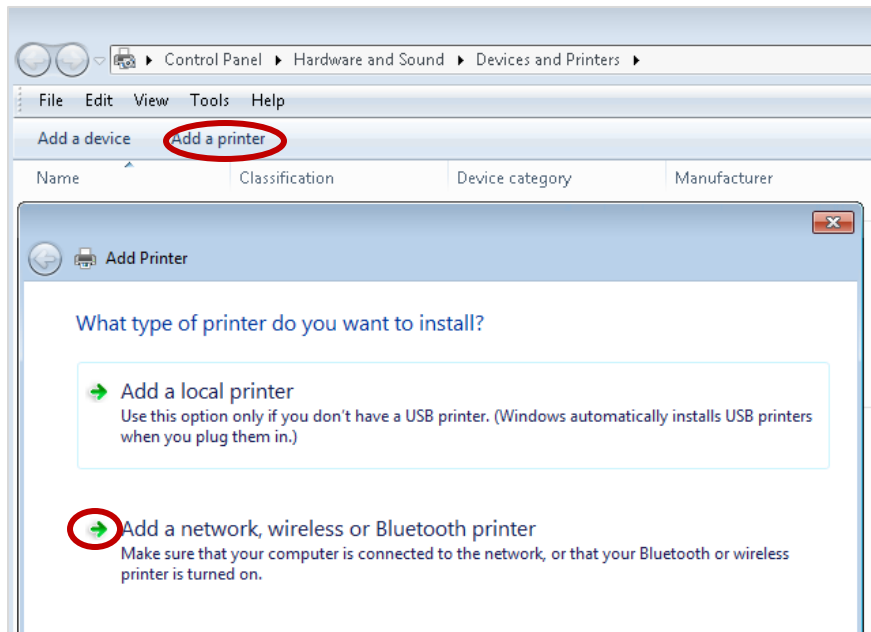


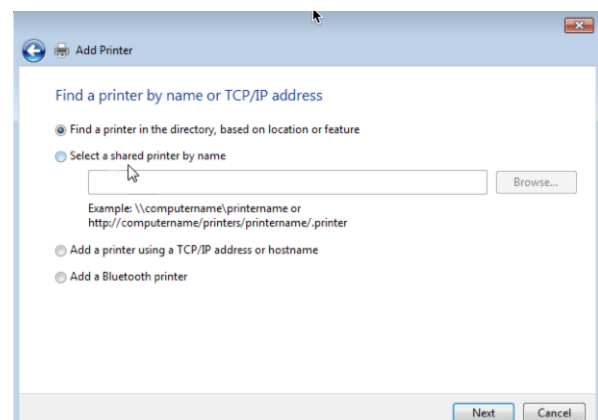
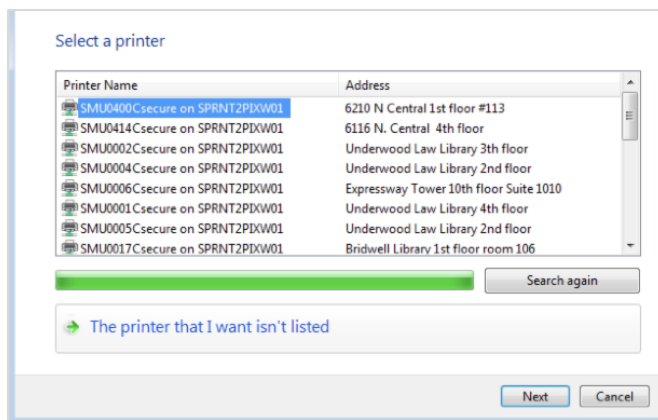
# Installing Paper Cut Secure Release: Windows

1. Begin by navigating to your **Control Panel**, navigate to **Devices and Printers**.
2. Click **Add a Printer**.
3. Click **Add a network, wireless or Bluetooth Printer**.



4. Select the appropriate printer and click **Next**.

**(Note:** If the printer you are trying to add is not available, select **The printer that I want isn't listed**. Next select, **Find a printer in the directory, based on location or feature** and click **Next**.



Then, double-click the printer to add.)

5. You will be prompted to **Install the driver**. Complete the wizard. If this is the printer you regularly use select default.
  6. Select **Print a test page**. A confirmation will display, click **Close**.
  7. Click **Finish**.
  8. At the device, swipe your ID card and release the print job.
- End of Procedure.**

