

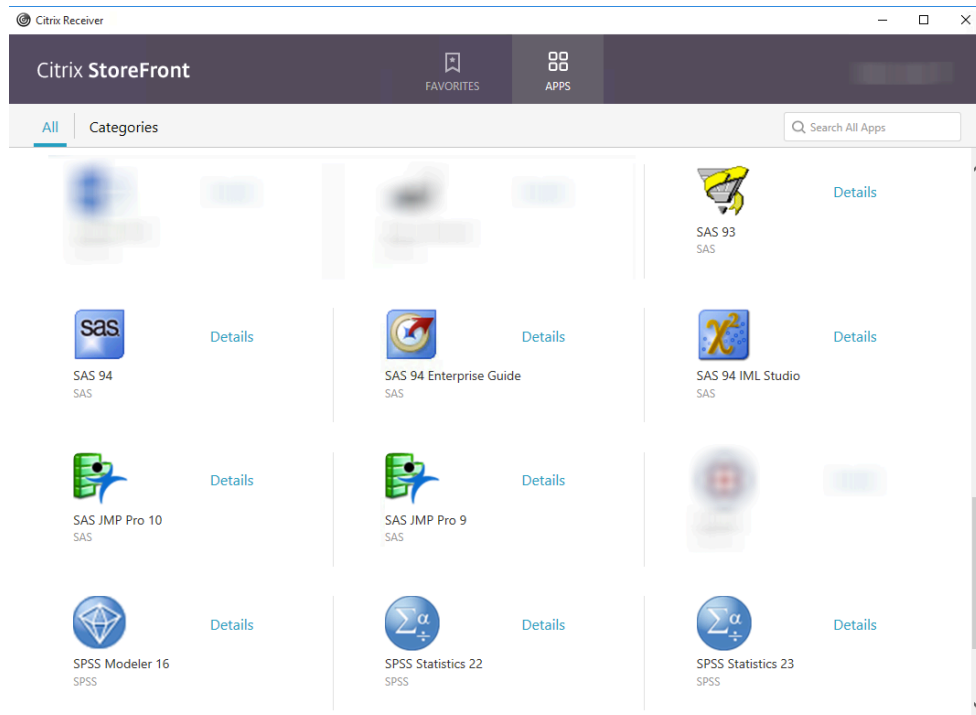


Using SPSS and SAS with Apps.SMU

Although it is not required, installation of [Citrix receiver](#) on your workstation or laptop/notebook, is strongly recommended when using apps. Local installation of Citrix receiver, allows you to access local files, rather than having to save files to a network share for access (although both are an option for saving and accessing files).

Instructions on how to complete the initial setup and other information about Apps.SMU can be found here: <http://www.smu.edu/BusinessFinance/OIT/Services/AppsSMU>

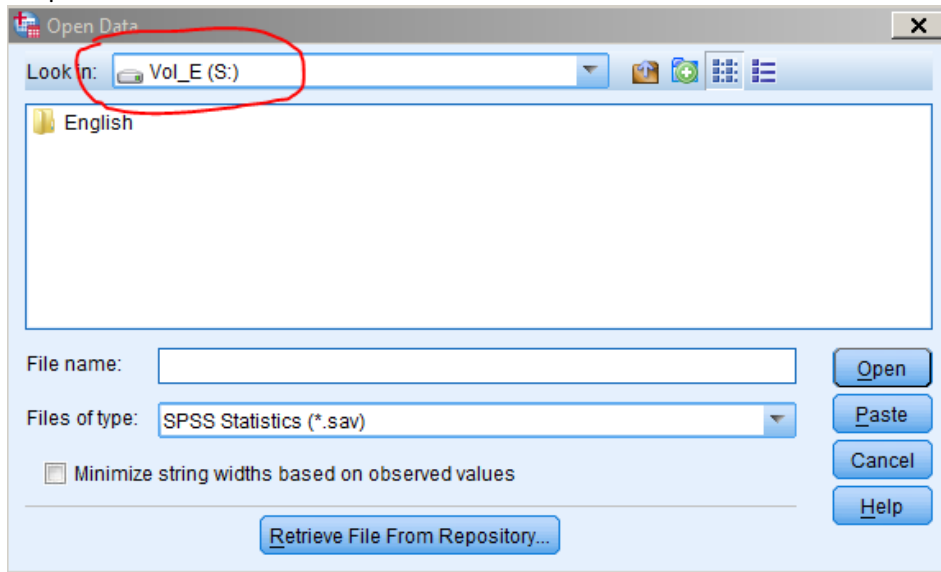
Launch Citrix Receiver and login using your SMU ID & password, then click desired app to open



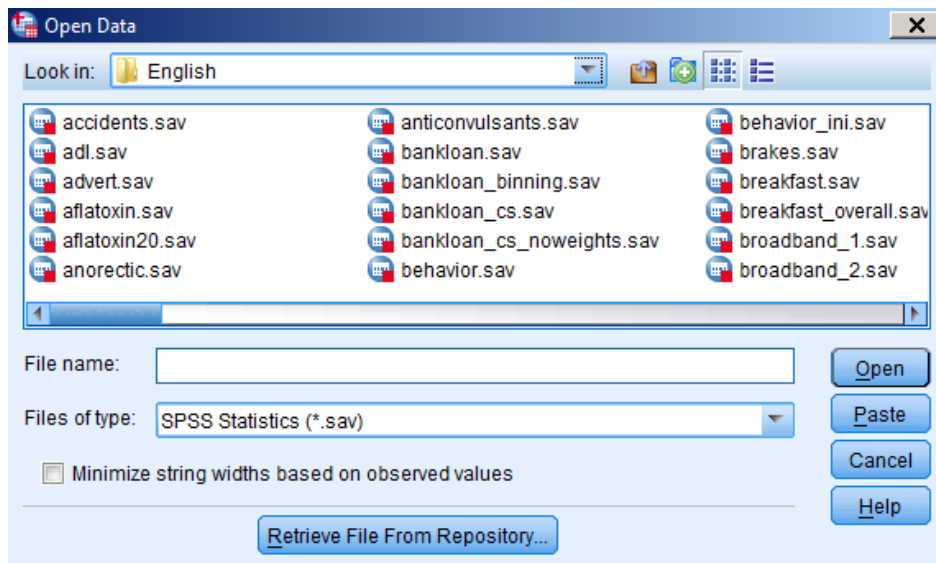


SPSS

To open a sample data set in **SPSS**, choose File, Open, Data. Then select Vol_E(S:) in the *Look in* dropdown list.

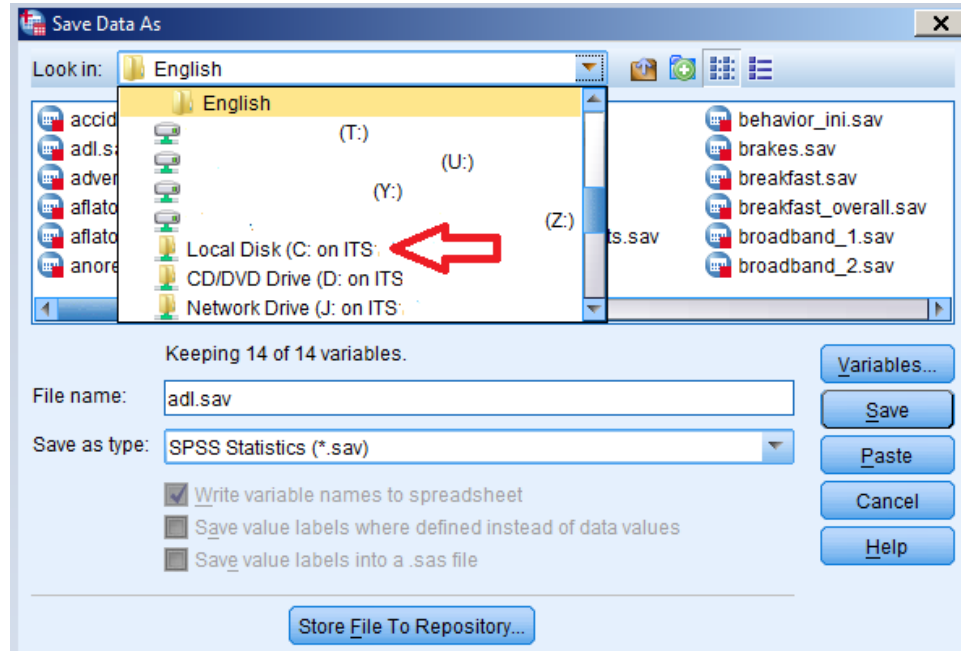


Drill down into the English folder, and you will find the sample data sets.





When saving a data set for SPSS always save it to your local disk, a USB drive, or your SMU home drive (U:\). Choose File, Save As, and then choose the appropriate location from the *Look in* dropdown list. The following example shows how to choose a local hard drive.

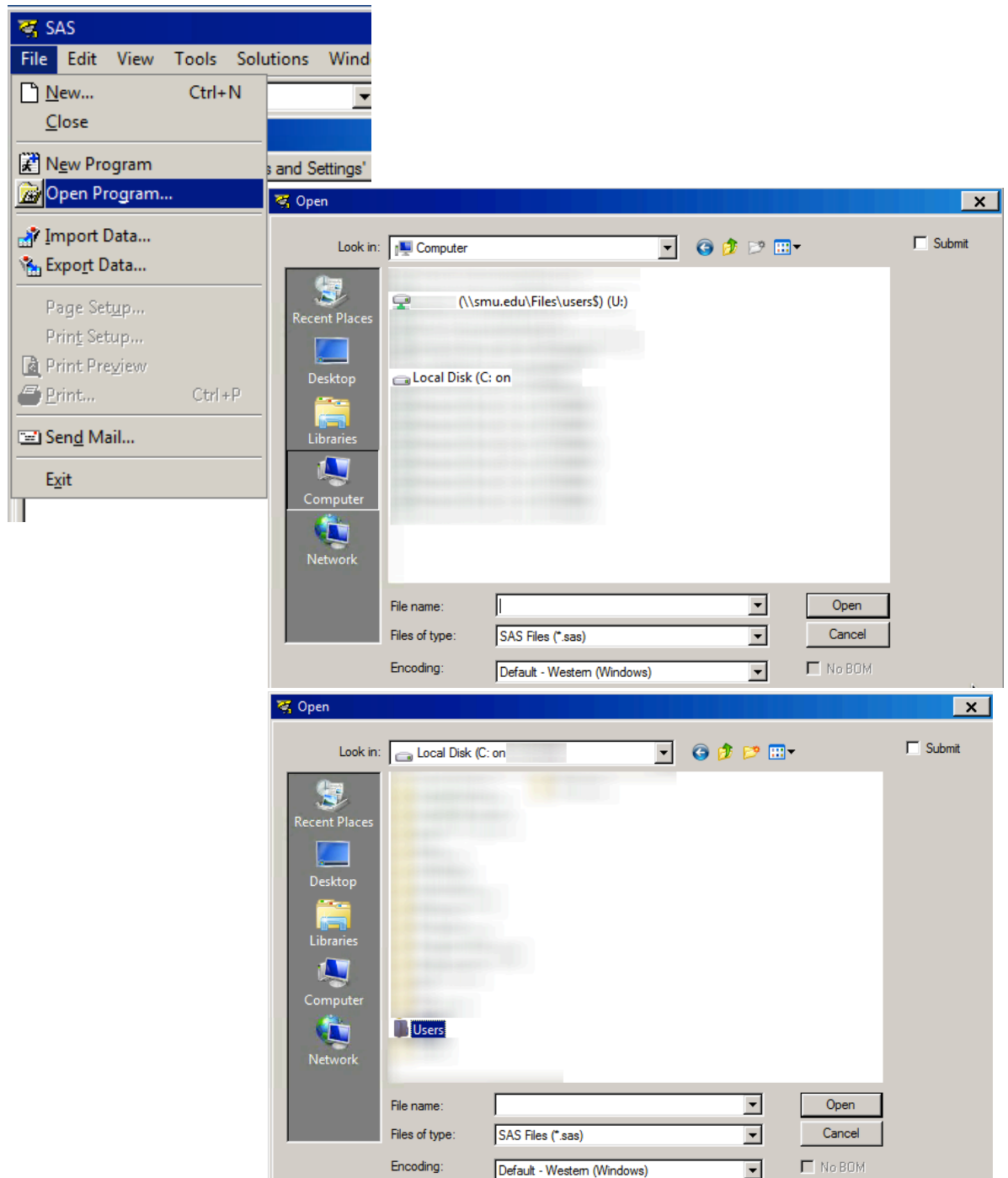


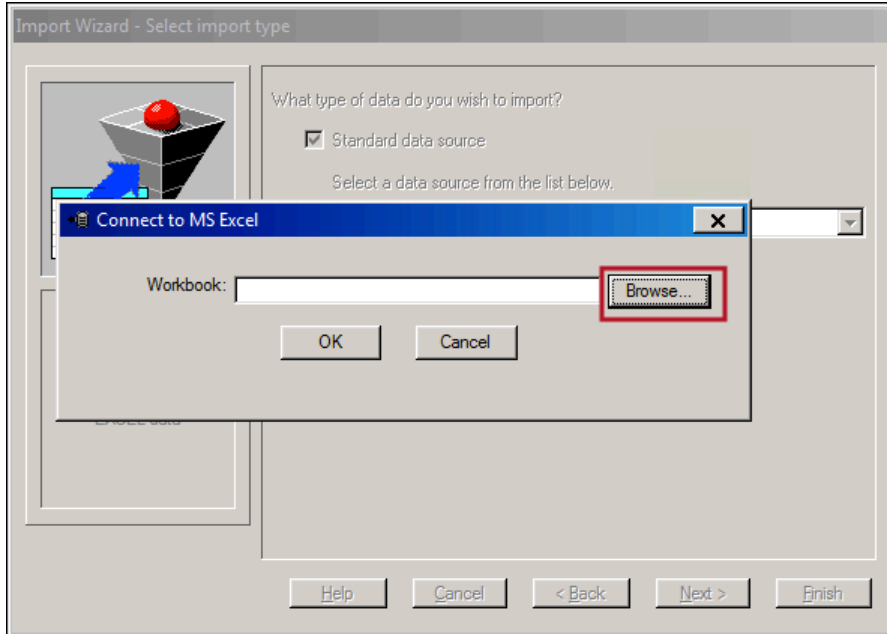


SAS

The same concepts apply to opening programs, importing data, and saving results in **SAS**. Choosing File, Import Data will give you the option to browse to the local disk on which your data set is stored.

Choosing File, Save As will allow you to choose your local disk, USB drive, or SMU home drive (U:\) from the *Save in* dropdown list. Your work should always be saved to one of those options.





When importing data, use the browse option to locate your local files

To save to a specific location or as a specific file type, select File>Save As and browse to the desired directory

