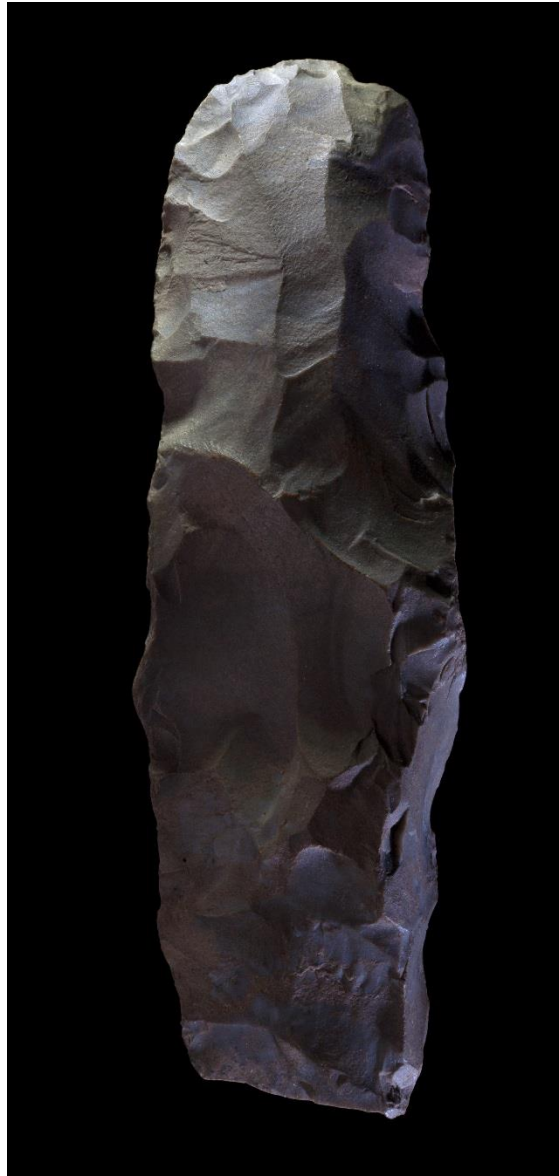


HOMO  
ANTECESSOR



HOMO  
ERECTUS



evolution.  
culture.  
complexity.

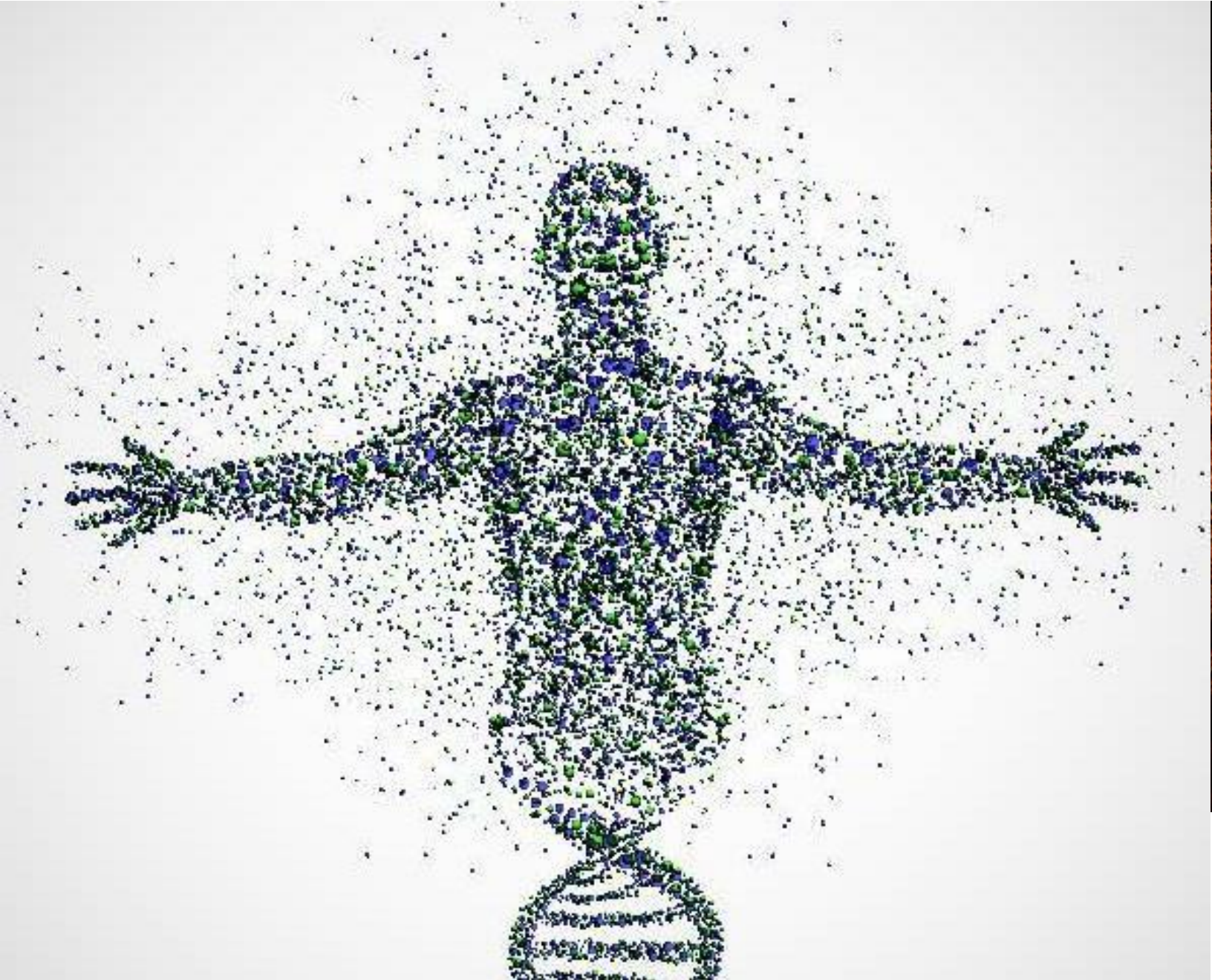
## ANTH 2302

### People of the Earth

May 2020 – MTWTF – 9:00am-1:00pm

When did humans first appear on Earth? How have we changed biologically and culturally over the last 5 million years? When did people settle down, raise crops, forge metal tools, and build cities? This class examines human biological and cultural evolution, from our separation from other apes to the appearance of modern humans in Africa, the spread of people across the globe, to plant and animal domestication, and the rise of the world's great civilizations. ***Satisfies Historical Context Breadth, Human Diversity Proficiency, and Ways of Knowing.***





who.  
are.  
we?

**ANTH 2382**

**Human Nature**

May 2020 – MTWTF – 10:00am-2:00pm

Is there such a thing as human nature? And if there is, how would we recognize it when we see it? Human nature takes an interdisciplinary approach to understanding why humans are the way we are. *Satisfies Natural & Applied Sciences Depth.*



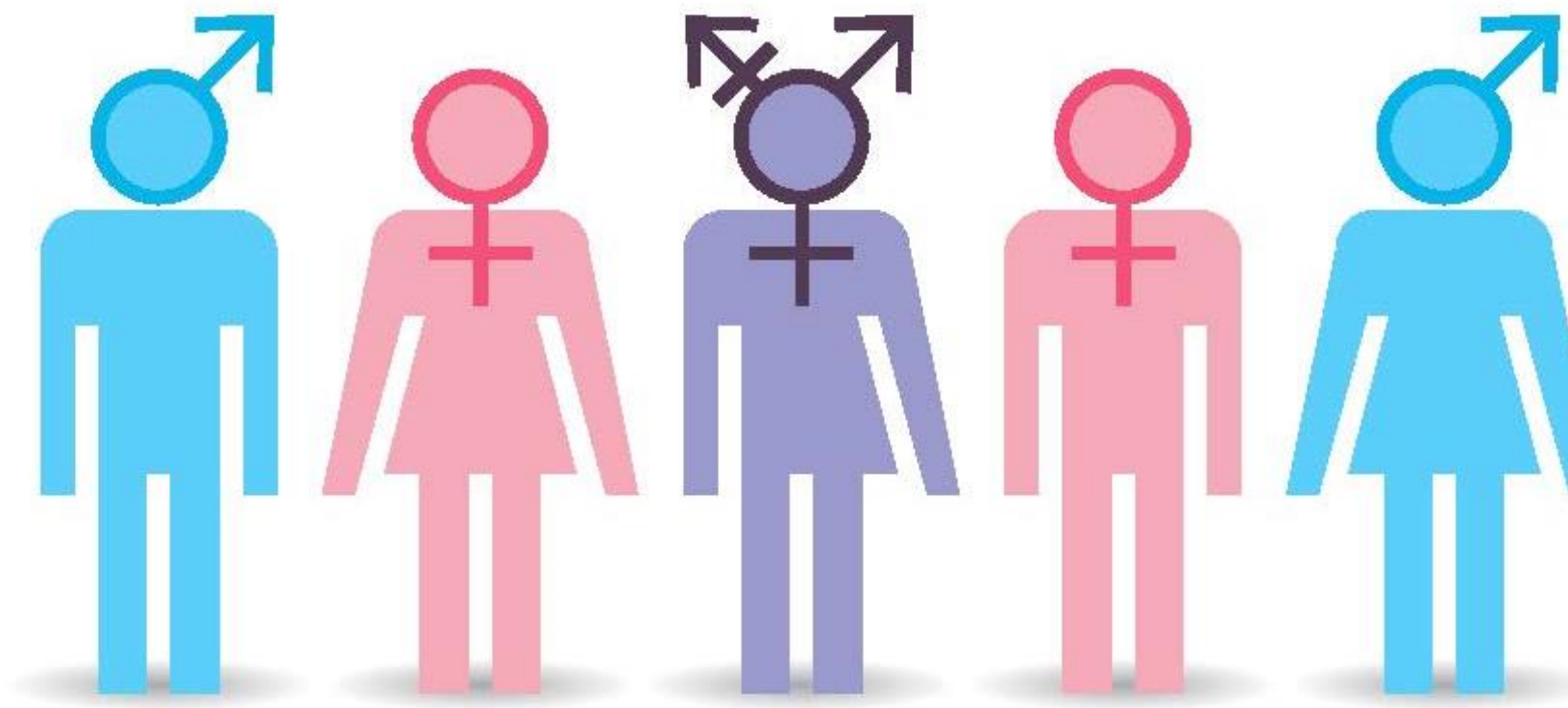
health.  
culture.  
ethics.

**ANTH 3301/SOCI 3301**

**Health, Healing, and Ethics**

May 2020 – MTWTF – 9:00am-1:00pm

A cross-cultural exploration of cultures and organization of medical systems, economic development and the global exportation of biomedicine, and ethical dilemmas associated with medical technologies, and global disparities in health. ***Satisfies Humanities & Fine Arts Depth, History, Social, & Behavioral Sciences Depth, Human Diversity Proficiency, Writing Proficiency, and Global Engagement Proficiency.***



sexuality.  
identity.  
diversity.

## **ANTH 3310**

### **Gender & Sex Roles: A Global Perspective**

May 2020 – MTWTF – 10:00am-2:00pm

Cross-cultural and historical comparison of the life experiences of women and men in the areas of family, marriage and kinship, economic and political participation, sexuality, reproduction, ritual, and religion. ***Satisfies Ways of Knowing, History, Social, & Behavioral Sciences Depth, Information Literacy Proficiency, Human Diversity Proficiency, and Global Engagement Proficiency.***





city-states.  
empires.  
collapse.

**ANTH 3312**

## **Mesoamerican Archaeology**

May 2020 – MTWTF – 9:00am-1:00pm

This course examines development of civilizations from village life to the great empires of Mexico. We will explore specifically how civilizations begin, grow, change, and collapse. *Satisfies History, Social, & Behavioral Sciences Depth, Information Literacy Proficiency, and Human Diversity Proficiency.*



wildfires.  
communities.  
coexistence.

**ANTH 3373**

**Living With Fire: Past, Present, Future**

May 2020 – SMU-in-Taos

Fires in California. Fires in New Mexico. Fires in Texas. Each year, fires seem to get larger, more destructive, and more difficult to manage. How did we get here? What does our future hold? In the unique setting offered by the SMU-in-Taos campus, we will explore the historical and ecological context of the “Fire Problem” and what this history means for our future on a warming planet. ***Satisfies Historical Contexts Breadth and Oral Communications Proficiency.***





food.  
evolution.  
markets.

## ANTH 3350

### Good Eats & Forbidden Flesh

June A 2020 – MTWTF – 9:00am-1:50pm

Offers bio-cultural perspective on food that blends biological and medical information about human nutrition and development with an exploration of the global markets and cultures of eating. Prerequisites: Advanced standing and ANTH 2301, or permission of instructor for non-anthropology majors. ***Satisfies Individuals, Institutions, and Cultures Breadth, Human Diversity Proficiency, Information Literacy Proficiency, Global Engagement Proficiency, and Community Engagement Proficiency.***





resilient from.  
the 16<sup>th</sup> century.  
to the present.

**ANTH 3358**

**Native Americans of the Southwest**

June B 2020 – MTWTF – 9:00am-12:50pm

An introduction to the non-Pueblo and Pueblo peoples of the Greater Southwest, with a focus on Indian-Indian and Indian-Euroamerican relations and the resultant transformations. Topics include the clash of cultures, tourism, gambling, legal rights, and urbanism. ***Satisfies History, Social, & Behavioral Sciences Depth and Human Diversity Proficiency.***





archaeology.  
indigenous.  
field research.

## **ANTH 5381**

### **Field Methods in Archaeology**

June 2020 – SMU-in-Taos

Methods of excavation, recording, and interpretation used in archaeological research. Students may petition to have this course fulfill the lab science requirement. At SMU-in- Taos, Fort Burgwin Research Center. ***Satisfies Community Engagement Proficiency, Human Diversity Proficiency, Information Literacy Proficiency, and Writing Proficiency.***





social.  
health.  
healing.

## **ANTH 3306**

### **Introduction to Medical Anthropology**

July B 2020 – MTWTF – 10:00am-1:50pm

Provides an overview of methods and topics in medical anthropology, an interdisciplinary field that explores health, illness, and systems of healing through holistic and cross-cultural study. Case studies from a diversity of human societies and cultures around the globe are used to challenge assumptions of student understanding. Gives students a robust introduction to this specialized sub-field within Anthropology and addresses many of the foundational concepts on the MCAT. ***Satisfies History, Social, & Behavioral Sciences Depth, Human Diversity Proficiency, Oral Communication Proficiency, and Information Literacy Proficiency.***





lost tribes.  
sunken continents.  
ancient astronauts.

## **ANTH 3334**

### **Fantastic Archaeology & Pseudoscience**

August 2020 –SMU-in-Taos

Investigates various claims (e.g., ancient astronauts have visited Earth, archaeologists are not revealing secrets about the Maya calendar, and creation theory is a scientific alternative to the theory of human evolution) and how archaeologists respond to them.

***Satisfies Humanities & Fine Arts Depth, History, Social, & Behavioral Sciences Depth, Human Diversity Proficiency, Information Literacy Proficiency, Oral Communication (Honors sections only) Proficiency, and Writing Proficiency.***