



humanity.
diversity.
culture.

ANTH 1321

Anthropology: A Four-Field Approach

Fall 2020 – TTh – 8:00-9:20am

What is anthropology? This course introduces students to the four subdisciplines of anthropology: sociocultural anthropology, linguistics, archaeology, and biological anthropology. Come explore different global cultures, languages, and biological diversity around the world. As part of this journey, we investigate ancient cultures and the evolution of humankind. In this class, we learn through a series of hands-on learning assignments, in-class activities and discussions, as well as writing assignments. ***Satisfies Individuals, Institutions, & Cultures Breadth and Writing Proficiency.***



global.
cross-cultural.
relevant.

ANTH 2301

Introductory Cultural Anthropology

Fall 2020 – MWF – 12:00-12:50pm

How do people live around the world? What are different societies like? This course explores variations in different cultures around the world with regard to cultural values, social practices, religion, rules of law, kinship, etc. We focus on understanding the forces that shape cultures and societies and how groups adapt to a rapidly changing world.

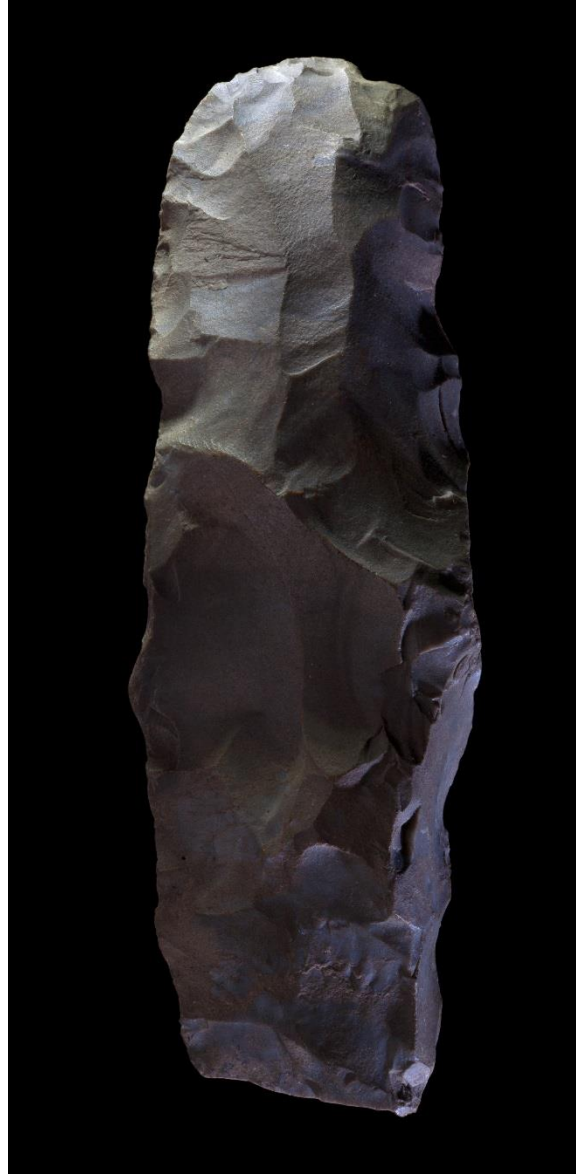
Satisfies Individuals, Institutions, and Cultures Breadth and Human Diversity Proficiency.



HOMO
ANTECESSOR



HOMO
ERECTUS



evolution.
culture.
complexity.

ANTH 2302

People of the Earth

Fall 2020 – TTh – 11:00am-12:20pm and 3:30-4:50pm

When did humans first appear on Earth? How have we changed biologically and culturally over the last 5 million years? When did people settle down, raise crops, forge metal tools, and build cities? This class examines human biological and cultural evolution, from our separation from other apes to the appearance of modern humans in Africa, the spread of people across the globe, to plant and animal domestication, and the rise of the world's great civilizations. ***Satisfies Historical Context Breadth, Human Diversity Proficiency, and Ways of Knowing foundation.***



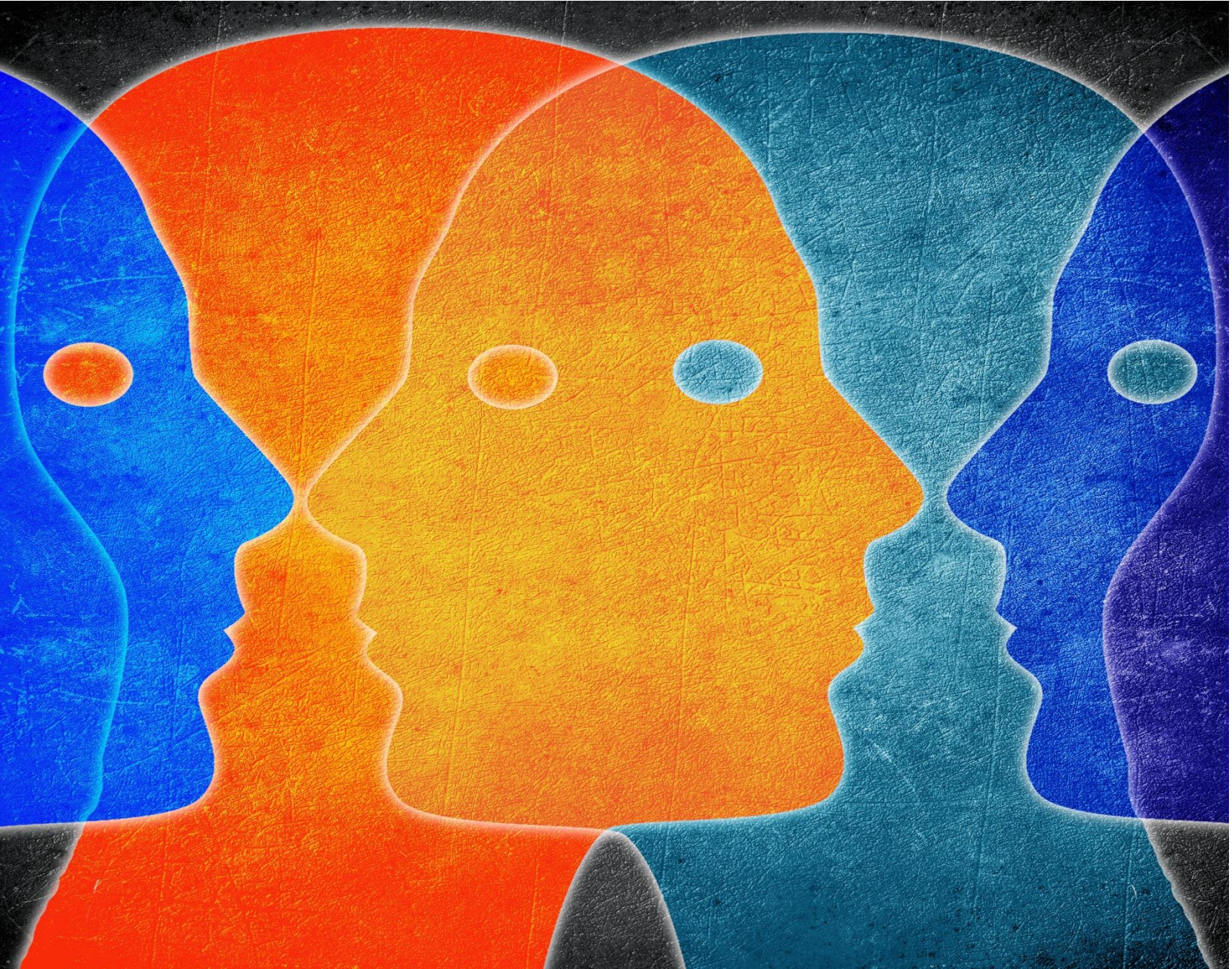
our.
material.
lives.

ANTH 2463

The Science of Our Past: Introduction to Archaeology

Fall 2020 – TTh – 12:30-1:50pm

How do scientists study human societies and ancient civilizations? What types of evidence do they use? What do their findings indicate about how people lived in the past? This class examines how and why archaeologists study evidence of past human behavior. We will learn through lecture, videos, as well as hands-on labs that emphasize analyses and interpretations of artifacts and other archaeological materials. ***Satisfies Science and Engineering Breadth, Historical Context Breadth, and Information Literacy Proficiency.***



self.
culture.
mind.

ANTH 3303

Introduction to Psychological Anthropology

Fall 2020 – MWF – 9:00-9:50am

Examines the interplay of self, culture, and mind in various Western and non-Western societies. Cognition, emotion, altered states, “brain sciences,” and mental health and illness are analyzed through a comparative, cross-cultural perspective. ***Satisfies History, Social, & Behavioral Sciences Depth, Human Diversity Proficiency, Information Literacy Proficiency, and Global Engagement Proficiency.***



our.
national.
heritage.

ANTH 3304

North American Archaeology

Fall 2020 – TTh – 9:30-10:50am

When did people first come to this continent? What were indigenous American societies like? In this class, we examine North America's human past from the earliest colonization by Ice Age peoples, to the colonization of the continent by their descendants, to the clash of cultures that followed the arrival of Europeans in 1492. ***Satisfies History, Social, & Behavioral Sciences Depth and Information Literacy Proficiency.***



social.
health.
healing.

ANTH 3306

Introduction to Medical Anthropology

Fall 2020 – TTh – 8:00-9:20am

Provides an overview of methods and topics in medical anthropology, an interdisciplinary field that explores health, illness, and systems of healing through holistic and cross-cultural study. Case studies from a diversity of human societies and cultures around the globe are used to challenge assumptions of student understanding. Gives students a robust introduction to this specialized sub-field within Anthropology and addresses many of the foundational concepts on the MCAT. ***Satisfies History, Social, & Behavioral Sciences Depth, Human Diversity Proficiency, Oral Communication Proficiency, and Information Literacy Proficiency.***



society.
resources.
uncertainty.

ANTH 3319

Humanity & Global Environmental Change

Fall 2020 – TTh – 12:30-1:50pm

This class examines interactions between human populations and their environments. We will explore relationships among population size, technology, climate, and behavior in living societies worldwide. Particular attention will be given to understanding the environment and current environmental problems, such as water scarcity, disasters, air quality, food, and waste. ***Satisfies History, Social, & Behavioral Sciences Depth, Information Literacy Proficiency, and Global Engagement Proficiency.***



lost tribes.
sunken continents.
ancient astronauts.

ANTH 3334

Fantastic Archaeology & Pseudoscience

Fall 2020 – TTh – 8:00-9:20am

Investigates various claims (e.g., ancient astronauts have visited Earth, archaeologists are not revealing secrets about the Maya calendar, and creation theory is a scientific alternative to the theory of human evolution) and how archaeologists respond to them. ***Satisfies Humanities & Fine Arts Depth, History, Social, & Behavioral Sciences Depth, Human Diversity Proficiency, Information Literacy Proficiency, and Writing Proficiency.***



food.
evolution.
markets.

ANTH 3350

Good Eats & Forbidden Flesh

Fall 2020 – TTh – 9:30-10:50am

Offers bio-cultural perspective on food that blends biological and medical information about human nutrition and development with an exploration of the global markets and cultures of eating. Prerequisites: Advanced standing and ANTH 2301, or permission of instructor for non-anthropology majors. ***Satisfies Individuals, Institutions, and Cultures Breadth, Human Diversity Proficiency, Information Literacy Proficiency, Global Engagement Proficiency, and Community Engagement Proficiency.***



evidence.
discovery.
bones.

ANTH 3351

Forensic Anthropology: Stories Told by Bone

Fall 2020 – TTh – 11:00am-12:20pm

Students learn to identify human remains, estimate sex, stature, age, and ethnicity of individuals from bones. We learn how to recognize pathology, trauma, other causes of death, as well as conditions of preservation and decay. The medico-legal problems in accomplishing this, as well as the methodology used in field and laboratory, constitute a worthy study for all students who wish to gain an appreciation for the cross-disciplinary contributions of biology, anthropology, archeology, genetics, geology, pathology, ethics, and law. ***Satisfies Natural & Applied Sciences Depth.***



identity.
conflict & consensus.
immigrants.

ANTH 3355

Society & Culture in Contemporary Europe

Fall 2020 – MWF – 11:00-11:50am

This course provides an anthropological survey of the social and cultural dimensions of contemporary European society. We will explore unity and diversity within the region, and the role of gender, religion, class, migration, ethnicity, and nationalism in structuring the lives of Europeans. ***Satisfies History, Social, and Behavioral Depth, Human Diversity Proficiency, and Global Engagement Proficiency.***



how.
do we.
communicate?

ANTH 3361

Language in Culture & Society

Fall 2020 – MWF – 4:00-4:50pm

In this course, we undertake an investigation of social and cultural factors that affect uses of language. Topics include linguistic variation, Black English, women's language, as well as body language.



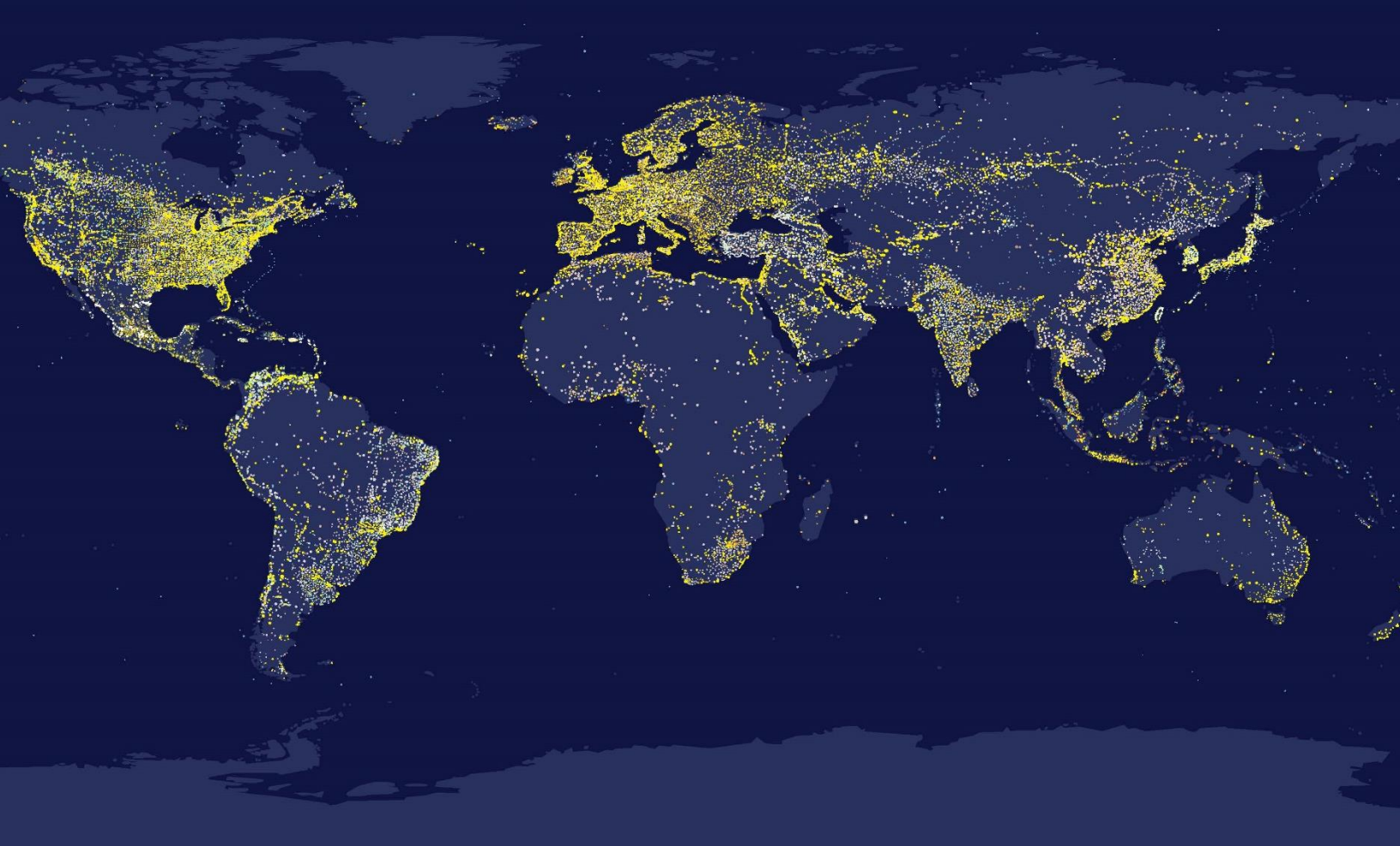
diversity.
belief & practice.
healing.

ANTH 3366/RELI 3366

Magic, Myth, & Religion Across Cultures

Fall 2020 – MWF – 2:00-2:50pm

A cross-cultural and comparative exploration of religion, ritual, magic, and supernatural belief systems. Examines how religion permeates other aspects of society and culture. *Satisfies Humanities & Fine Arts Depth, History, Social, & Behavioral Sciences Depth, and Global Engagement Proficiency.*



cities.
urban.
space.

ANTH 3368/SOCI 3368 **Global Urbanism**

Fall 2020 – TTh – 12:30-1:50pm

An introduction to urban life and culture around the world, including how to study cities, who inhabits cities, and the special features of city places and spaces. ***Satisfies Global Engagement Proficiency, Information Literacy Proficiency, and Writing Proficiency.***



people.
nature.
resilience.

ANTH 3385

Sustainable Living

Fall 2020 – MWF – 12:00-12:50pm

How can we face the human-environmental challenges we face in the 21st Century? How can we sustain our societies and the natural environments that support them? We need to recognize that human societies and the natural world are deeply interconnected and that we can only understand these challenges by understanding them as interconnected systems. *Sustainable Living* provides an introduction to systems thinking and ecological resilience for sustainability challenges across cultures and environments. ***Satisfies the Information Literacy Proficient, Oral Communication Proficiency, and Ways of Knowing foundation.***



**UN declarations.
world order.
lifeways.**

ANTH 4309/HRTS 4309

Human Rights, Indigenous Peoples, and Nation States

Fall 2020 – TTh – 2:00-3:20pm

An examination of human rights issues among contemporary indigenous peoples, especially the impact on their cultures and societies from governmental and nongovernmental organizations, large-scale development programs, and global tourism.



infrastructure.
technology.
connection.

ANTH 4350/6332

Special Topics in Anthropology: Build It, Hack It, Fix It

Fall 2020 – T – 2:00-4:50pm

Infrastructures connect people, places, ideas, and resources (think: water, transportation, and communication systems). This class draws on issues in anthropology, environmental studies, and infrastructure studies/STS to examine the politics and impacts of infrastructures, especially related to social difference and resource access. The course covers the relationships between environments and infrastructures, and asks how we can manage these systems in the Anthropocene. Themes include materiality, sociotechnical systems, cities, communication technologies, differential access to resources, roads/transits, water, energy, maintenance & repair, and nature as infrastructure. The course asks you to look at infrastructure as politics, and to become more attuned to the webs that we rely on in day-to-day life.



exchange.
development.
value.

ANTH 4384/6384

Political Economy: Global Processes and Problems

Fall 2020 – M – 2:00-4:50pm

An exploration of foundational concepts in political economy, and topics such as globalization and development. Readings include classical texts and contemporary ethnography to understand how scholars conceptualize the politico-economic domain and how human actors animate it.



**anthropology's.
disciplinary.
origins.**

ANTH 5334

History of Anthropology, Part 1

Fall 2020 – T – 2:00-4:50pm

Analytical history of anthropology from the Classical period to the 20th century. Explains the content and development of theory, method, and interpretation.



health and illness.
culture.
perspective.

ANTH 5336

Health in Cross-Cultural Perspective

Fall 2020 – W – 2:00-4:50pm

Cross-cultural study of the cultural construction and social organization of medical systems in preindustrial and industrialized societies, including the political economy of health, ethnomedicine, international health, ethnopharmacology, and bioethics. Prerequisites: ANTH 3301, ANTH 3306 or approval of instructor.