

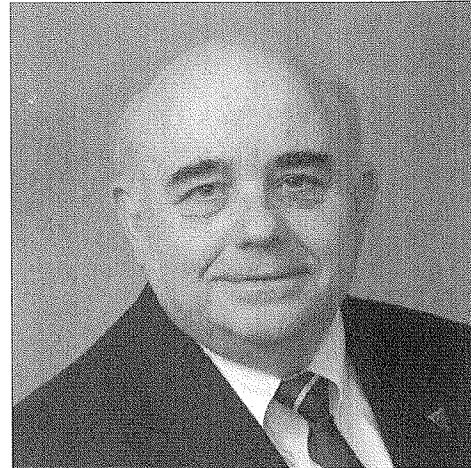
2010 Engineer of the Year



Ivan Nicodemus, PE American Society of Civil Engineers Dallas Branch

Ivan Nicodemus is an assistant vice president for PB Americas, Inc. He has been with PB for over 20 years. Ivan began his career in the US Air Force as an instructor pilot in the T-38 and KC-135. Upon returning to the US from Europe, Ivan joined Huitt-Zollars and was part of the team preparing DART's first service plan. Ivan returned to the skies, flying 757s for Eastern Airlines, before joining Parsons Brinckerhoff as the infrastructure design manager for the Super Conducting Super Collider. He subsequently worked on a variety of program management projects for Dallas County and for DFW Airport during its capital development program. Ivan currently is PB's construction area manager, participating in the successful Design-Build efforts for the DFW Connector, the DART Blue Line, and, most recently, as part of the CM at Risk team with Balfour Beatty at DFW Airport.

Ivan received his BS in civil engineering from SMU in 1972 and his MS in mechanical engineering from Boston University in 1984. He has served the engineering community through ASCE as president, treasurer, and section director.



Additionally, he has served SMU as the chair of the Advisory Board for SMU's department of civil and environmental engineering and has been an advisor to the ASCE Student Chapter. Ivan also was a scoutmaster.

Ivan and his wife, Becky, a vice president with AH Belo, live in Carrollton. They have two sons and four grandchildren who all reside in the greater Dallas area.