



SMU | STUDENT  
AFFAIRS

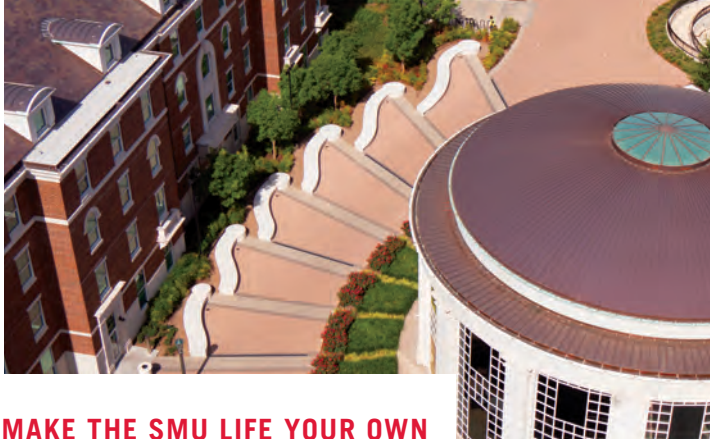
# *Welcome* TO YOUR NEW *home*





# *Welcome* TO SMU LIVING

At SMU, we've transformed residential life for students through our Residential Commons, which integrate the academic, residential and social experience. Living in one of the 11 on-campus Residential Commons during your first two years at SMU, you'll find it's easier to make friends and transition smoothly to University life in a supportive environment. Living and interacting with students from across the United States and the world enriches you and prepares you to be a world changer in today's global society. Our Residential Commons thrive on the individual perspectives, skills and talents of every student resident.



## MAKE THE SMU LIFE YOUR OWN

***University life in your Residential Commons is centered on your personal growth and exploration, expanding your view of the world and your place in it.*** You'll be challenged by new experiences and learn more about yourself, others and the world around you.

The Residential Commons at SMU are more than just on-campus housing – they are a vital part of the University's academic mission. Each Commons fosters an academically focused community of students from every major and background, from all over the country and around the world. Living among such diverse neighbors is a learning experience in itself. From conversations with your Faculty in Residence (FiR) who lives down the hall to cultural activities and community service projects with your neighbors, living in a Commons will fuel your desire to learn. Your Commons will support your education with easy access to classrooms in or near your building. And you can get advice or just chat with faculty and staff who live and work in your Commons. You'll also join the ranks of the next generation of world changers and leaders by serving on Commons Councils, volunteering and exploring other service opportunities in your Commons.

## LEARNING HAPPENS EVERYWHERE

***Your interactions and learning experiences outside class are an important part of the whole college experience.*** To this end, each Commons has a team of faculty and staff who work together to create a community with an academic focus and social opportunities. The team includes a live-in faculty member (called a Faculty in Residence or FiR), a Residential Community Director (RCD) as well as Resident Assistants (RAs).

The Faculty in Residence are SMU professors who live in their Commons and serve as the intellectual leaders in the community. FiRs help elevate the intellectual environment by hosting events and participating in impromptu discussions. A true member of the community, the FiR lives and works in the Commons.

The Residential Community Director is a full-time professional with a master's degree who is experienced in residence hall living and student life issues. Your RCD is responsible for the overall management of your Commons, including supervising the Resident Assistant staff, coordinating programs, supervising student conduct and advising the Commons Council.

Each residential community is staffed by Resident Assistants – usually one RA per floor. RAs are students who work to foster a sense of community. They are valuable resources for help in problem solving, conflict mediation and your transition to the University, or just to listen when you need to talk. They coordinate social and educational programs, facilitate Commons and campus involvement and assist with the overall management of your Commons.



**Aanika Gupta '22, Virginia-Snider Commons**  
Majors: Health and society, psychology  
Minor: Cognitive science

***“I love living in a community that feels like home. As president of my Commons, I am learning how to effectively work with others and that being open to new friendships is the best way to find friends for life!”***

***“My family and I are excited about meeting our residents, having conversations and sharing our experiences. My wife and I met in college. During the time we have known each other, we have learned that life is best lived when exposing yourself to new ideas and experiences. Embrace the unfamiliar. We hope to encourage our residents to do the same.”***



**W. Keith Robinson, Faculty in Residence,  
Kathy Crow Commons**  
Altshuler Distinguished Teaching Professor  
Co-director, Tsai Center for Law  
Science and Innovation and Associate Professor of Law  
Dedman School of Law

## HOME BASE FOR LEADERSHIP

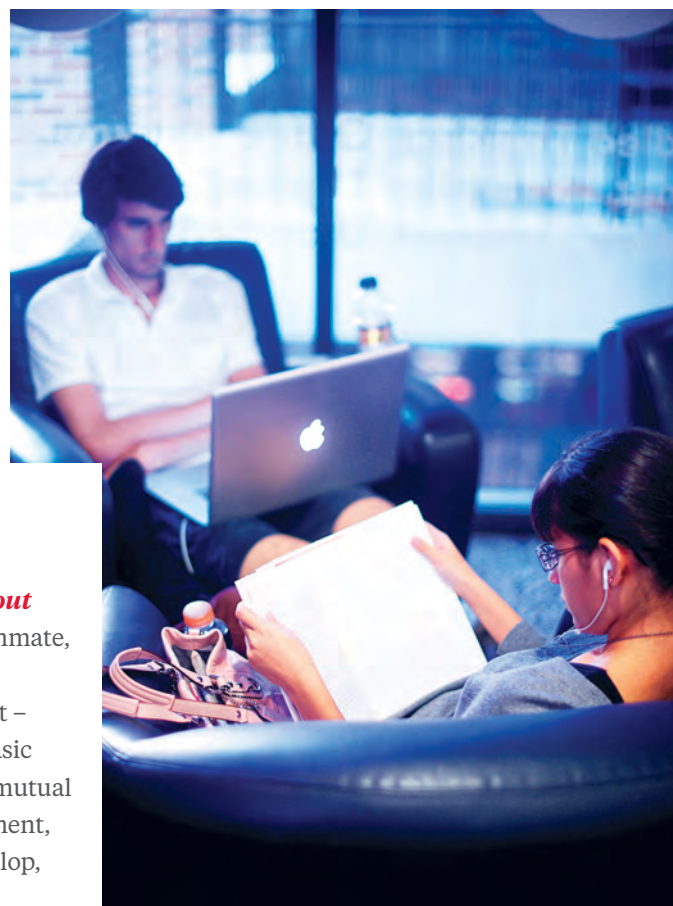
***Each Residential Commons has a Commons Council to help coordinate activities for residents.*** Most Commons Councils have committees that work with the Faculty in Residence to help build a strong sense of belonging within the Residential Commons. By serving on a committee, you can help plan and enjoy a variety of group activities, such as the Residential Commons Games, Commons banquets and cultural events.

The Housing Unification Board (HUB) is the umbrella organization that represents all students living in SMU

Residential Commons and upperclass residence halls. Through The HUB, SMU seeks student input on decisions and issues important to campus life, including policy changes, facility improvements and other ways to enhance on-campus living.

Serving on your Commons Council and The HUB is a great way to get involved and actively enhance the quality of your residential experience. Leadership in your Commons will help lay a foundation for involvement and leadership in other student activities and make a difference in your home away from home.





## SHARED SPACES

***Sharing your living space with another student can teach you about yourself and others.*** In some cases, you may already know your roommate, but in most cases you won't. "Roommate anxiety" is something we understand, and we'll work with you to get things off to a positive start – like completing a Roommate Agreement, which walks you through basic living issues you'll encounter and guides you to an understanding of mutual expectations. Most rooming arrangements require a period of adjustment, and we find that, in time, friendships among roommates usually develop, and many of those friendships evolve into lifelong connections.



Alicia Swart '20, Loyd Commons  
Majors: Finance, French  
Minor: Anthropology (archaeology track)

*“My Commons is where I find my SMU family – I know that **I will always have somewhere I belong.** My educational goals have expanded because of the many amazing opportunities in my Commons.”*

## HOUSE RULES

***SMU works collaboratively with students to create and maintain an atmosphere that promotes academic success, personal growth and social awareness.*** Safety and security are shared responsibilities among residents and the University. Strong communities require the participation and cooperation of every resident. As a member of your community, you assume responsibility for what you do. In the interest of all residents, rooms are inspected each term for fire safety and maintenance standards. To enhance security, our Residential Commons have electronic entry systems. You can access your building only by using your encoded SMU ID card at the electronic reader at the building's entrance. Residential policies require that guests be escorted by their hosts at all times. As a member of the residential community, you assume responsibility for what you do, including showing courtesy to others and respect for property in SMU residential facilities. Our policies are available online and outline reasonable expectations of conduct. We trust that you will make choices that promote a strong community and uphold these standards. Those who do not will be held accountable for their actions and could be removed from on-campus housing.

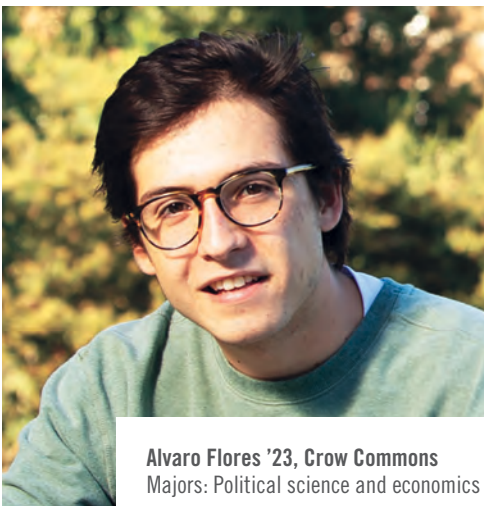
## THE HOME STRETCH

***SMU's Residential Commons create a meaningful community experience for students, with a particular focus on the first two years on campus.*** Upperclass students also remain linked to their Commons, no matter where they live, and can participate in academic programs, community service and social events. Thus, first-years and sophomores can benefit from the wisdom of their upperclass mentors. At SMU, the close-knit community you establish during your first two years on campus will enhance your entire college experience.

## MUTUAL RESPECT

***The University welcomes a heterogeneous population that includes a variety of backgrounds, beliefs, nationalities and cultures.*** Roommates are not assigned or reassigned according to race, color, religion, national or ethnic origin, age, sexual orientation or disability.





Alvaro Flores '23, Crow Commons  
Majors: Political science and economics

*“The best thing about the Residential Commons is that it **instantly connects you with other students** in the same Commons. Don’t be afraid to knock on your neighbors’ doors in order to get to know them. Your neighbors will **become some of your closest friends** who will support and help you throughout the year.”*

# Faculty

## BEYOND THE CLASSROOM



**David and Heidi Son and their children, Geoffrey and Kaylee,** have settled in comfortably as the Faculty in Residence (FiR) family in Boaz Commons, one of 11 undergraduate living facilities in SMU's Residential Commons.

***Life as one of SMU's 11 Faculty in Residence (FiR) is never dull.*** Just ask David Son, Associate Provost for Curricular Innovation and Policy *ad interim* and a professor of chemistry in Dedman College, and his wife, Heidi – or take a look at photos and memories from a year at Boaz Commons. In 2014, David Son was named Boaz FiR, and the 61-year-old residence hall was retrofitted with an apartment that houses the couple and their children, Geoffrey, 16, and Kaylee, 13. The Sons believe so strongly in the Residential Commons model for living and learning at SMU that they sold their home in Plano to move to campus. And they say they've never looked back.

Besides serving as guides to University life, the Sons have been called upon to: pull a splinter from a toe, help light the charcoal in a grill on the Boaz patio, iron a shirt for a tennis player, lend tools and take a student with a split forehead to the emergency clinic.

The Sons say Boaz community activities often revolve around food – from “Son-day” night snacks, to weekly “family” dinners with students, to Korean BBQ night and cookouts on the new Boaz patio. With 184 residents, Boaz may be the smallest Residential Commons, but the Sons say it's one of the tightest-knit. To prove the point, Boaz students won the Commons Cup for 2017, 2018 and 2019 by attending SMU athletic events, participating in community service and competing in the Residential Commons Olympics.





Boaz has spoken! Top 3 Son-day Night Snacks are: 1) sopapilla cheesecake, 2) "slutty" (ahem) brownies, 3) fruit dip. It was a great year!

## A photograph showing a group of students and adults gathered around a long buffet table. Several large metal trays are filled with food, including fried chicken, green beans, and other dishes. People are using black serving tongs to serve themselves. The setting appears to be a school cafeteria or a community hall.



Proud of @SMU\_BoazRC for winning the intramurals b-ball championship! Had to take one of our guys to get stitches when he took a charge!



The Sons make appearances at campus competitions like Trivia Night and the Residential Commons Olympics to root for their students.



I feel like a proud parent.  
@SMU\_BoazRC RA Alec Bucshon is 2016  
Homecoming King! @SMU  
#SMUHomecoming



How I spent my Wed: Day: finished grant proposal Night: fantasy football draft with @SMU\_BoazRC @MoMacRC residents

Proj Total: 83  
 Line: +18.5  
 Top Scorer: B. Marshall 13  
 Top Scorer: B. Marshall 13

**6.5**  
**38**

**Team BoazHoez (Boaz)**  
 (1-0) francis ramus  
**Team Mucci-Ferris (MUCC)**  
 (0-1) Madison Mucci-Ferris

**QUICK BOX SCORE | FULL BOX SCORE | FANTASYCAST**

**QUICK BOX SCORE**  
 Boaz Yet to Play: 4  
 In Play: 6  
 Mins Left: 374  
 Proj Total: 133  
 Line: -9.9  
 Top Scorer: M. Wallace 18

**MUCC**  
 Yet to Play: 7  
 In Play: 3  
 Mins Left: 491  
 Proj Total: 100  
 Line: +9.9  
 Top Scorer: Havelle D/S/T 18

Adjust Score: 100  
**BOX SCORE**



*“Being a Faculty in Residence gives me a great opportunity to open my home to students so that we can **build unique relationships and create a vibrant social and intellectual community outside the classroom.** My best interactions and teachable moments came from spending time with students in informal settings. **Having lived on three continents,** both my husband and I **learned to appreciate different cultures and foods from around the world,** which I look forward to sharing with our students.”*



**Liljana Elverskog, Faculty in Residence,  
Mary Hay/Peyton/Shuttles Commons**  
Senior Lecturer of Arabic, Arabic Area Chair,  
Department of World Languages and Literatures  
Dedman College of Humanities and Sciences



# *Uncommon*

## EXPERIENCES



Before Opening Convocation, first-year students walk through the back doors of Dallas Hall, across the Rotunda and onto the Main Quad as new members of the SMU student body.

Residents gather with Paul B. Loyd, Jr. '68 at the Anita and Truman Arnold Dining Commons for a banquet inspired by the "High Table" tradition at Oxford, where faculty and students engage in intellectual exchanges over a formal dinner.



Residents of Ware Commons meet Richard Ware '68 during a pinning ceremony serving as their official welcome. Each Residential Commons not only has its own pinning ceremony, but also its own unique features – mottos, crests, special events and more.



SMU President R. Gerald Turner greets residents at a recent edition of Ware Commons Salon. The Salon is a popular tradition on Sunday nights that sparks friendships over delicious snacks.

# Space FOR LIVING

***The Residential Commons offer an array of academic and social programs to enhance your undergraduate experience.*** SMU is committed to maintaining a diverse learning environment shaped by a convergence of ideas and cultures. Our residents are encouraged to embrace new experiences, and our Residential Commons promote exposure to a multitude of cultures, perspectives and personal values. No matter which Commons you live in, you are assured of a truly transformative experience that will broaden your horizons and enhance your view of the world around you.

- All incoming first-year students are equally distributed among our 11 Residential Commons, making each Commons a smaller community that is a microcosm of the University.
- Although each Commons is architecturally distinctive, each room is furnished similarly – with a bed, desk, chair, dresser and closet space for each resident. Beds are extra-long, 80-inch twin-size.
- Bathrooms vary by building and typically are shared by four to eight students. Bathrooms in a community configuration are cleaned daily, and those in a suite configuration are cleaned weekly.
- Single rooms may be available to first-year students on a space-available basis. Students should indicate preference for a single room when applying for housing.
- Area service desks are located in Armstrong Commons and Virginia-Snider Commons. Area desks are resources for information, maintenance requests and lockouts.
- Dining plans are required of all students living in a Residential Commons.
- Dining centers located in Arnold Dining Commons and Umphrey Lee Center are open to all.
- SMU's Disability Accommodations and Success Strategies (DASS) office helps students with disabilities obtain appropriate accommodations. In order to establish eligibility, students must contact DASS. Learn more at [smu.edu/dass](https://smu.edu/dass).

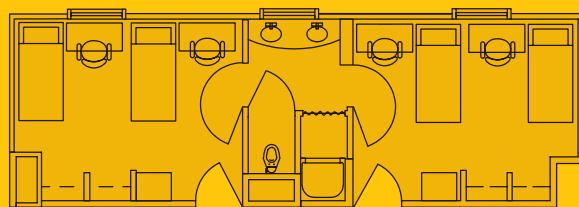


## FEATURES

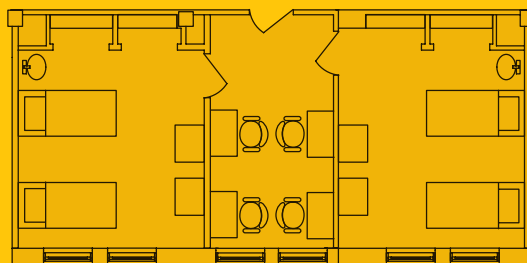
- ▶ Air conditioning
- ▶ Laundry facilities (at no additional charge)
- ▶ Community TV lounge
- ▶ Cable in student bedrooms
- ▶ Secure card-access entry at exterior doors
- ▶ Lounges, classrooms and common areas for study and socializing
- ▶ Microwaves in common areas, not in individual rooms
- ▶ Ethernet and wireless connections
- ▶ All residential facilities are smoke-free, as are all University buildings



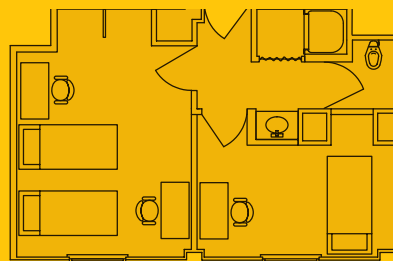
# TAKE A PEEK AT SOME *floor plans*



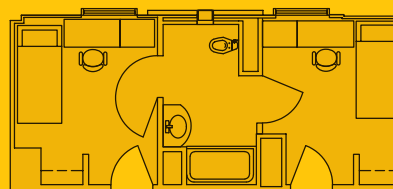
Double-occupancy rooms with bath  
Square footage: 185–250



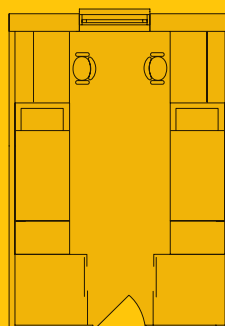
Double-occupancy rooms with common area  
Square footage: 182–193



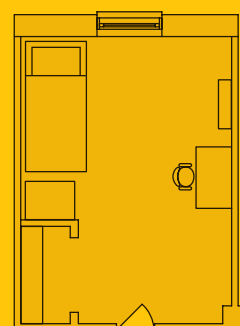
Double- and single-occupancy rooms with bath  
Square footage: 185–250



Single-occupancy rooms with bath  
Square footage: 80–120



Double-occupancy room  
Square footage: 196–243



Single-occupancy room  
Square footage: 90–160

# Dining

## WITH STYLE



***As part of the on-campus experience, all students living in a Residential Commons are required to have a dining plan membership.*** Memberships are designed to make your life easier and provide you with many convenient options. First- and second-year resident student dining plans provide seven-day, all-access dining in both Umphrey Lee Center and Arnold Dining Commons. New students are assigned a standard “The Works” dining plan, and can request a change during orientation in the summer.

Dining plans may be used in either Umphrey Lee (affectionately called “Umph”) or Arnold Dining Commons, regardless of where you live. With just a swipe of your SMU ID card, you will have access to the all-you-care-to-eat establishments. Whether you have a taste for international fare, fresh salads, brick oven pizza, freshly prepared pasta, made-to-order deli and omelet

stations or sweet treats from our in-house bakery, SMU Dining offers it all. The flexibility, late-night options at Mac’s Place and opportunities to socialize with friends are just some of the reasons SMU students love their dining memberships.

At SMU, we believe in making smart choices as part of an overall healthy lifestyle. SMU is at the forefront of empowering students to make healthy choices – free consultations are available with our registered and licensed dietician. SMU Dining’s award-winning “Healthy on the Hilltop” station, in Umphrey Lee Center, features complete vegan and made-without-gluten meals to assist you in nourishing your body with the essentials for good health. Our newest station, True Balance in Arnold Dining Commons, offers a complete meal made without seven of the top eight allergens.

# ON THE MENU

- ▶ Themed events include State Fair Night, Fry the Frogs BBQ, Feast of Thanks and many more!
- ▶ Award-winning chefs prepare fresh meals every day.
- ▶ Dallas' most popular food trucks visit campus every Tuesday and Thursday throughout the school year.

In addition to traditional residential dining, all plans include an add-on Flex Dollars option. The discounts associated with Flex Dollars vary by add-on amount – the more you add, the more you save! Flex Dollars can be used at all on-campus retail dining locations, including popular eateries such as Chick-fil-A, Starbucks (Fondren Library Center and Dedman Center for Lifetime Sports), Cinco Taco and Einstein Bros. Bagels. Flex Dollars are also welcome at all on-campus convenience stores, including The Market, a one-stop shop for everything from drinks and snacks to Steel City Pops, fresh sushi and even beauty and cleaning supplies.

Flex Dollars carry over from fall to spring term and expire at the end of each academic year. Students can add Flex Dollars and check their balance online at [mealplans.smu.edu](http://mealplans.smu.edu).



# Campus MAP



## HOUSING REQUIREMENT

Incoming first-year students are required to live on campus for their first two years at SMU. Although you will be guaranteed housing for two years, you must submit the housing application to be assigned to your Residential Commons.

### Want to live at home?

Exemptions may be granted to Dallas-area students who want to live at home with a parent or guardian on a hardship basis. You may request an exemption after you apply for housing. Exemption decisions are made by the dean of Residence Life and Student Housing.

## ASSIGNMENTS

Incoming first-year students are assigned to our Residential Commons. Every new student who pays the admission deposit by May 1 and submits the housing application is assigned to one of our 11 Commons. Assignments are made on a space-available basis, and specific Commons may not be requested. You'll be notified of your Commons assignment in June, prior to the new student orientation.

## HOW TO APPLY FOR HOUSING

Apply for housing after paying your Orientation, Housing and Matriculation deposit to the Office of Undergraduate Admission at [smu.edu/deposit](https://smu.edu/deposit).

Instructions will be emailed to you when the housing portal is open for your application, usually a week after you pay your deposit.

### Important steps

- 1 Log into the housing portal with your SMU ID and password. (Instructions will be emailed approximately a week after you pay your deposit.)
- 2 In the portal, enter your housing and roommate preferences, along with any disability requests related to housing.
- 3 Sign the housing agreement. (If you're under 18, you'll get a prompt for a co-signer on your housing agreement.)
- 4 Looking for a roommate? Use the Roommate Search tool in the housing portal to find, request and confirm a roommate. The deadline for roommate requests is June 1.
- 5 You'll receive an email confirmation when your housing application is complete!

## Make YOUR MOVE

Ready to make your home at SMU? Reserve your place in the Class of 2024 at [smu.edu/deposit](https://smu.edu/deposit). Then look for an email with instructions on how to complete the online housing application.



## SMU RESIDENCE LIFE & STUDENT HOUSING

[smu.edu/housing](https://smu.edu/housing)

[housing@smu.edu](mailto:housing@smu.edu)

214-768-2407

Fax 214-768-4005

World Changers  
Shaped Here



SMU



CONNECT WITH US!

